

Product list

Please note

This product list includes all parts necessary for most applications. For parts required for special applications, please refer to the MEVA price list. Dimensions are in centimetres (cm) unless a different unit is shown.

Contents

Adhesive tape, red.....	83	M column clamp.....	87
Articulated flange nut.....	89	M crane hook.....	90
Brace frame 250.....	91	M-Cross stiffener 44.....	85
Cantilever angle 100/125.....	99	M hinged inside corner.....	82
Combi-lock with coupling.....	85	M hinged outside corner.....	82
Corner angle 40/60.....	86	M inside corner.....	81
Counter plate.....	90	M outside corner 350.....	81
Coupling nut 20.....	89	M outside corner bracket.....	86
Crane slings 60.....	95	M panel 250/50 AL 20 with concreting window.....	77
Drive nut 60.....	89	M panel 250/50 AL 20 with filling nozzle.....	77
Extension ladder 210.....	96	M safety bolt.....	94
Flange nut 100.....	88	M timber profile.....	80
Flange screw.....	85	Plug D27/30.....	88
Folding access platform BKB 125.....	100	Safety cage.....	97
Formwork-prop connector.....	91	Scaffold tube.....	94
Foundation tape.....	76	Side railing.....	93
Guard-railing post.....	92	Spanner.....	89
Guard-railing post 48.....	93	Stop end bracket.....	86
Hexagonal nut 20.....	90	Stripping support.....	83
Ladder.....	95	Swivel-joint coupler 48/48.....	94
Ladder connector.....	96	Tensioner M for foundation tape.....	76
Ladder fixture 33/45.....	97	Tensioning screw M 350.....	79
Ladder fixture panel bottom.....	98	Tie rod DW.....	88
Ladder fixture panel top.....	98	Tie rod holder.....	88
Lifting hook 60.....	94	Tilting bracket 40/60.....	93
M 350 aluminium filler.....	80	Transport device M 24/160.....	99
M 350 column panel 350.....	78	Trolley for foundation tape.....	76
M 350 panel.....	72	Uni-assembly lock.....	84
M 350 stripping corner.....	83	Uni-tie claw.....	90
M alignment rail.....	87	Walkway bracket.....	92
M assembly lock.....	84		

M 350 panel

Construction height 12 cm, frame profile width 60 mm. Three tie holes per panel height 350 cm and 300 cm, two tie holes per panel height 250 cm. The frames of M 350-panels are made of closed steel profiles and are torsion-proof. M 350-panels are equipped with alkus facing. All-around grooves and M assembly locks guarantee a stepless, tight and perfectly aligned panel connection. Conical anchor sleeves are weld into the frames. Multi-function profiles allow for an easy, fast and safe attachment of accessories.

Ref.-No.	Description / Application	m ²	kg
23-005-05	M 350-panel AL 20 350/250	8.75	581.5
23-005-20	M 350-panel AL 20 350/125	4.38	260.0
23-005-30	M 350-panel AL 20 350/100	3.50	215.5
23-005-35	M 350-panel AL 20 350/ 75	2.63	174.0
23-005-45	M 350-panel AL 20 350/ 55	1.93	139.0
23-005-50	M 350-panel AL 20 350/ 50	1.75	131.0
23-005-55	M 350-panel AL 20 350/ 45	1.58	121.0
23-005-70	M 350-panel AL 20 350/ 30	1.05	93.2
23-005-75	M 350-panel AL 20 350/ 25	0.88	86.0

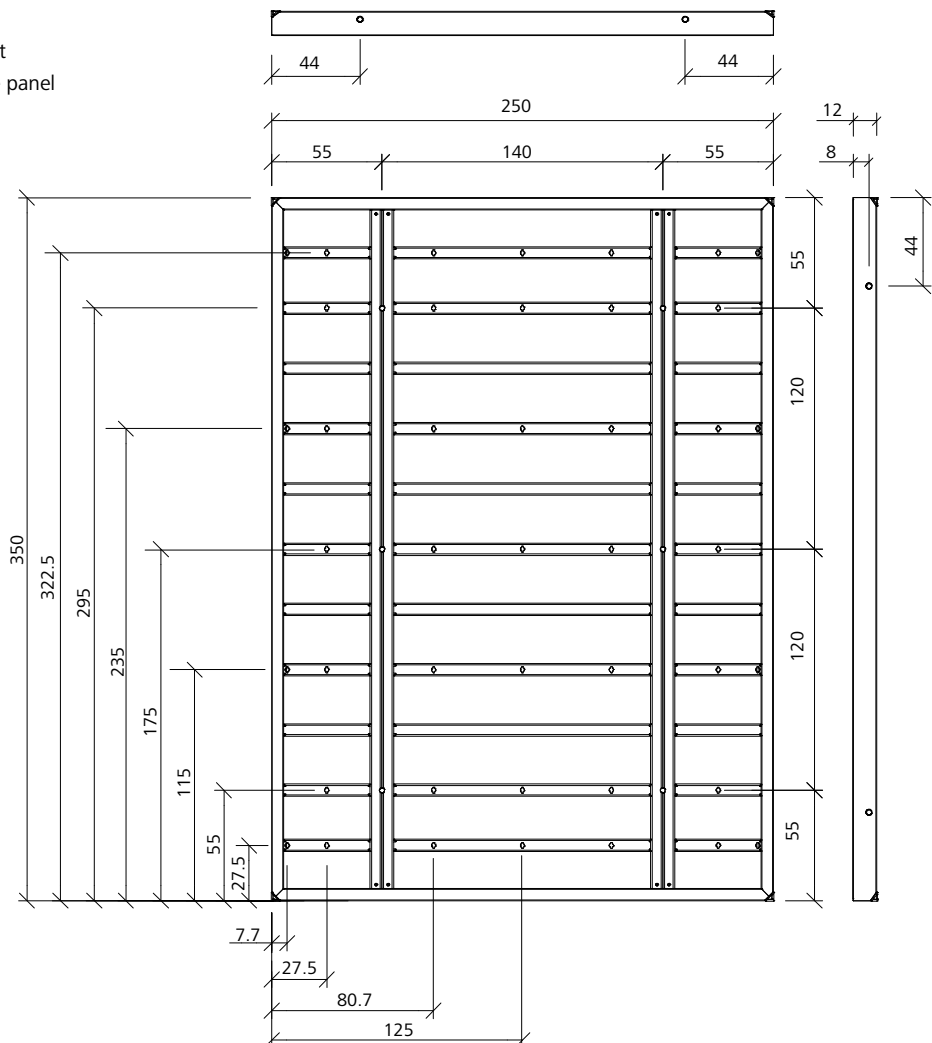
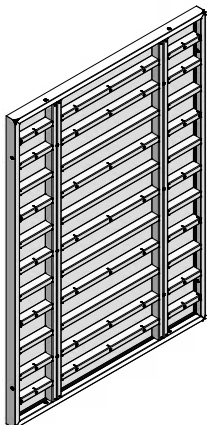
Panel height 350 cm

11 traverses of which 7 are multi-function profiles with welded-in nuts with Dywidag thread.

3 tie holes are located at multi-function profile level and ensure a continuous symmetry as well as an easy and correct assembly. The tie holes of the large-size panel 350/250 are located on the inside.

Attention

Tie holes that are not used must always be closed with plug D27/30.



Panel height 300 cm

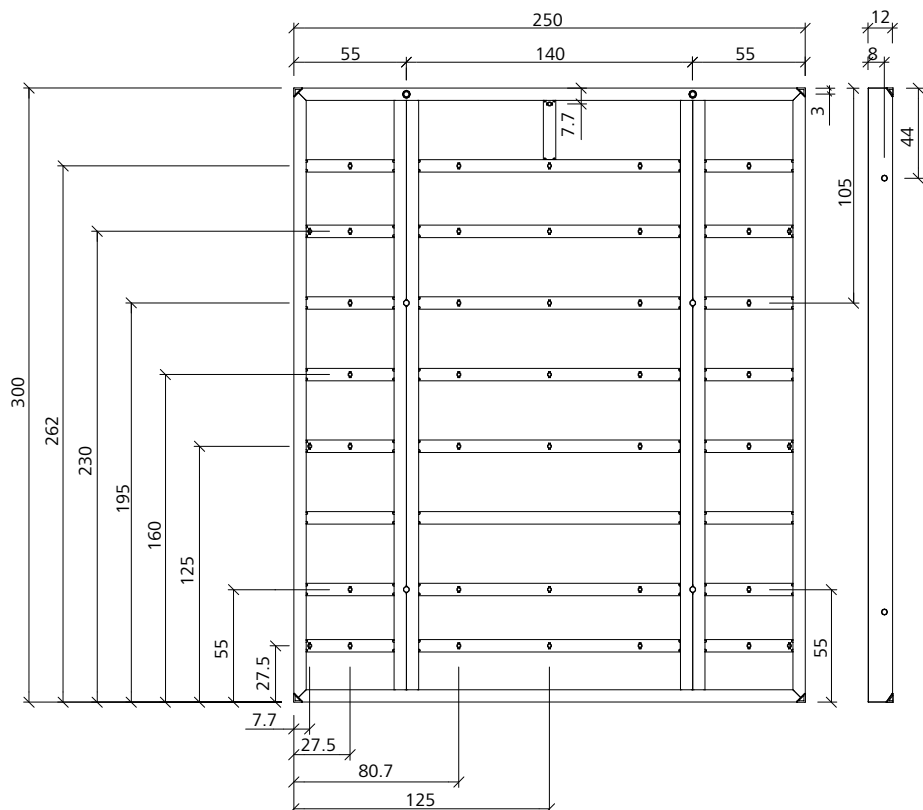
8 traverses of which 7 are multi-function profiles with welded-in nuts with Dywidag thread.

2 tie holes per panel height, with an additional tie hole at the top for panel extension. The tie holes of the large-size panel 300/250 are located on the inside.

Attention

Tie holes that are not used must always be closed with plug D27/30.

Ref.-No.	Description / Application	m ²	kg
23-006-05	M 350-panel AL 20 300/250	7.50	464.0
23-006-20	M 350-panel AL 20 300/125	3.75	205.0
23-006-30	M 350-panel AL 20 300/100	3.00	170.5
23-006-35	M 350-panel AL 20 300/ 75	2.25	138.5
23-006-45	M 350-panel AL 20 300/ 55	1.65	113.0
23-006-50	M 350-panel AL 20 300/ 50	1.50	106.5
23-006-55	M 350-panel AL 20 300/ 45	1.35	100.5
23-006-70	M 350-panel AL 20 300/ 30	0.90	81.5
23-006-75	M 350-panel AL 20 300/ 25	0.75	75.0



Wall formwork

Mammut 350

Panel height 250 cm

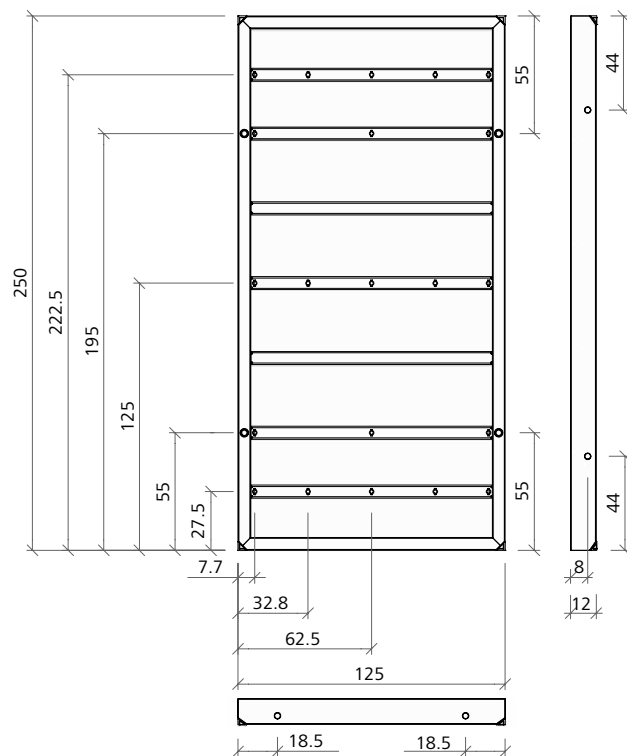
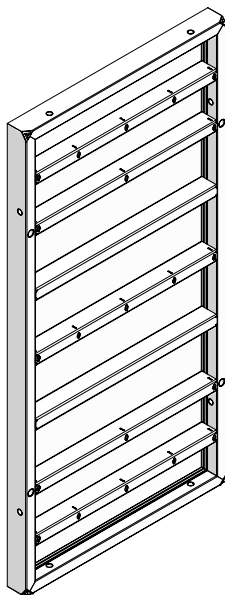
7 traverses of which 5 are multi-function profiles with welded-in nuts with Dywidag thread.

2 tie holes are located at multi-function profile level and ensure a continuous symmetry as well as an easy and correct assembly.

Attention

Tie holes that are not used must always be closed with plug D27/30.

Ref.-No.	Description / Application	m ²	kg
23-007-20	M 350-panel AL 20 250/125	3.13	184.0
23-007-30	M 350-panel AL 20 250/100	2.50	152.0
23-007-35	M 350-panel AL 20 250/ 75	1.88	123.0
23-007-45	M 350-panel AL 20 250/ 55	1.38	99.0
23-007-50	M 350-panel AL 20 250/ 50	1.25	93.0
23-007-55	M 350-panel AL 20 250/ 45	1.13	87.5
23-007-70	M 350-panel AL 20 250/ 30	0.75	67.5
23-007-75	M 350-panel AL 20 250/ 25	0.63	63.0



Panel height 125 cm

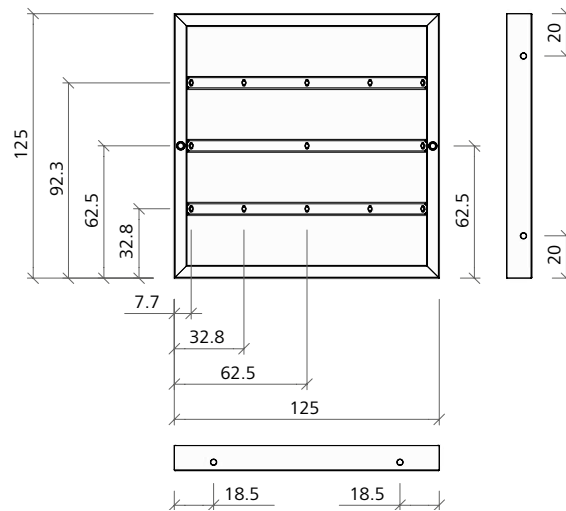
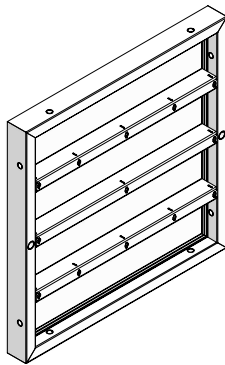
3 traverses which are all multi-function profiles with welded-in nuts with Dywidag thread.

1 tie hole is located at multi-function profile level and ensures a continuous symmetry as well as an easy and correct assembly.

Attention

Tie holes that are not used must always be closed with plug D27/30.

Ref.-No.	Description / Application	m ²	kg
23-008-20	M 350-panel AL 20 125/125	1.56	98.0
23-008-30	M 350-panel AL 20 125/100	1.25	81.0
23-008-35	M 350-panel AL 20 125/ 75	0.94	65.0
23-008-45	M 350-panel AL 20 125/ 55	0.69	52.0
23-008-50	M 350-panel AL 20 125/ 50	0.63	49.0
23-008-55	M 350-panel AL 20 125/ 45	0.56	45.5
23-008-70	M 350-panel AL 20 125/ 30	0.38	36.5
23-008-75	M 350-panel AL 20 125/ 25	0.31	33.5

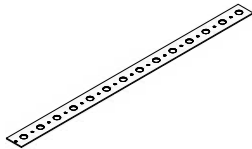


Wall formwork

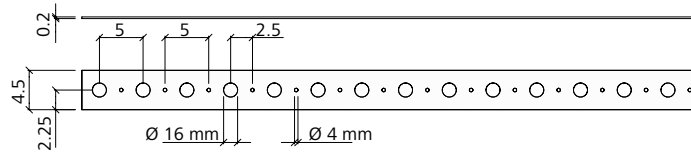
Mammut 350

Foundation tape

Galvanized. Hole spacing 50 mm, hole Øx16 mm, 50 m long. Admissible tractive force 10 kN. To be cut at hole center. Serves together with the appropriate tensioner as a bottom anchoring when panels are assembled in horizontal position.

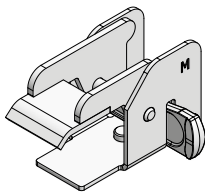


Ref.-No.	Description / Application	m ²	kg
29-307-50 Foundation tape 50 m.....		20.0

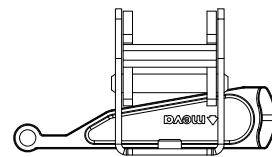
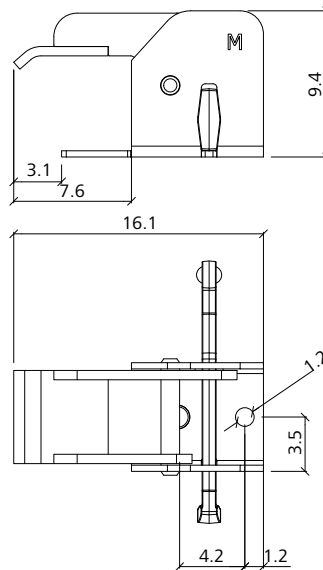


Tensioner M for foundation tape

Galvanized. Used to connect the foundation tape to the Mammut panels. Two tensioners required per anchoring position.



Ref.-No.	Description / Application	m ²	kg
29-307-60 Tensioner M for foundation tape.....		1.5



Trolley for foundation tape

Not shown. Galvanized. Is used to transport and cut foundation tape to length. Suitable for one roll. Pneumatic wheels.

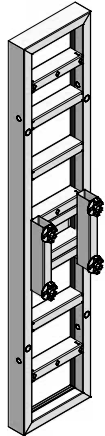
Ref.-No.	Description / Application	m ²	kg
29-307-55 Trolley for foundation tape.....		21.8

Wall formwork

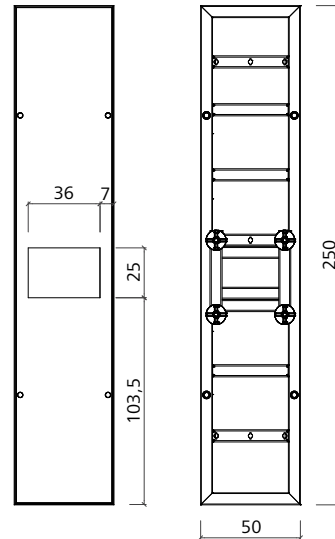
Mammut 350

M panel 250/50 AL 20 with concreting window

Is used to control the con-cret-ing process when pouring and control is not possible from above.

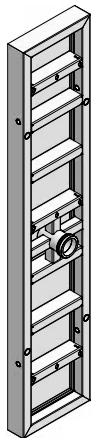


Ref.-No.	Description / Application	m ²	kg
23-121-10.....	M-panel 250/50 with concreting window	1.25	106.5

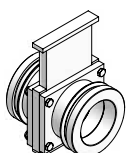
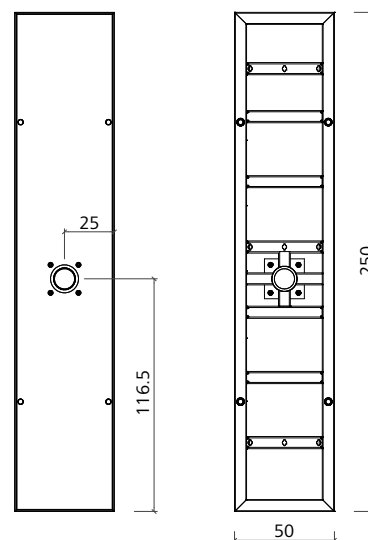


M panel 250/50 AL 20 with filling nozzle

Is used when concrete can-not be poured from above, e.g. tunnel formwork. Connection with a manual gate valve. Operating pressure: 20 bar.



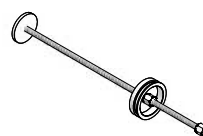
Ref.-No.	Description / Application	m ²	kg
23-121-05	M-panel 250/50 AL with filling nozzle	1.25	98.5
29-914-50	Manual gate valve SK 100 - 4½		19.0
29-207-60	Lever coupling SK-H DN 100 - 4½		3.8
29-207-50	Filling nozzle cleaner SK 100/800		7.2
62-031-55	Sealing washer A SK 100 - 4½		0.1



Manual gate valve SK



Lever coupling SK-H



Filling nozzle cleaner SK

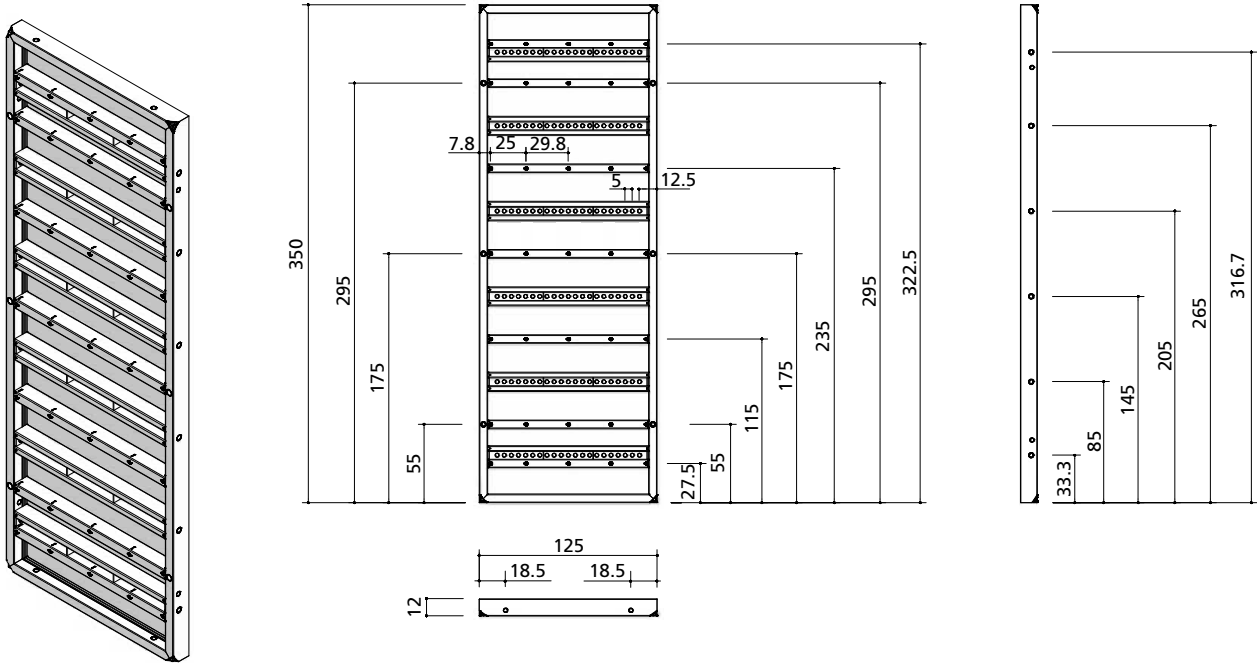
Wall formwork

Mammut 350

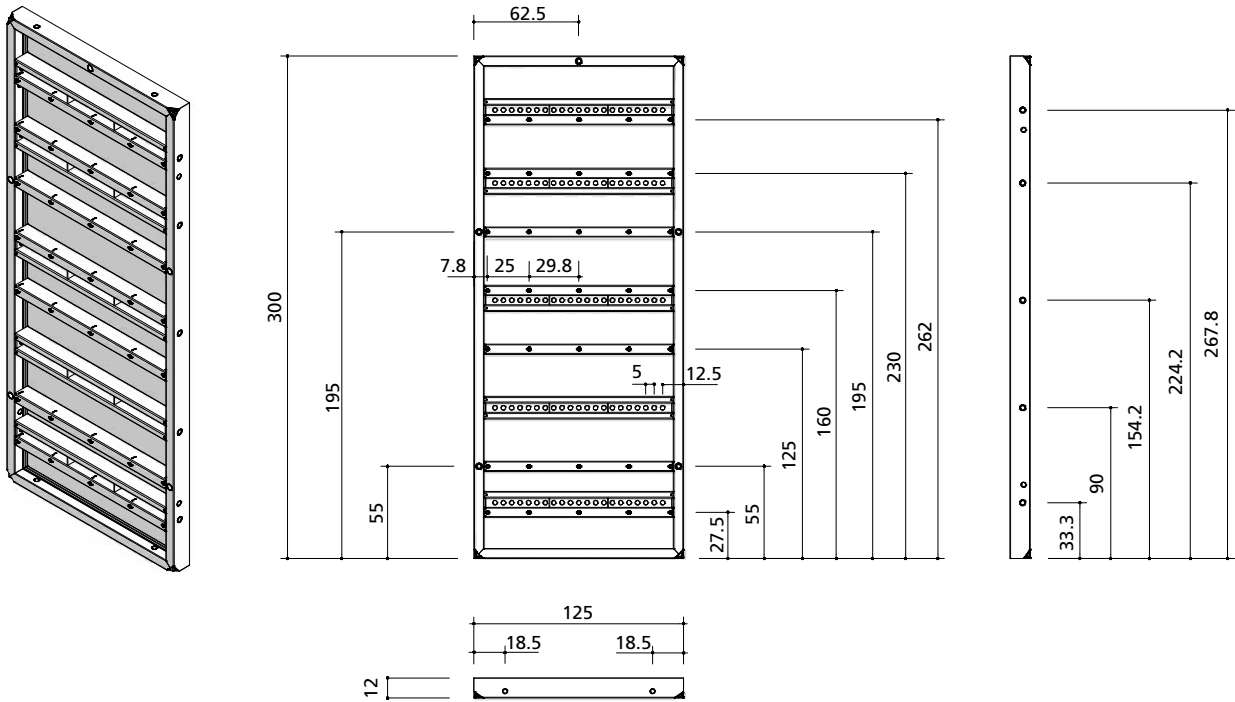
M 350 column panel

Colour RAL 3020. With alkus facing and perforated profile for tensioning screws M 350. Can be used to pour columns up to 100 cm wide, pilasters and connections to existing walls. Also usable with hinged corners etc.

Ref.-No.	Description / Application	m ²	kg
23-005-96	M 350-column panel 350 x 125 AL	4.38	325.5



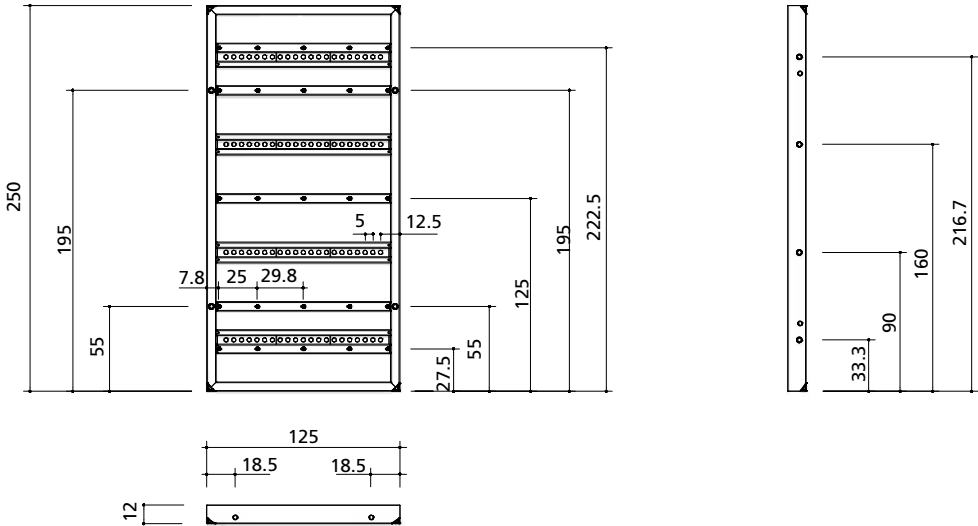
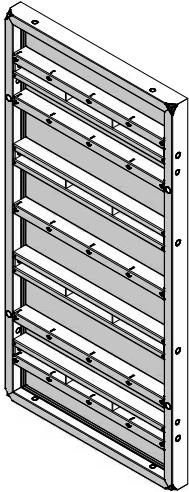
Ref.-No.	Description / Application	m ²	kg
23-006-96	M 350-column panel 300 x 125 AL	3.75	270.0



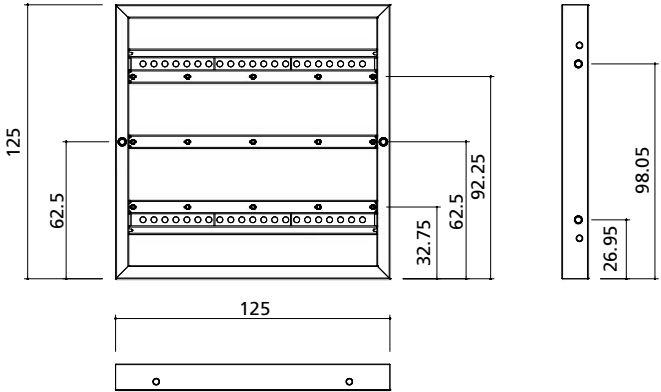
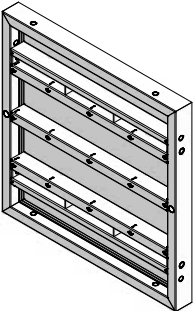
Wall formwork

Mammut 350

Ref.-No.	Description / Application	m ²	kg
23-007-96	M 350-column panel 250 x 125 AL	3.13	227.0



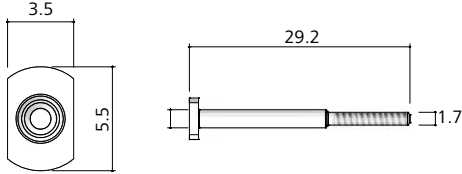
Ref.-No.	Description / Application	m ²	kg
23-008-96	M 350-column panel 125 x 125 AL	1.56	120.2



Tensioning screw M 350

Galvanized. Connects M 350 column panels. A flange nut 100 or an articulated flange nut 15/120 is also required.

Ref.-No.	Description / Application	m ²	kg
29-402-97	Tensioning screw M 350		1.0

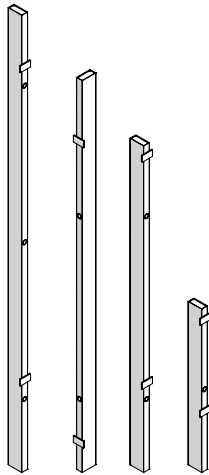


Wall formwork

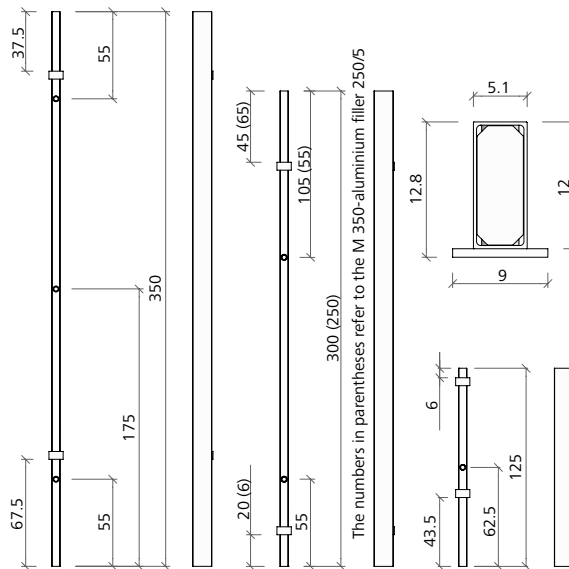
Mammut 350

M 350 aluminium filler

Aluminium with high-quality annealed powder coating. Tie holes. For length adjustments of 5 cm, particularly in corners. 2 or 3 Uni-assembly locks are required on each filler.

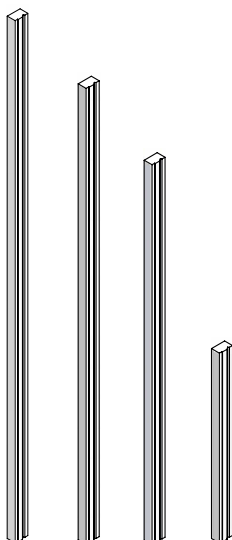


Ref.-No.	Description / Application	m ²	kg
29-300-30	M 350-aluminium filler 350/5	0.18	10.3
29-300-32	M 350-aluminium filler 300/5	0.15	8.8
29-300-35	M 350-aluminium filler 250/5	0.13	7.4
29-300-40	M 350-aluminium filler 125/5	0.06	3.9

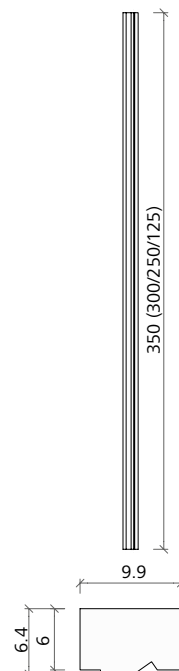


M timber profile

Timber profile with groove. To support job-built fillers of 17 cm or more, or to connect job-built formwork with a 21 mm facing; is attached to standard M 350-panels with 2 or 3 M-assembly locks. Delivery and weight by pairs.



Ref.-No.	Description / Application	m ²	kg
29-400-02	M 350-timber profile 350/21	0.74	10.1
29-400-05	M timber profile 300/21	0.63	8.7
29-400-15	M timber profile 250/21	0.53	7.3
29-400-17	M timber profile 125/21	0.26w	3.6



The numbers in parentheses refer to the M timber profile 300, 250, 125

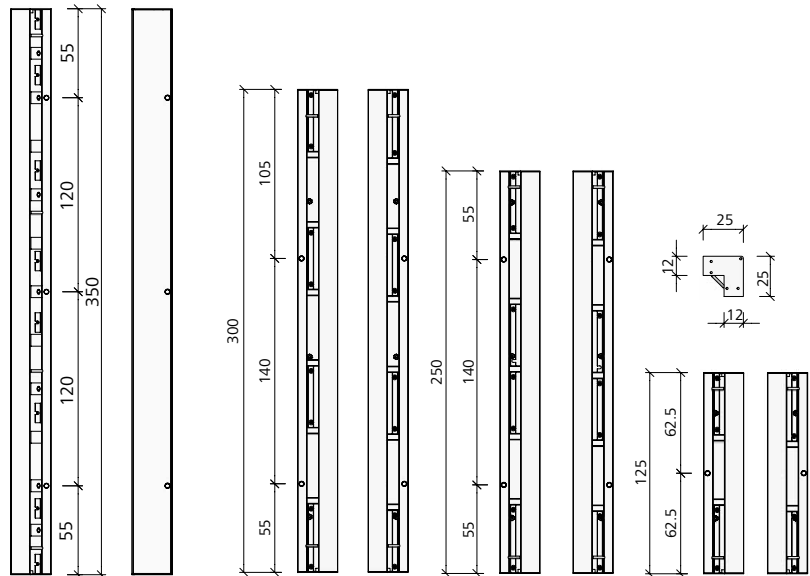
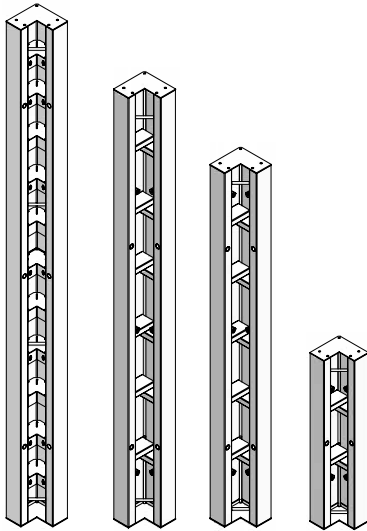
Wall formwork

Mammut 350

M inside corner

For 90° corners. Side length 25 cm. Steel frame with tie holes and alkus facing or replaceable steel face.

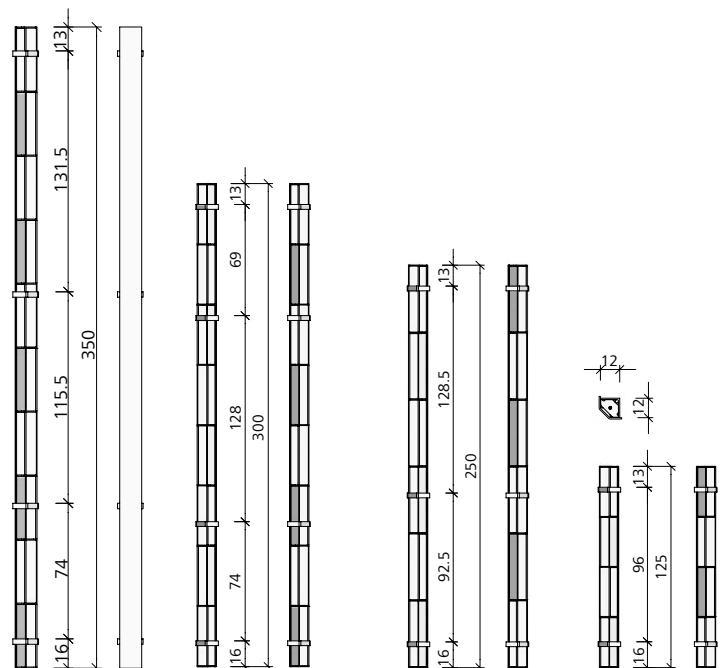
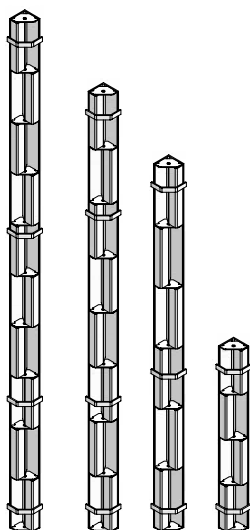
Ref.-No.	Description / Application	m ²	kg
23-136-40	M 350-inside corner 350/25 AL 20	1.75	120.5
23-136-50	M 350-inside corner 300/25 AL 20	1.50	91.5
23-136-60	M 350-inside corner 250/25 AL 20	1.25	85.5
23-136-70	M 350-inside corner 125/25 AL 20	0.63	44.0



M outside corner 350

Steel construction, galvanized. Provides together with M 350 panels and M assembly locks a tight and fast outside corner solution for 90° corners.

Ref.-No.	Description / Application	m ²	kg
23-140-30	M 350 Outside corner 350	78.0	
23-140-00	M-outside corner 300	66.6	
23-140-10	M-outside corner 250	55.2	
23-140-20	M-outside corner 125	28.5	

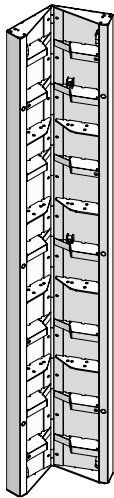


Wall formwork

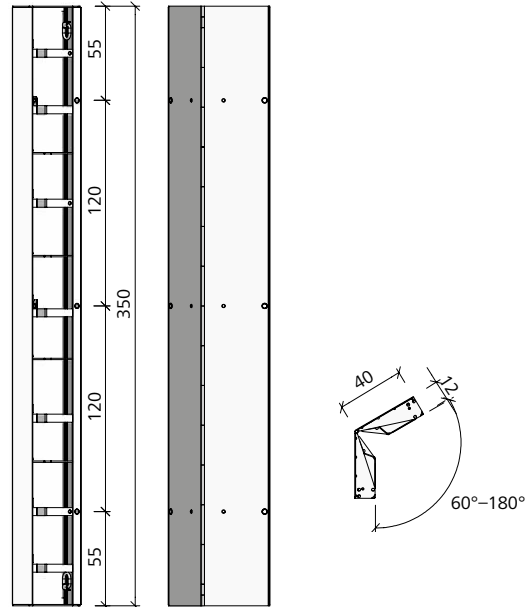
Mammut 350

M hinged inside corner

Steel construction with steel sheeting.
 Primed and cavity-sealed. Side length 40 cm.
 Adjustable angle 60°–180°.



Ref.-No.	Description / Application	m ²	kg
23-137-30	M 350-hinged inside corner 350/40	2.73	235.0
23-137-31	M-hinged inside corner 300/40	2.40	197.7
23-137-41	M-hinged inside corner 250/40	2.00	166.0
23-137-51	M-hinged inside corner 125/40	1.00	85.5

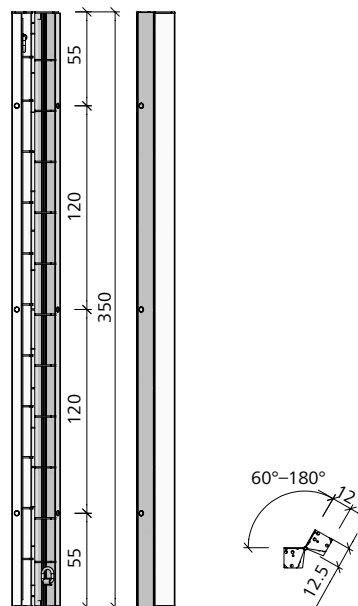


M hinged outside corner

Steel construction with steel sheeting. Primed
 and cavity-sealed. Side length 12.5 cm.
 Adjustable angle 60°–180°.

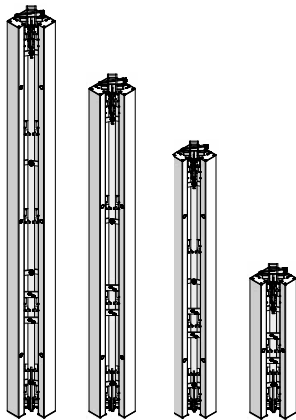


Ref.-No.	Description / Application	m ²	kg
23-137-70	M 350-hinged outside corner 350/12.5	0.88	114.6
23-137-71	M-hinged outside corner 300/12.5	0.76	97.3
23-137-81	M-hinged outside corner 250/12.5	0.62	81.6
23-137-91	M-hinged outside corner 125/12.5	0.32	42.0

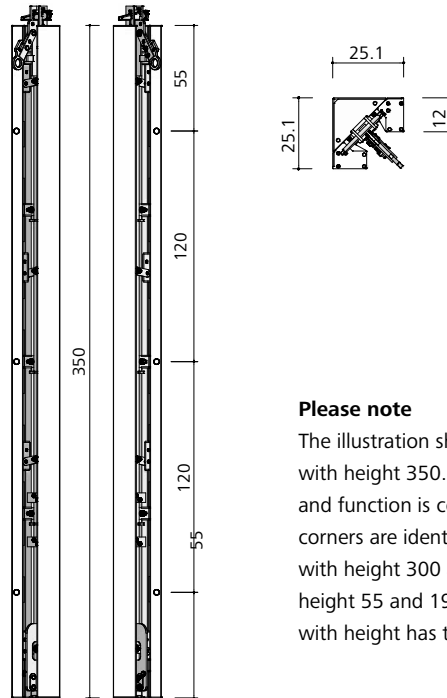


M 350 stripping corner

Steel construction with steel sheeting. Side length 25 cm. With tie holes. When the bell-crank lever is pushed upwards with a crowbar, the corner is removed 17.5 mm away from the concrete and the formwork 35 mm away from the concrete on both sides.



Ref.-No.	Description / Application	m ²	kg
23-151-00	M 350 stripping corner 350/25	1.75	189.7
23-151-10	M 350 stripping corner 300/25	1.50	162.8
23-151-20	M 350 stripping corner 250/25	1.25	141.1
23-151-30	M 350 stripping corner 125/25	0.63	80.3



Please note

The illustration shows the stripping corner with height 350. As far as their construction and function is concerned, all stripping corners are identical. The stripping corners with height 300 and 250 have tie holes at height 55 and 195 while the stripping corner with height has tie holes at height 62.5 only.

Adhesive tape, red

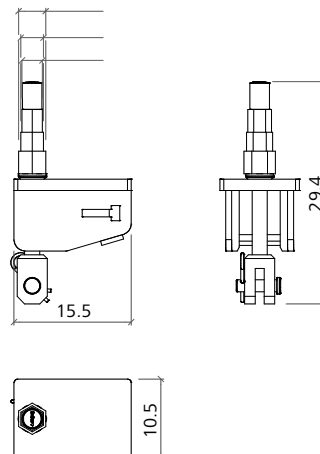
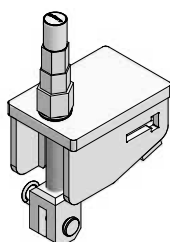
Not shown here. Reinforced adhesive tape, red, 50 mm wide, 50 running metres. Total thickness: 270 µm. Natural rubber adhesive on one side. PE-coated.

Ref.-No.	Description / Application	m ²	kg
41-912-10	Adhesive tape 50 m, red	0.8	

Stripping support

The stripping support is used to easily activate the stripping corner from above. Use a power screwdriver, a ratchet wrench or a spanner to activate the stripping support. The tools must have spanner width (SW) 27 or 30 or 36.

Ref.-No.	Description / Application	m ²	kg
29-306-30	Stripping support	5.0	

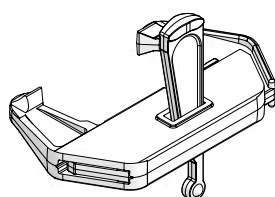


Wall formwork

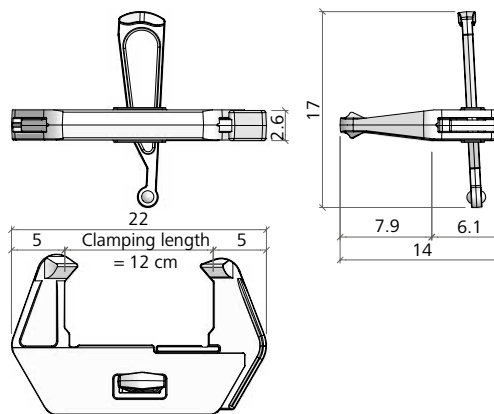
Mammut 350

M assembly lock

Galvanized. Tightly connects and aligns Mammut panels. Clamping length 12 cm. Two M assembly locks are required per panel joint for a panel height up to 300 cm and 3 locks required for a panel height of 350 cm.

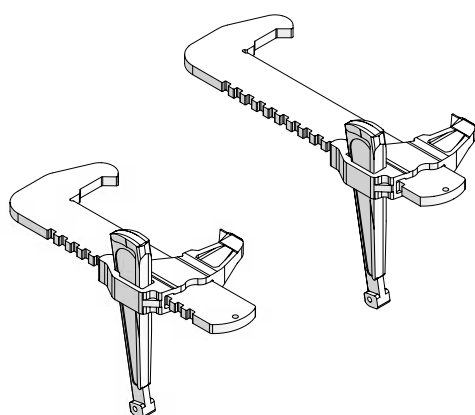


Ref.-No.	Description / Application	m ²	kg
29-400-71	M-assembly lock		3.0

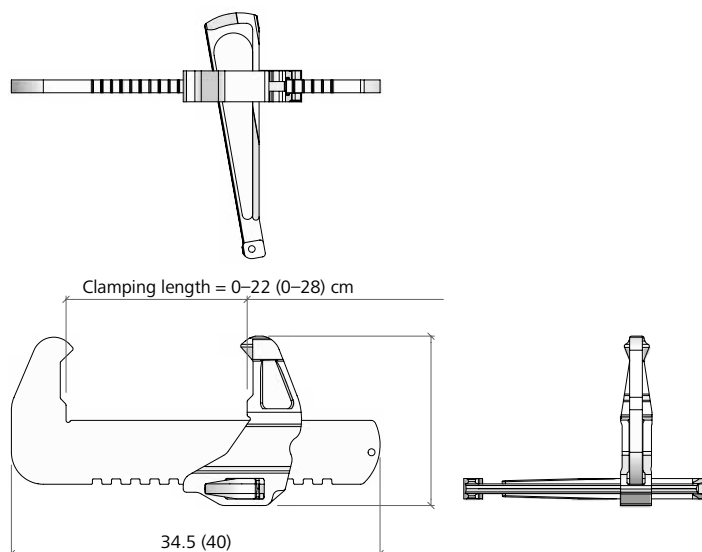


Uni-assembly lock

Galvanized. For stepless compensation. Clamping length 22 or 28 cm.



Ref.-No.	Description / Application	m ²	kg
29-400-85	Uni-assembly lock 22		3.6
29-400-90	Uni-assembly lock 28		3.9

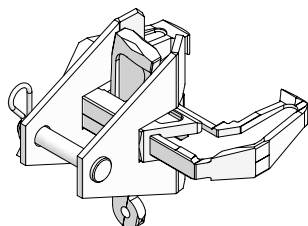


Wall formwork

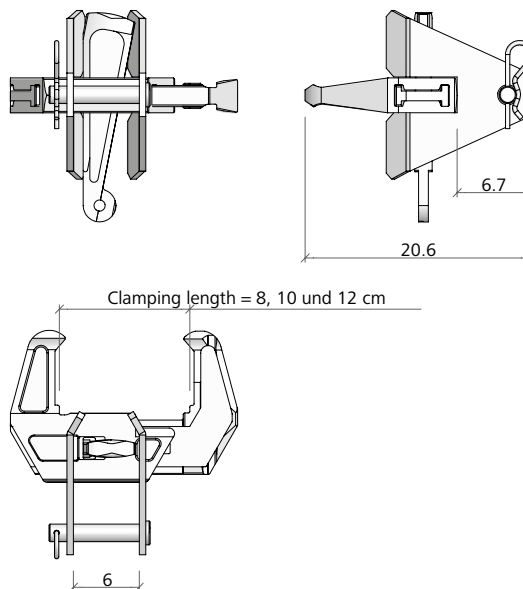
Mammut 350

Combi-lock with coupling

Galvanized. Is used to attach the push-pull props at the panel joint of the wall formwork profile widths of 40 and 60 mm. Clamping length 8, 10 and 12 cm.

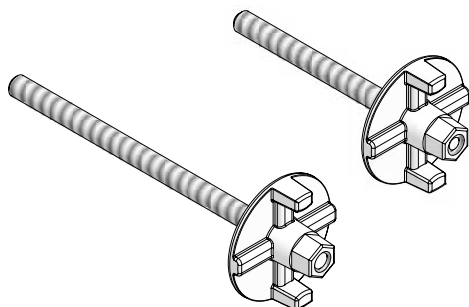


Ref.-No.	Description / Application	m ²	kg
29-804-60 Combi-lock with coupling		3.7

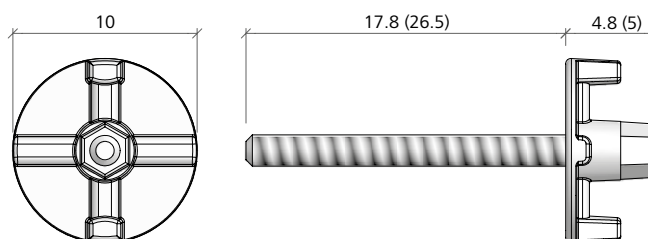


Flange screw

Galvanized. Is used to attach accessories, e.g. alignment rails, brace frames, push-pull props, etc. Length of thread 18 cm or 27 cm.



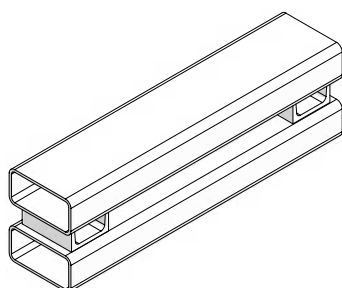
Ref.-No.	Description / Application	m ²	kg
29-401-10 Flange screw 18		1.1
29-401-12 Flange screw 28		1.2



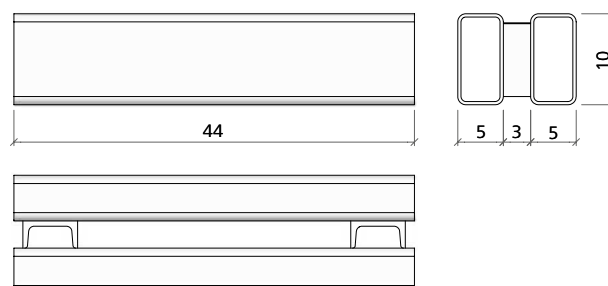
The numbers in parentheses refer to the Flange screw 28

M-Cross stiffener 44

Galvanized. Short alignment rail that braces panel joints for crane ganging and to reinforces filler areas.



Ref.-No.	Description / Application	m ²	kg
29-401-02 M-Cross stiffener 44		6.3

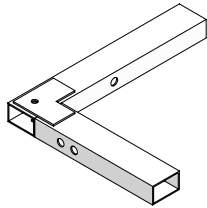


Wall formwork

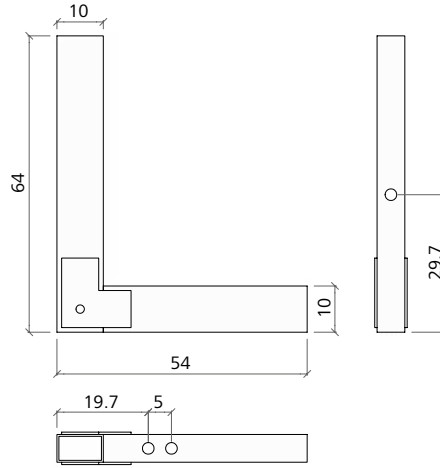
Mammut 350

M outside corner bracket

Galvanized. Provides together with M panels and flange screws 18 a tight outside corner assembly. Primarily used for concreting heights over 425 cm.

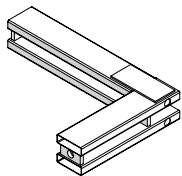


Ref.-No.	Description / Application	m ²	kg
23-137-63	M-outside corner bracket, galv.		12.0

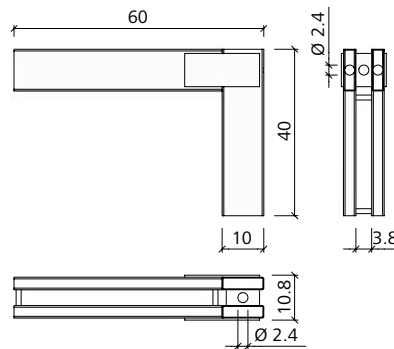


Corner angle 40/60

Galvanized. Side lengths 40 and 60 cm. For inside and outside corner.

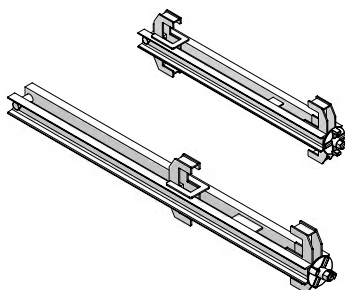


Ref.-No.	Description / Application	m ²	kg
29-402-25	Corner angle 40/60		9.5

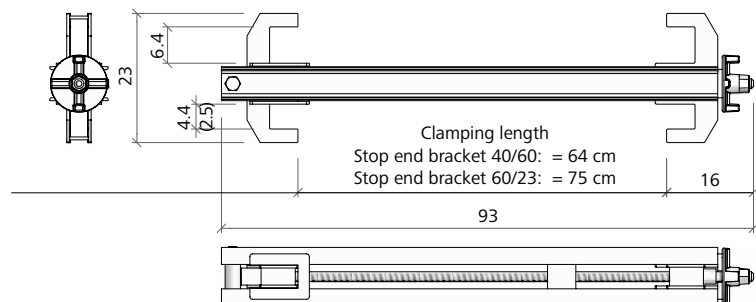


Stop end bracket

Galvanized. Is used to form stop ends. Stop end bracket 40/60 for wall thickness up to 40 cm and profile widths of 40 and 60 mm. Stop end bracket 2.5' - 60/23 for wall thickness up 75 cm (2.5') and profile widths of 23 mm (EcoAs) and 60 mm.



Ref.-No.	Description / Application	m ²	kg
29-105-50	Stop end bracket 40/60		15.4
29-105-60	Stop end bracket 2.5' - 60/23		20.0

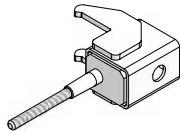


Wall formwork

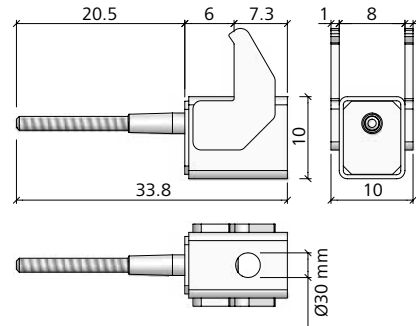
Mammut 350

M column clamp

Galvanized. Is used to attach alignment rails to panels when forming stop ends. Suited for 60 mm frame profiles. A flange nut 100 or an articulated flange nut 15/120 is also required. The column clamp is attached to the multi-function profile with a flange screw 18.



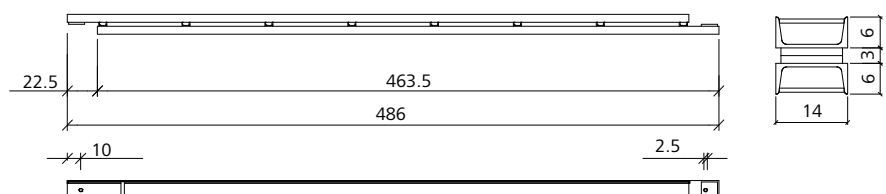
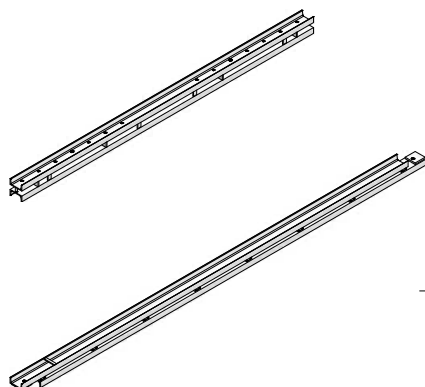
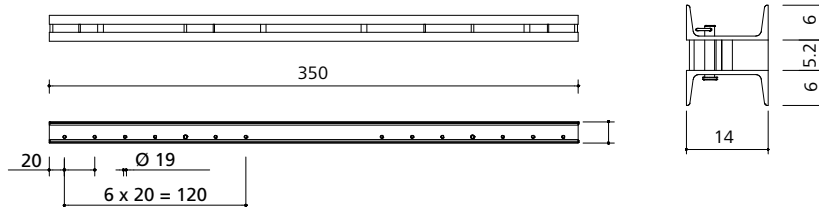
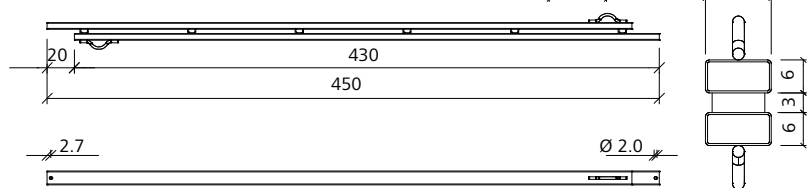
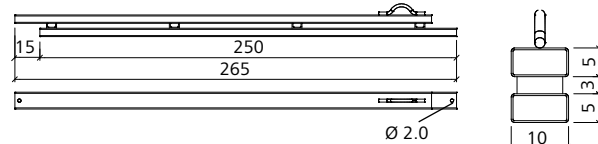
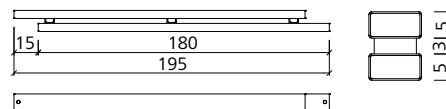
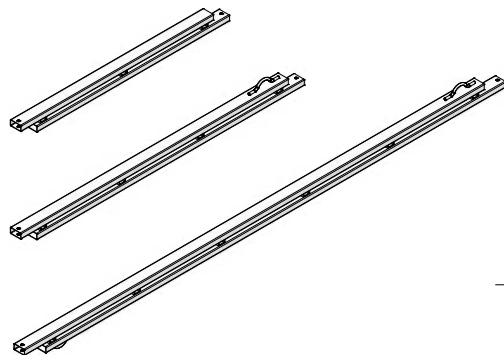
Ref.-No.	Description / Application	m ²	kg
29-402-70 Column clamp 21, galv.....	4.0	
29-402-75 Column clamp 27, yellow chromated	4.0	



M alignment rail

Galvanized. Are used to brace panel joints for crane ganging, bridge problem areas, brace compensation areas and build stop ends with stop end fixtures. Are attached to the formwork with flange screws.

Ref.-No.	Description / Application	m ²	kg
29-400-92 M-alignment rail 180, galv.....	24.8	
29-402-50 M-alignment rail 250, galv.....	34.5	
29-402-45 M-alignment rail 350, reinforced	124.0	
29-402-40 M-alignment rail 450.....	84.0	
29-402-38 M-alignment rail 450, reinforced	159.0	



Wall formwork

Mammut 350

Plug D27/30

Closes unused Mammut/Mammut 350/ Mammut XT-tie holes.

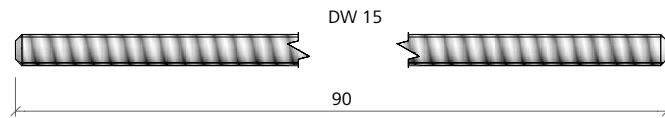


Ref.-No.	Description / Application	m ²	kg
29-902-61 Plug D27/30		0.1
29-902-67 Plug D27/30 without imprint		0.2
29-902-68 Plug D27 without imprint, flat		0.1

Tie rod DW

Uncoated, not weldable; DIN 18216; with DW thread; admissible load capacity 90 kN (Ø 15 mm) or 160 kN (Ø 20 mm); is used to tie panels of a double-sided formwork.

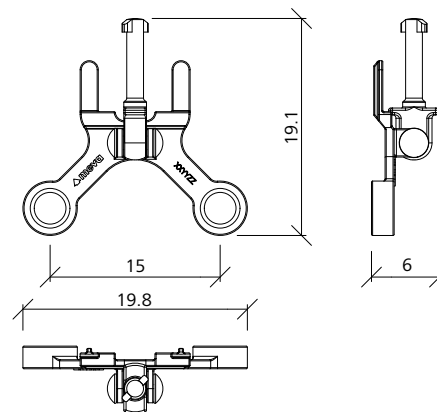
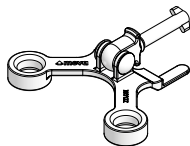
Ref.-No.	Description / Application	m ²	kg
29-900-80 Tie rod DW 15/90		1.3
29-900-97 Tie rod DW 20/120		3.0



Tie rod holder

Galvanised. To hold DW tie rods with articulated flange nut, XT tie rods or XT taper ties. Can be used with horizontal or vertical MEVA wall formwork panels.

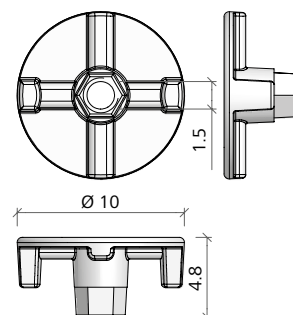
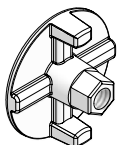
Ref.-No.	Description / Application	m ²	kg
29-927-10 Tie rod holder		1.1



Flange nut 100

Forged, galvanized. DIN 18216. DW thread Ø 15 mm, plate Ø 100 mm, SW 27 mm. Admissible load capacity 90 kN.

Ref.-No.	Description / Application	m ²	kg
29-900-20 Flange nut 100 (SW 27, forged)		0.7

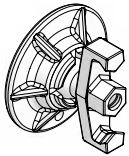


Wall formwork

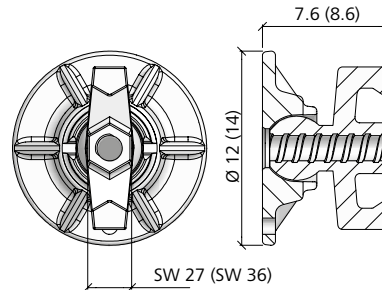
Mammut 350

Articulated flange nut

Forged, galvanized. DIN 18216. DW thread \varnothing 15 or 20 mm, plate \varnothing 120 or 140 mm, max. inclination 10° , SW 27 or 36 mm. Adm. load capacity 90 or 160 kN.



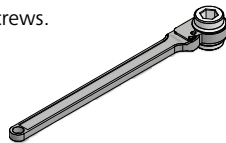
Ref.-No.	Description / Application	m ²	kg
29-900-10	Articulated flange nut 15/120 (SW 27)	1.8	
29-900-05	Articulated flange nut 20/140	2.4	



The numbers in parentheses refer to the Articulated flange nut 20/140

Spanner

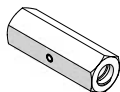
Inset yellow chromated. Spanner width (SW) 27 or 36 mm. To tighten and loosen flange nuts 100, articulated flange nuts 15/120 (or 20/140 with SW 36) und flange screws.



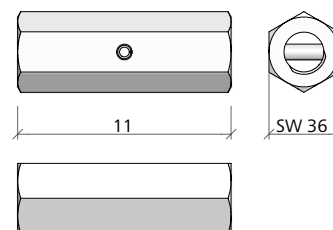
Ref.-No.	Description / Application	m ²	kg
29-800-10	Spanner SW 27	1.8	
29-800-15	Spanner SW 36	3.3	

Coupling nut 20

With DW thread, DIN 18216. Is used to connect tie rods to the anchor loop when length extension is necessary. \varnothing 20 mm, SW 36. Adm. load capacity 160 kN.



Ref.-No.	Description / Application	m ²	kg
29-900-50	Coupling nut 20	0.7	

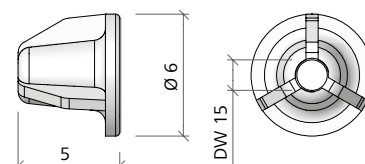


Drive nut 60

Galvanized. DW thread \varnothing 15 mm, plate \varnothing 60 mm. Adm. load capacity 90 kN (DIN 18216). Is used to tie the formwork to the ground or to a wall connection.



Ref.-No.	Description / Application	m ²	kg
29-900-23	Drive nut 60	0.5	

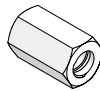


Wall formwork

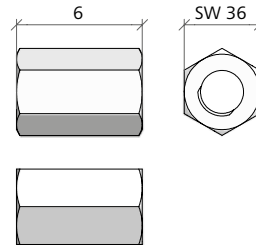
Mammut 350

Hexagonal nut 20

Forged, with DW thread, DIN 18216. To tie the anchors in the bottom slab and at the support frame together with a counter plate. Ø 20 mm, SW 36 mm, admissible load capacity 160 kN.

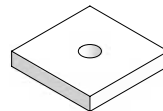


Ref.-No.	Description / Application	m ²	kg
29-900-61	Hexagonal nut 20 (SW 36)	0.5	



Counter plate

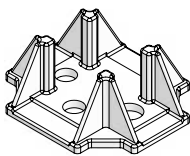
Galvanized. Is required to anchor the support frame together with the appropriate hexagonal nut. Hole Ø 25 mm.



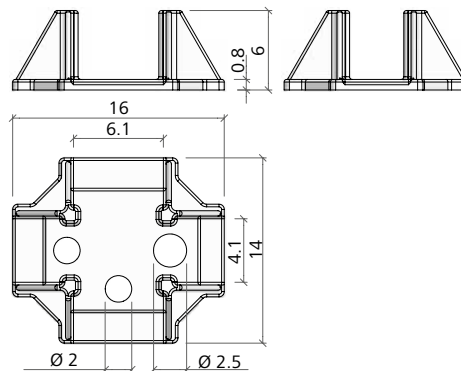
Ref.-No.	Description / Application	m ²	kg
29-900-35	Counter plate 120 x 120 x 20/25, galv.	2.1	

Uni-tie claw

Galvanized. Permits tying directly above or beside the panels. Is suited for panels with profile widths of 40 and 60 mm.

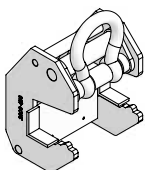


Ref.-No.	Description / Application	m ²	kg
29-901-41	Uni-tie claw	1.5	

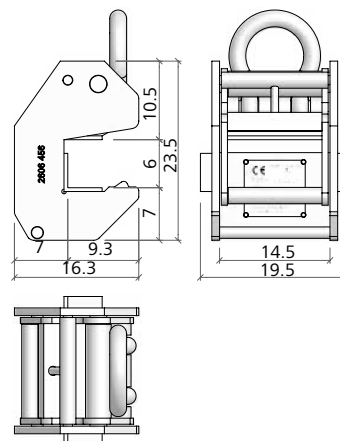


M crane hook

To move panels. Self-locking; load capacity 15 kN (1.5 tons). Always 2 crane hooks required per gang. Please refer to the crane hook Operating Instructions for application and safety test.



Ref.-No.	Description / Application	m ²	kg
29-401-21	M-crane hook	9.6	

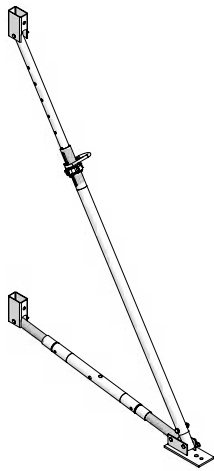


Wall formwork

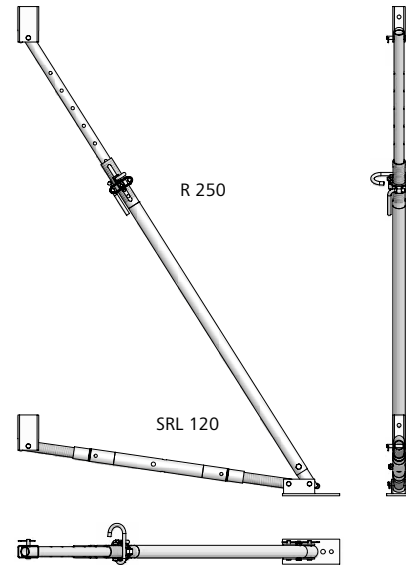
Mammut 350

Brace frame 250

Galvanized. Available with formwork-prop connector. Is used to align and brace the formwork. Consists of a push-pull prop R 250 (190–320 cm), a brace SRL 120 (90–150 cm) and a double-jointed footplate. The formwork-prop connectors are attached to the formwork with flange screws 18.

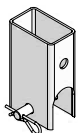


Ref.-No.	Description / Application	m ²	kg
29-109-20 Brace frame 250 with formwork-prop connector.....		31.5

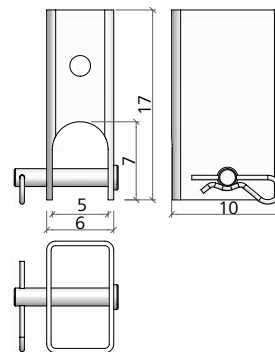


Formwork-prop connector

Galvanized. Connects braces, brace frames and push-pull props (max. Ø 48 mm) to the multi-function profile with flange screw 18. Delivery includes head bolt 16/90 and cotter pin 4.



Ref.-No.	Description / Application	m ²	kg
29-804-85 Formwork-prop connector		1.7

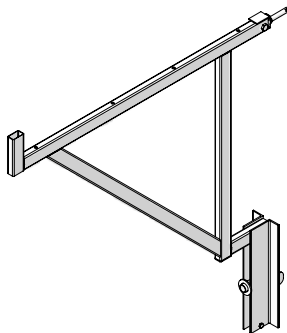


Wall formwork

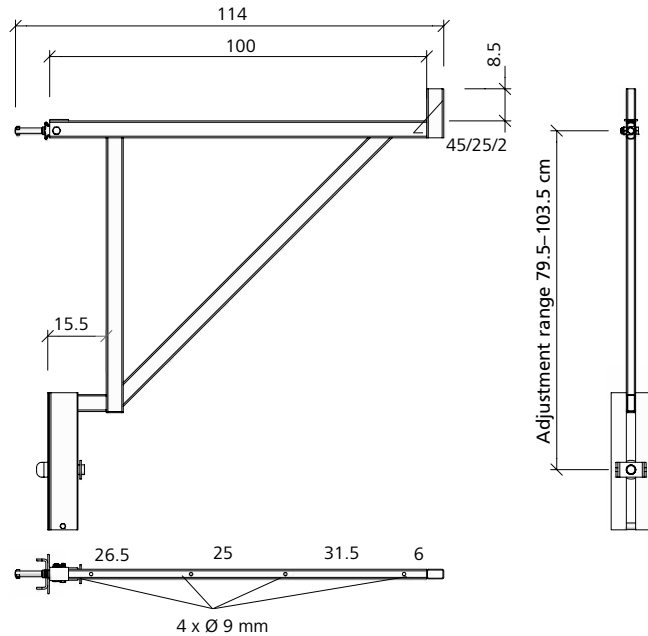
Mammut 350

Walkway bracket

Galvanized, yellow, pluggable. Is used as working and safety scaffold. Is attached to the multi-function profile and secured to the multi-function profile below with a flange screw 18. The planking can be mounted to the brackets. Working width approx. 90 or 125 cm. MEVA Guard-railing post is also required. Bracket spacing depends on type of planking (DIN 4420).

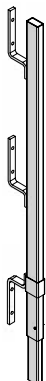


Ref.-No.	Description / Application	m ²	kg
29-106-00	Walkway bracket 90 (yellow), galv.		10.3

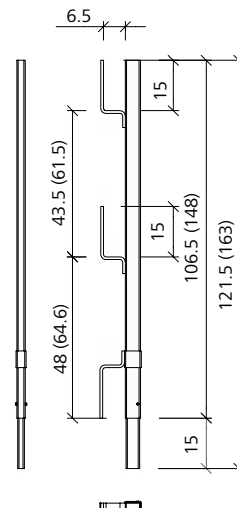


Guard-railing post

Galvanized. Is plugged into the walkway bracket.



Ref.-No.	Description / Application	m ²	kg
29-106-75	Guard-railing post 100, galv.		3.7
29-106-85	Guard-railing post 140, galv.		4.7



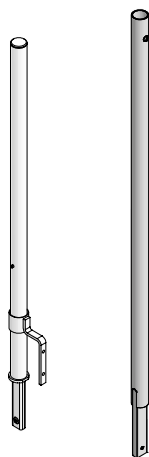
The numbers in parentheses refer to the Guard-railing post 140

Wall formwork

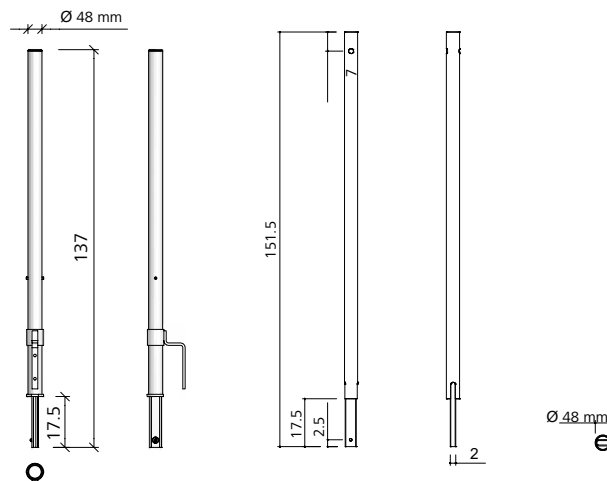
Mammut 350

Guard-railing post 48

Galvanized. With manifold to attach it to the walkway bracket and with tube \varnothing 48 mm to attach tube couplers.

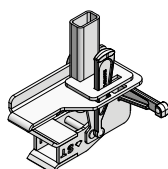


Ref.-No.	Description / Application	m ²	kg
29-106-80	Guard-railing post 48/120 (UK), galv.	5.5	
29-920-80	Guard-railing post 48/134	5.5	

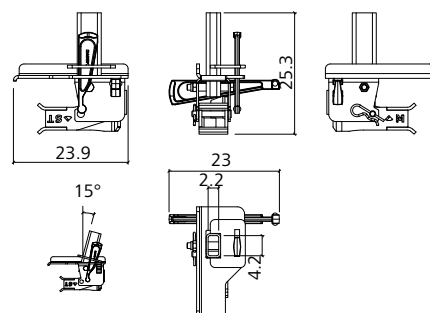


Tilting bracket 40/60

Galvanized. Used to attach MEVA guard-railing posts to create a fall protection system. It can be set up vertically to facilitate the installation of safety meshes or railing boards or inclined by 15° to create a larger working area. Secured with a wedge to the frame profile of 40 and 60 mm.

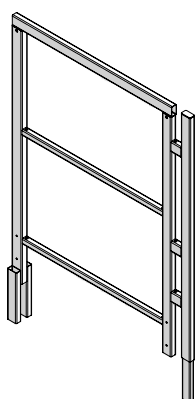


Ref.-No.	Description / Application	m ²	kg
29-920-82	Tilting bracket 40/60	4.9	

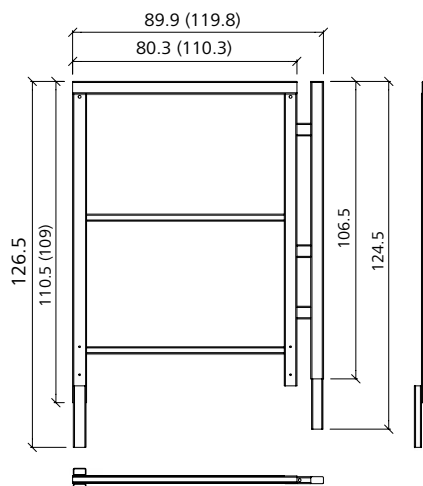


Side railing

Galvanized. Is plugged into the walkway bracket.



Ref.-No.	Description / Application	m ²	kg
29-108-20	Side railing 90/100, galv.	12.3	
29-108-30	Side railing 125/100, galv.	13.8	



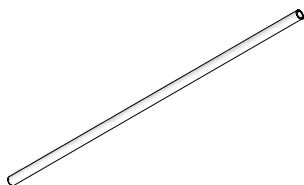
The numbers in parentheses refer to the Side railing 125/100

Wall formwork

Mammut 350

Scaffold tube

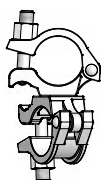
Galvanized. Is used as hand-rail / mid-rail in combination with guard-railing post 48.



Ref.-No.	Description / Application	m ²	kg
29-412-23	Scaffold tube 48/200		9.4
29-412-26	Scaffold tube 48/300		14.1
29-412-27	Scaffold tube 48/400		18.8
29-412-25	Scaffold tube 48/500		23.5
29-412-28	Scaffold tube 48/600		28.2

Swivel-joint coupler 48/48

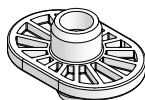
Galvanized. Connects 2 scaffold tubes with Ø 48.3 mm at any angle required.



Ref.-No.	Description / Application	m ²	kg
29-412-52	Swivel-joint coupler 48/48		1.2

M safety bolt

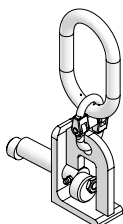
Secures stacked Mammut and M 350 panels. Black bolt for panels for widths less than 250 cm, grey bolt for panels 250 cm wide or wider.



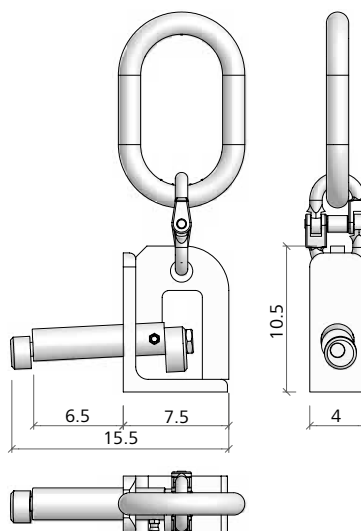
Ref.-No.	Description / Application	m ²	kg
40-131-20	Safety plug M stacks, black		22.0
40-131-25	Safety plug M 350/250 stacks, grey		22.0

Lifting hook 60

Galvanized. Allows any 4-rope crane slings available on site to be used to move panel stacks. Always use 4 hooks at a time. Max. load capacity 10 kN (1 ton) per lifting hook. Max. weight of a panel stack 2 tons. Refer to the lifting hook Operating Instructions for application and safety test.



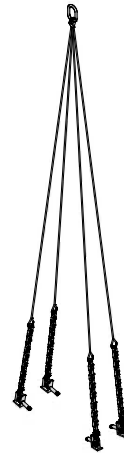
Ref.-No.	Description / Application	m ²	kg
29-401-40	Lifting hook 60		1.7



Crane slings 60

4 polyester ropes, 5 m long. With 60 cm lifting chain and 4 lifting hooks. Max load capacity 20 kN (2 tons). Is used to load and unload trucks and to move panel stacks near the ground.

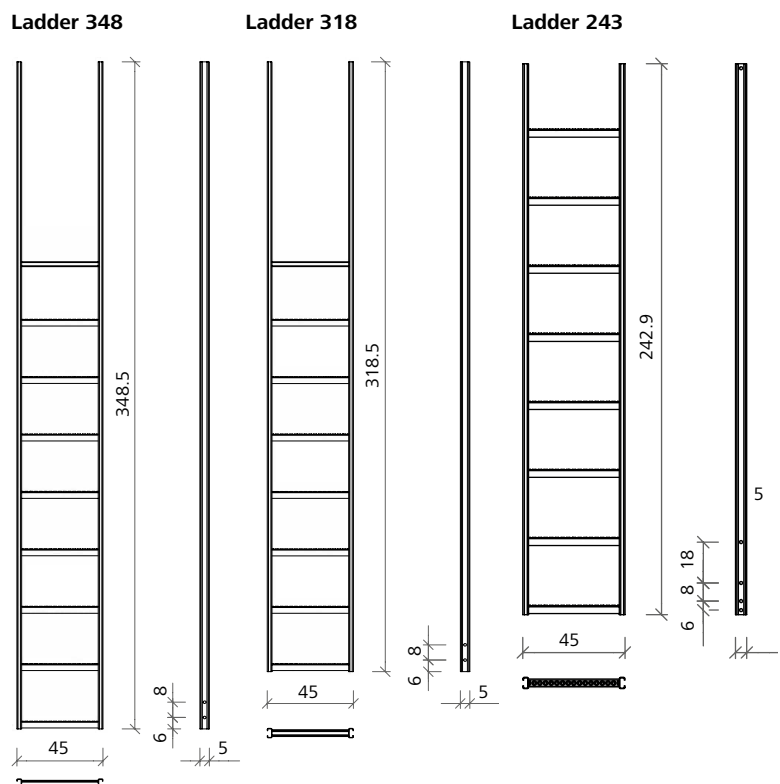
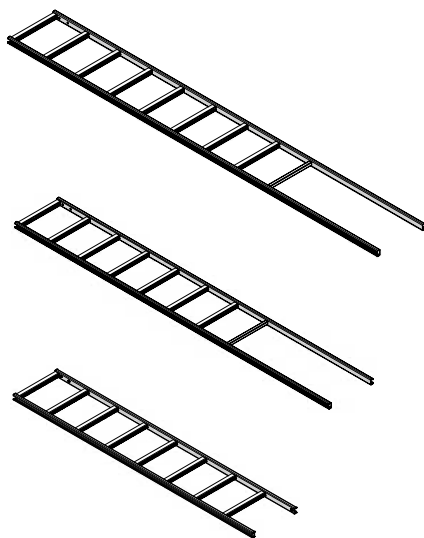
Ref.-No.	Description / Application	m ²	kg
29-401-45	Crane slings 60		22.0



Ladder

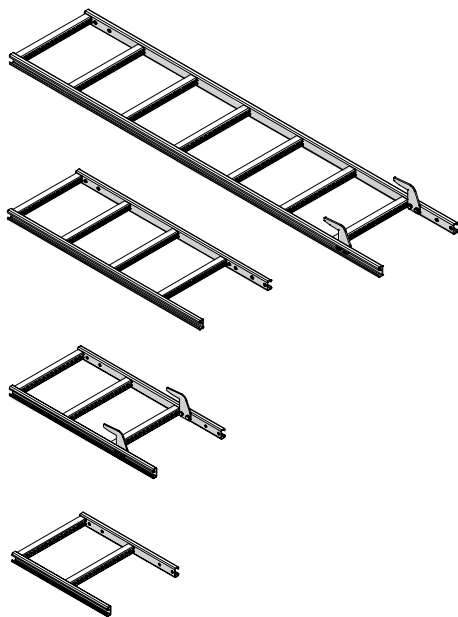
Galvanized. Is hooked into the CF-access platform and automatically secured. Can be extended with extension ladders. Safety cages are required for operational safety.

Ref.-No.	Description / Application	m ²	kg
29-414-50	Ladder 348		23.2
29-414-55	Ladder 318		21.1
29-416-50	Ladder 243		17.2



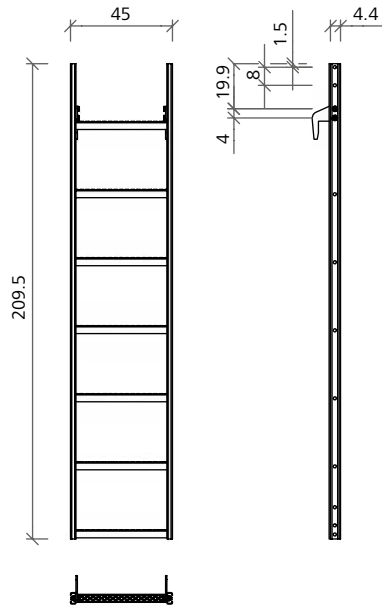
Extension ladder 210

Galvanized. Depending on the required height, the extension ladder is either hooked into the steps of the ladder or bolted to the ladder with the ladder connector. The extension ladder must be secured with the Ladder fixture 33/45. An additional extension in increments of 30 cm is achieved by hooking an extension ladder into the appropriate step.

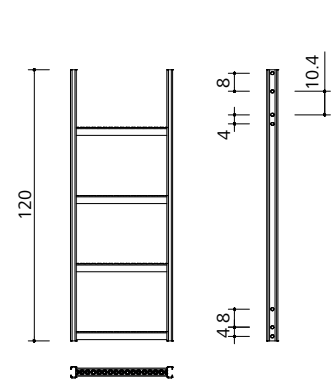


Ref.-No.	Description / Application	m ²	kg
29-416-52 Extension ladder 270.....		19.2
29-414-60 Extension ladder 210.....		15.9
29-416-55 Extension ladder 120.....		8.5

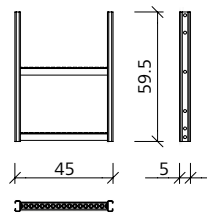
Extension ladder 210



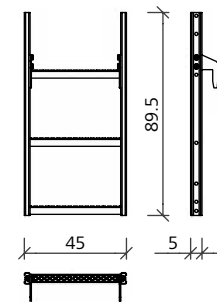
Extension ladder 120



Verlängerungsleiter 60

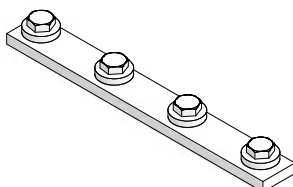


Verlängerungsleiter 90

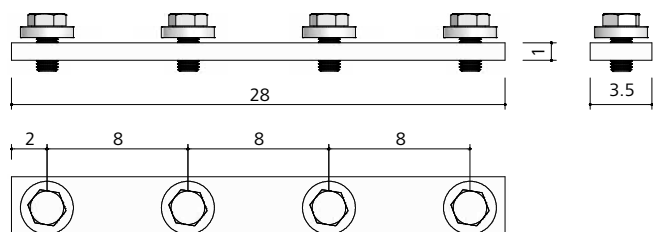


Ladder connector

Galvanized. Connects the joint of two extension ladders without the need to hook one ladder into a step of the other.



Ref.-No.	Description / Application	m ²	kg
29-416-60 Extension ladder 90.....		7.4



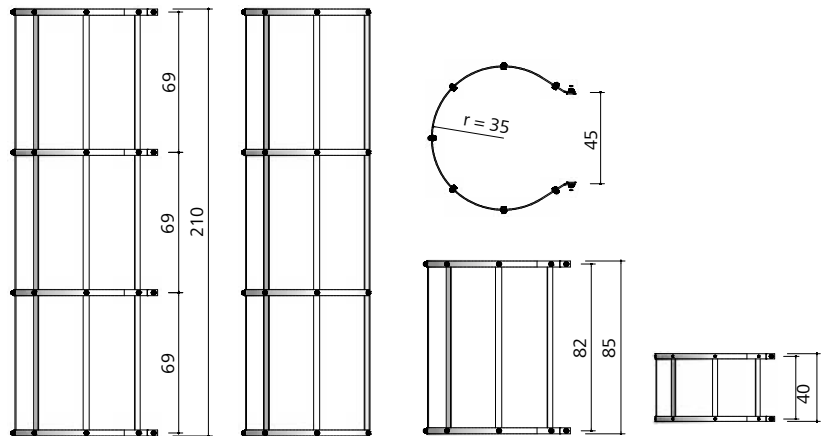
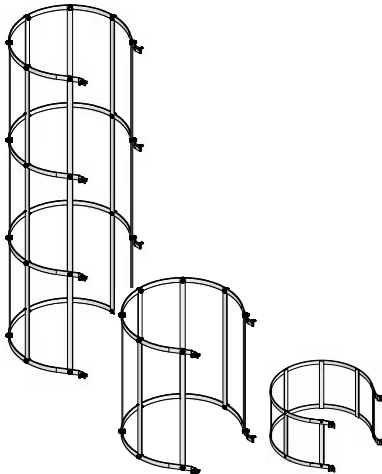
Wall formwork

Mammut 350

Safety cage

Galvanized. Internal Ø 70 cm. Protects workers when ascending and descending the ladder. The safety cages are attached to the (extension) ladders with the integrated hammerhead screws.

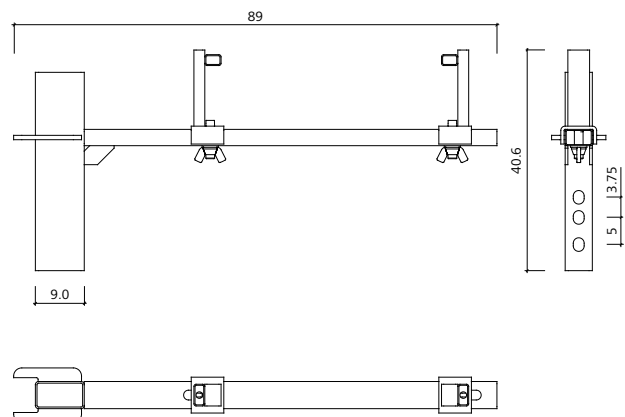
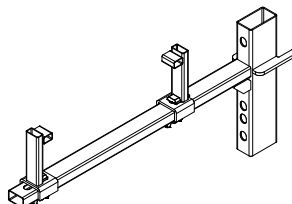
Ref.-No.	Description / Application	m ²	kg
29-416-62 Extension ladder 60.....	4.4	
29-414-70 Ladder connector.....	1.0	
29-414-85 Safety cage 210.....	27.9	
29-414-90 Safety cage 85.....	12.0	
29-416-90 Safety cage 40.....	8.2	



Ladder fixture 33/45

Galvanized. Is attached to the multi-function profile of the wall formwork panel with a flange screw 18. When used for formwork heights from 350 cm to 450 cm, the STB 450 support frame requires three ladders fixtures 33/45. For formwork heights exceeding 450 cm, contact the MEVA application engineering.

Ref.-No.	Description / Application	m ²	kg
29-404-35 Ladder fixture 33/45.....	6.4	

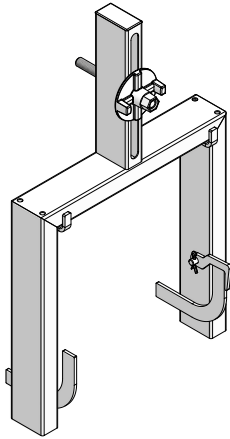


Wall formwork

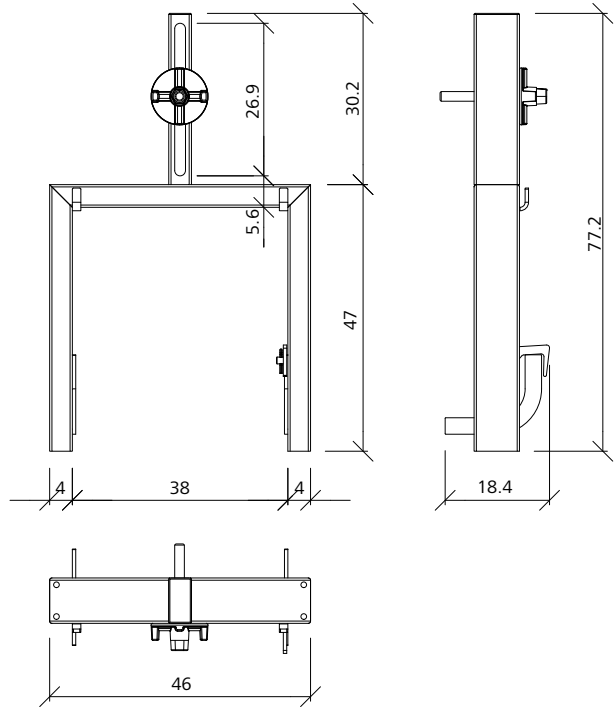
Mammut 350

Ladder fixture panel top

Galvanized. Attached to the multi-function profile at the top of the horizontal or vertical panel to hold the ladder or extension ladder.

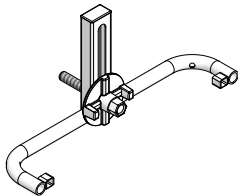


Ref.-No.	Description / Application	m ²	kg
29-416-82	Ladder fixture panel top		7.9

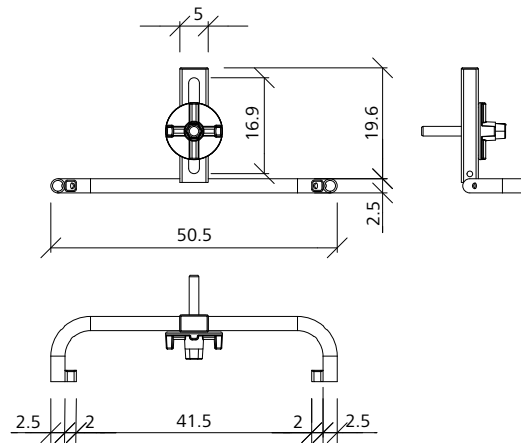


Ladder fixture panel bottom

Galvanized. Attached to the multi-function profile at the bottom of the horizontal or vertical panel to hold the ladder or extension ladder.



Ref.-No.	Description / Application	m ²	kg
29-416-84	Ladder fixture panel bottom		2.4



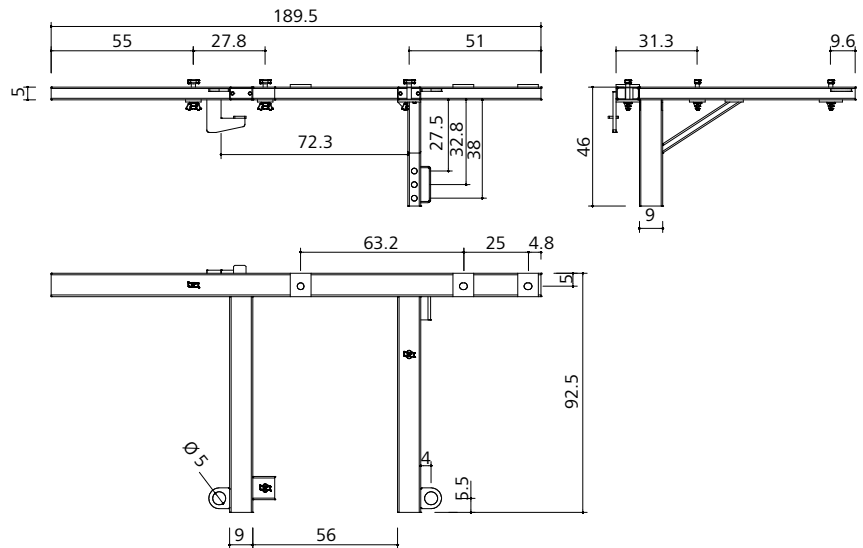
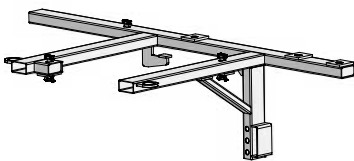
Wall formwork

Mammut 350

Cantilever angle 100/125

Galvanized. Is attached to the M 350 column panel with 2 transport devices M 24/160 through the transport hole. The CF access platform is secured with the integrated hammer head screw.

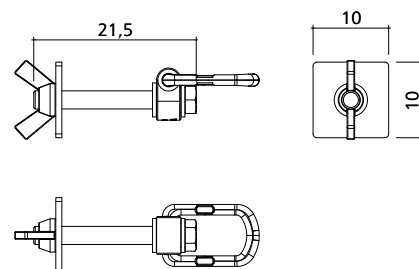
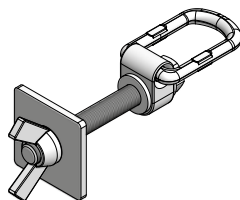
Ref.-No.	Description / Application	m ²	kg
29-404-25	Cantilever angle 100/125		32.8



Transport device M 24/160

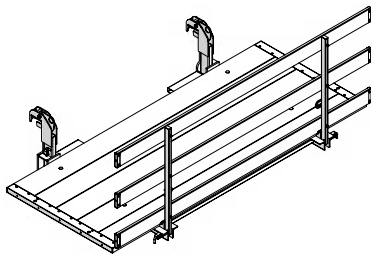
Is used for the vertical transport of M 350 column panels and screwed through the transport holes.

Ref.-No.	Description / Application	m ²	kg
29-404-30	Transport device M 24/160		2.8

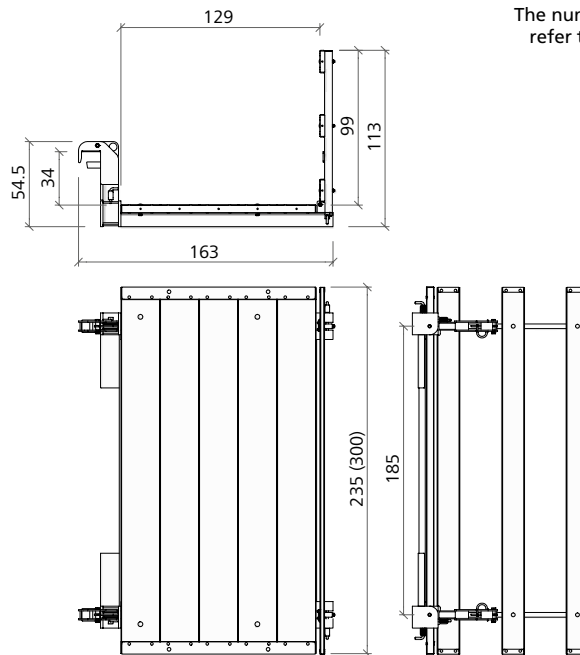


Folding access platform BKB 125

Self-locking; ready-made platform with a foldable guard-railing and an overall width of 125 cm; it is suspended onto the frame profile of the panels. The 48 mm thick planking is protected at the front ends. Stacking height 17 cm; load capacity 2 kN/m². This platform is used with the formwork systems AluStar/StarTec and Mammut/Mammut 350/Mammut XT.

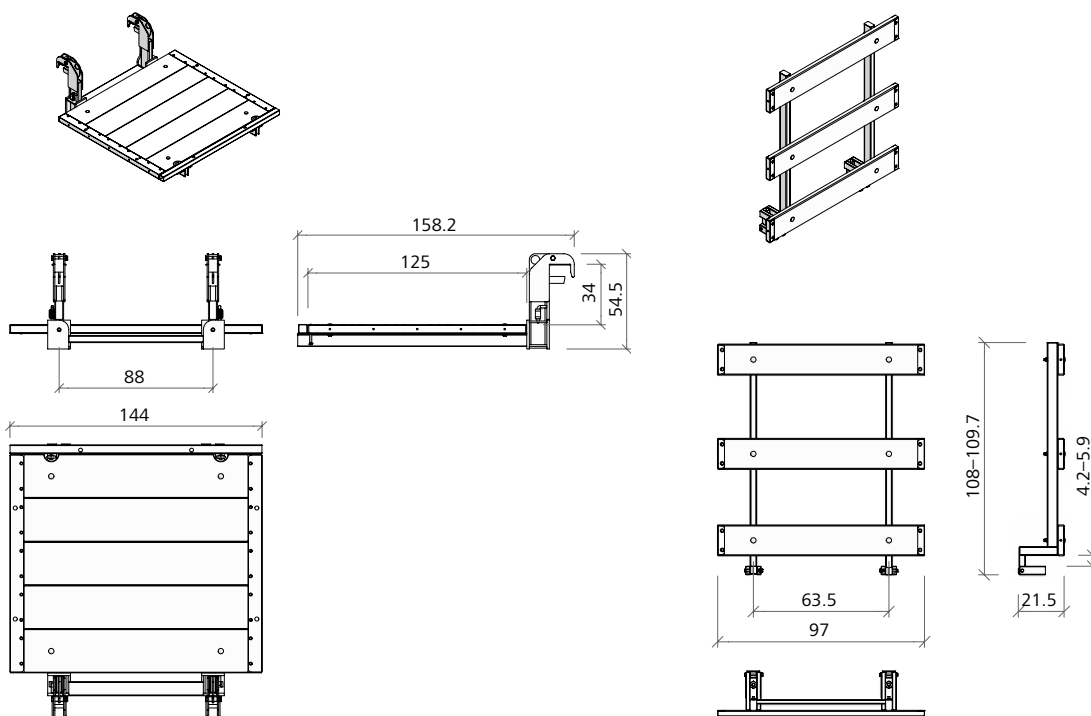


Ref.-No.	Description / Application	m ²	kg
29-417-10	Folding access platform BKB 125/235	185.0	
29-417-20	Folding access platform BKB 125/300	205.0	
29-417-00	Folding access platform BKB 125/140	120.0	
29-417-30	Side railing BKB 125	17.0	



The numbers in parentheses refer to the BKB 125/300

Folding access platform BKB 125/140 Side railing BKB 125



Notes

Grid of dots for notes

Notes

A large grid of small dots for taking notes, consisting of approximately 30 columns and 40 rows of dots.

Notes

Grid of dots for notes



MEVA Schalungs-Systeme GmbH

Industriestrasse 5 Tel. +49 7456 692-01
72221 Haiterbach Fax +49 7456 692-66
Deutschland info@meva.net

www.meva.net