

This product list includes all parts necessary for most applications. For parts required for special applications, please refer to the MEVA price list. Dimensions are in centimetres (cm) unless another measure is shown.

Contents

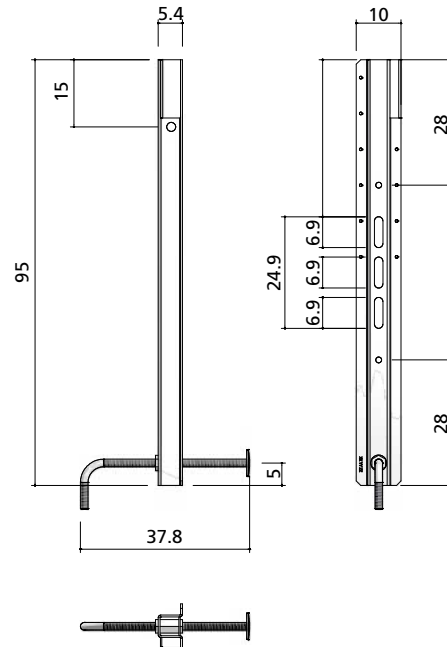
Adjustable spanner	32
Anchor sleeve	26
Anchor support DW 15 - DW 26.....	29
Brace bracket 80.....	28
Concrete glue (A + B).....	27
Coupling nut.....	30
Door spindle MFS	27
Double anchor DW.....	30
Double-headed ground nail 25/280.....	28
Extractor for double-headed ground nail	28
Fair-faced concrete plug	27
Fix anchor	31
Guard-railing post 48/134.....	25
Nailable connector for fair-faced concrete	26
Planing cap	32
Plastic tube	31
Plug.....	26
Pressure gauge	30
Safety mesh	33
Safety mesh corner hinge.....	33
Safety mesh extension	33
Shoe MFS	34
Single anchor DW.....	29
Spiral anchor DW 15/100	32
Stop-end bracket MFS.....	24
Stop-end rail MFS	24
Stop-end spindle MFS	25
Upstand bracket.....	31
Wrench MFS.....	27

Stop-end rail MFS

Steel. Galvanized. Is used to form slab ends for slabs up to 60 cm thick.

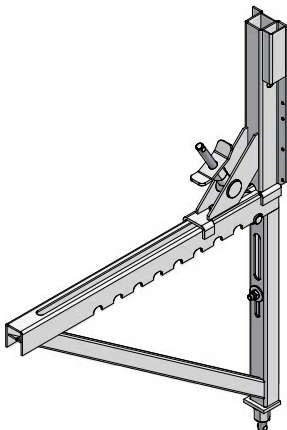


Ref. No.	Description / Application	m ²	kg
29-921-50 Stop-end rail MFS		7.2

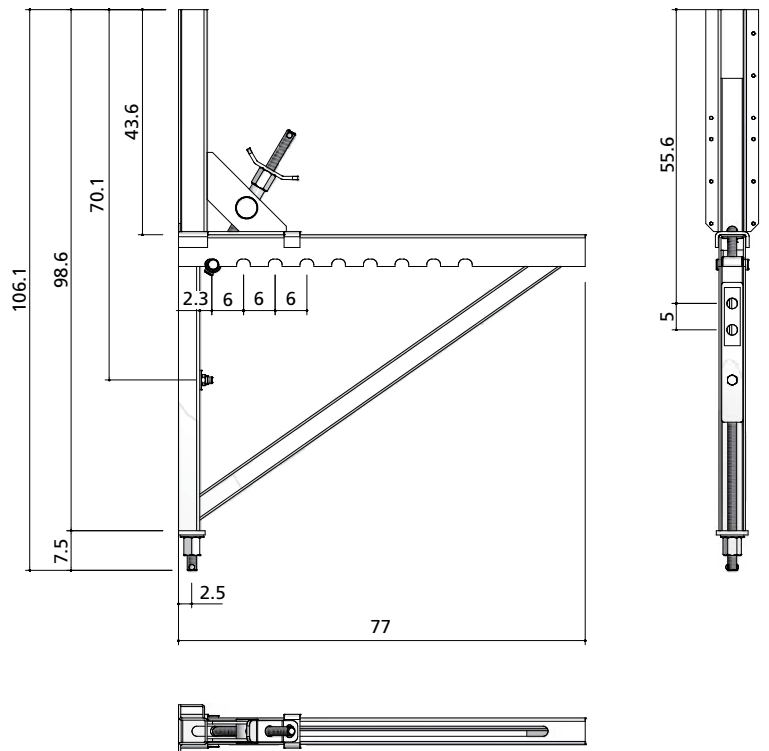


Stop-end bracket MFS

Steel, galvanized. Is used for cantilevers up to 50 cm long and for slabs up to 40 cm thick. Includes formwork support and pin for MEVA guard-railing post.



Ref. No.	Description / Application	m ²	kg
29-921-40 Stop end bracket MFS		14.5

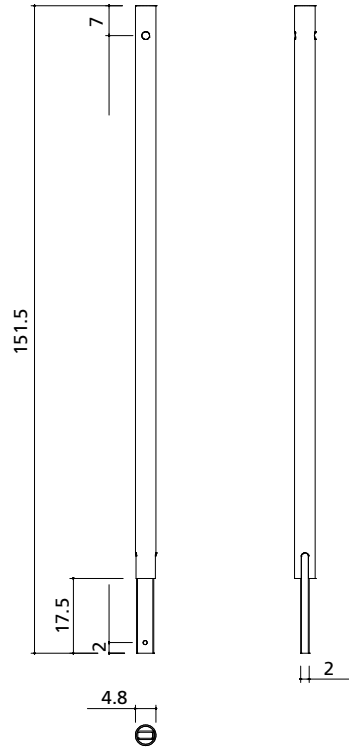


Guard-railing post 48/134

Galvanized. Is used as guard-railing together with the MFS safety mesh. Can be plugged into all MEVA scaffolding brackets, into the stop-end rail MFS, into the stop-end bracket MFS and into the shoe MFS. The scaffold tubes and scaffold couplers must be ordered separately.

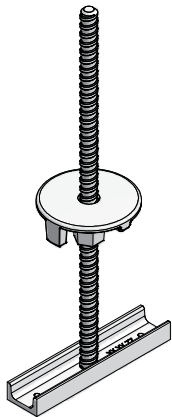


Ref. No.	Description / Application	m ²	kg
29-920-80	Guard-railing post 48/134	5.5	

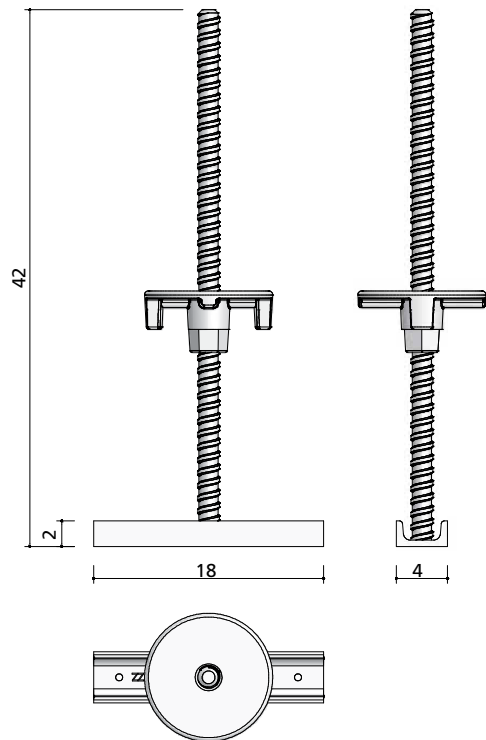


Stop-end spindle MFS

Steel, galv., DW 15. Is used as an anchor for the stop-end rail and the formwork.

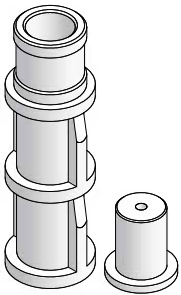


Ref. No.	Description / Application	m ²	kg
29-921-55	Stop end spindle MFS DW 15	1.9	

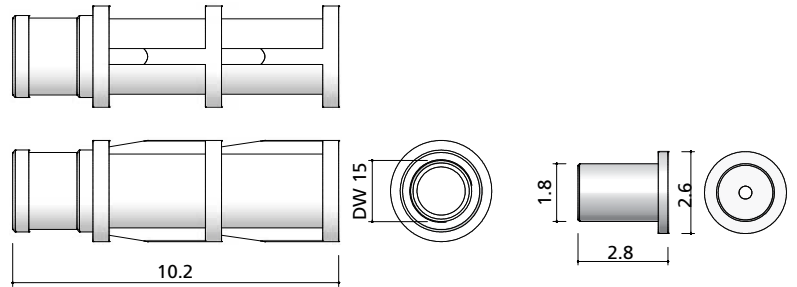


Anchor sleeve

High-density plastic. With nail holder 18.
Is pressed onto the nail-holder that is
nailed to the formwork. Technical data:
Extraction force: 40 kN
Admissible load: 6.5 kN (DW 15)
Required concrete strength: 15 N/mm²



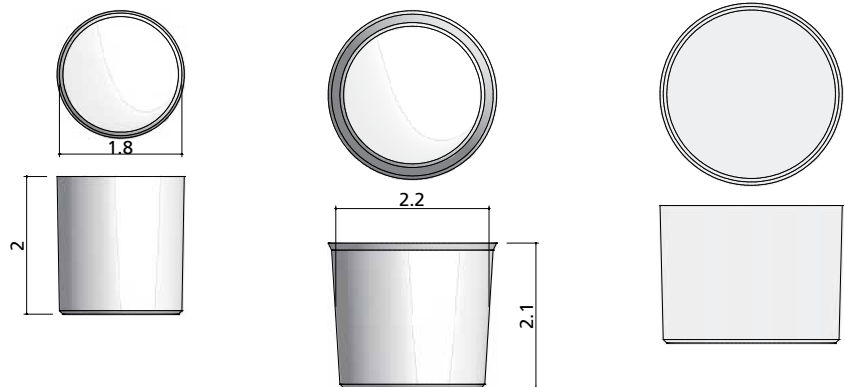
Ref. No.	Description / Application	m ²	kg
29-917-90	Anchor sleeve DW 15		
29-917-95	Anchor sleeve DW 20		7.5


Plug

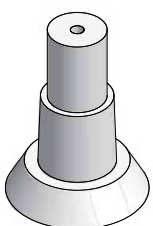
Plastic. Is used to seal anchor sleeves
and plastic tubes.



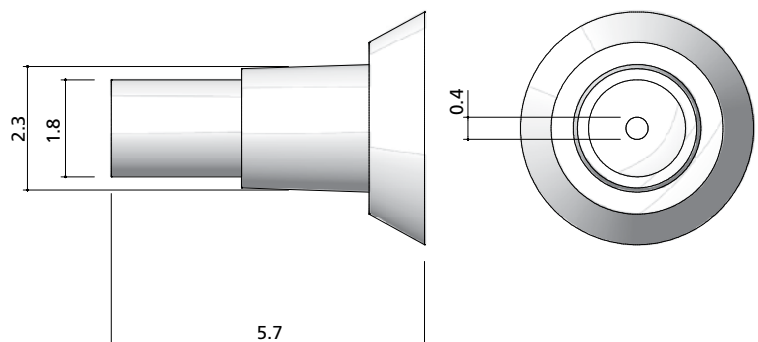
Ref. No.	Description / Application	m ²	kg
29-922-10	Plug 18		0.6
29-922-15	Plug 22		0.7
29-922-20	Plug 26		0.8


Nailable connector for fair-faced concrete

Plastic, for fair-faced concrete plug
DW 15, red colour. Is used to attach the
anchor sleeve DW 15.

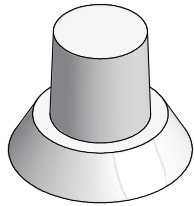


Ref. No.	Description / Application	m ²	kg
29-921-80	Nailable connector for fair-faced concrete DW 15		2.0

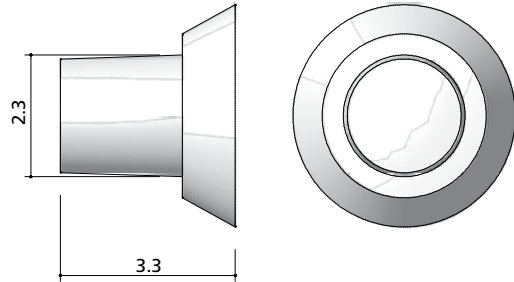


Fair-faced concrete plug

Made of concrete. Seals the nailable connector for fair-faced concrete. Is glued with concrete glue (A + B).

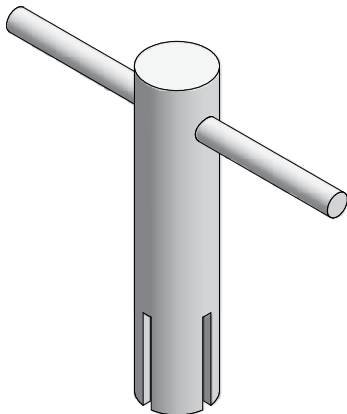


Ref. No.	Description / Application	m ²	kg
29-921-85	Fair-faced concrete plug DW 15	5.0

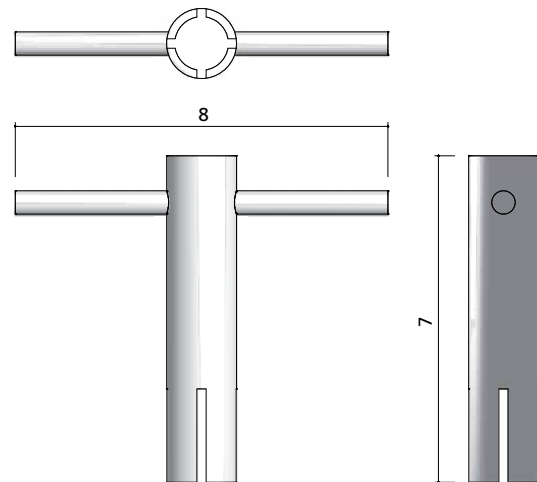


Wrench MFS

Steel, galvanized. Facilitates unscrewing the nailable connector for fair-faced concrete.



Ref. No.	Description / Application	m ²	kg
29-921-45	Wrench MFS	1.0



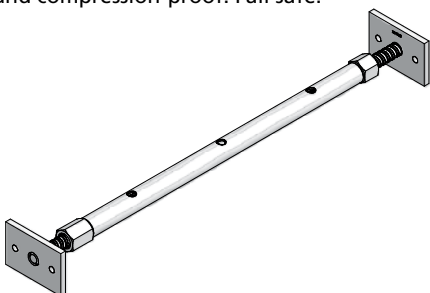
Concrete glue (A + B)

Not shown here. 2-component concrete glue for concrete plugs. Quantity is sufficient for 150 plugs.

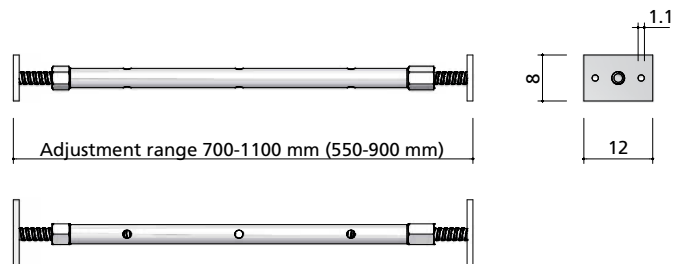
Ref. No.	Description / Application	m ²	kg
53-210-70	Concrete glue (A + B)	3.0

Door spindle MFS

Steel, galv., DW 20. Adjustment ranges are 700-1100 mm and 550-900 mm. Is used to brace door and window block-outs, contains nail holes. Torsion-proof and compression-proof. Fail safe.



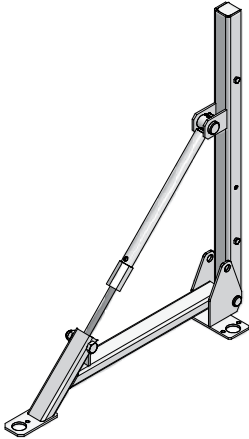
Ref. No.	Description / Application	m ²	kg
29-921-65	Door spindle MFS 700-1100 mm	4.6
29-921-63	Door spindle MFS 550-900 mm	4.0



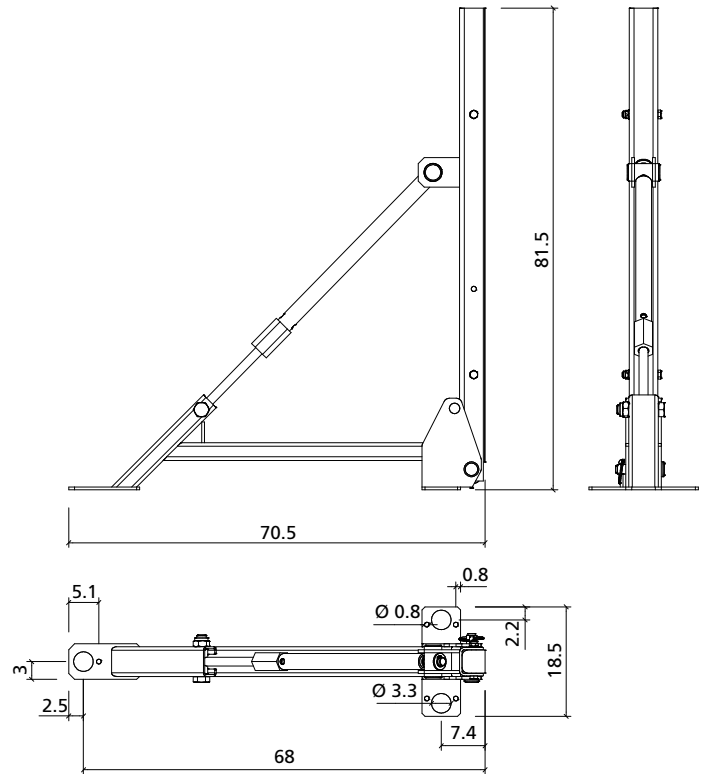
(The figures in parentheses refer to door spindle MFS 550-900 mm)

Brace bracket 80

Galvanized. Can be used for floor slabs and slab ends up to 80 cm high. Can be inclined by up to +/- 15°. With plastic nail bar. Can be folded for transport.



Ref. No.	Description / Application	m ²	kg
29-921-35 Brace bracket 80.....		10.5



Double-headed ground nail 25/280

Not shown. Is used to attach brace bracket 80. Double-headed. Is removed from the earth with the extractor for double-headed ground nail (to be ordered separately).

Ref. No.	Description / Application	m ²	kg
29-800-45 Double-headed ground nail 25/280		2.0

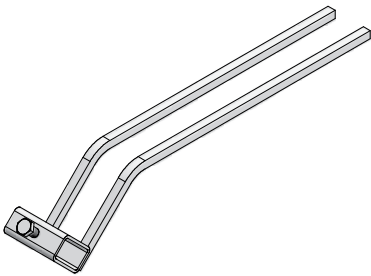
Extractor for double-headed ground nail

Not shown. Is used to remove the ground nail from the earth together with a lever rod (not supplied).

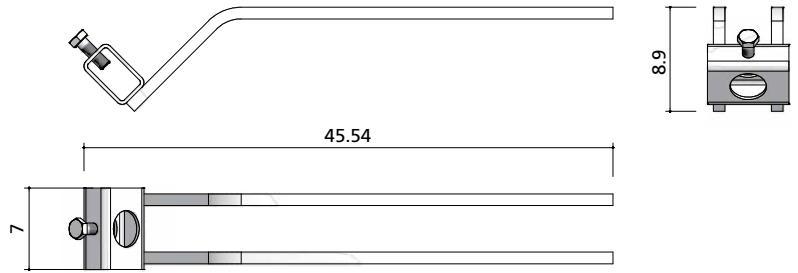
Ref. No.	Description / Application	m ²	kg
29-800-50 Extractor for double-headed ground nail.....		0.8

Anchor support DW 15 - DW 26

Steel, uncoated. Is attached at upper rebars. Bent by 45°. For direct support of tie rods DW 15, DW 20 and DW 26. The tie rods can be recovered and re-used if PVC sleeves are used. Is always attached with integrated adjusting screw.



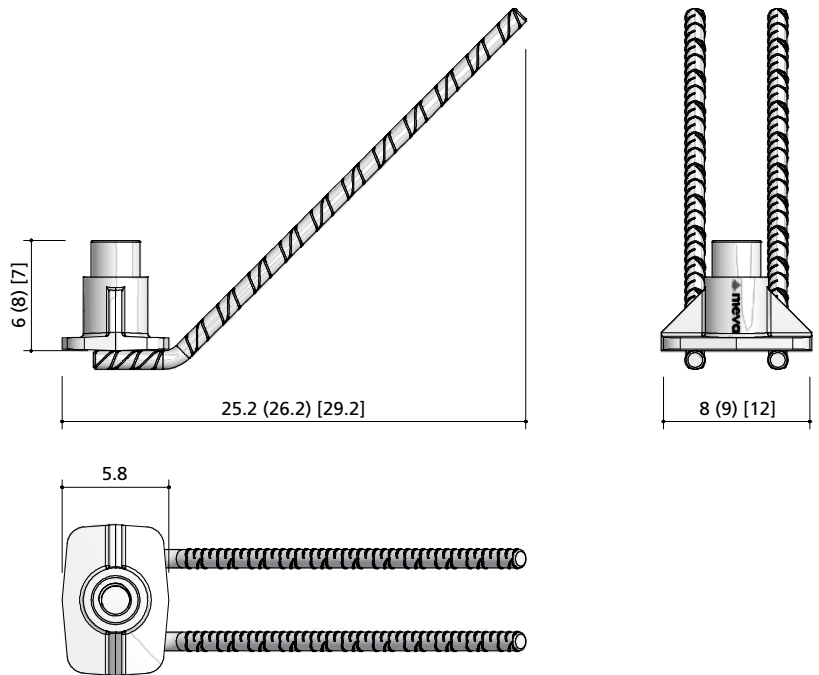
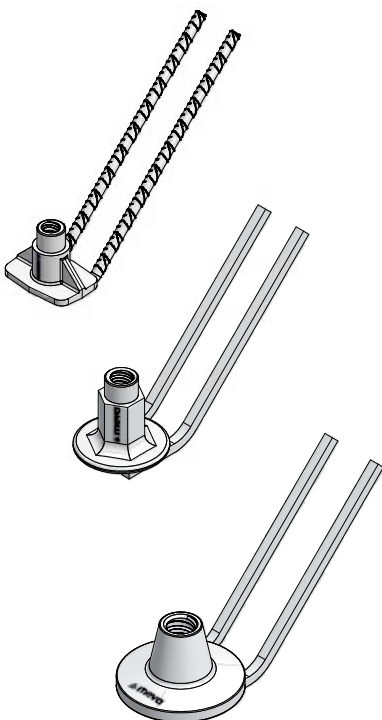
Ref. No.	Description / Application	m ²	kg
29-925-80	Anchor support DW 15 - DW 26		0.9



Single anchor DW

Steel, uncoated. Is used for 45° anchoring of support frames in the bottom slab. Attachment at bottom rebars. Admissible tensile force:
 DW 15: 90 kN
 DW 20: 160 kN
 DW 26: 250 kN

Ref. No.	Description / Application	m ²	kg
29-925-40	Single anchor DW15		0.8
29-925-45	Single anchor DW 20		1.3
29-925-50	Single anchor DW 26		2.4



(The figures in parentheses refer to single anchor DW 20)
 [The figures in brackets refer to single anchor DW 26]

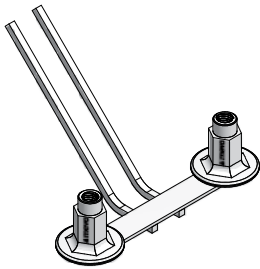
Double anchor DW

Steel, uncoated. Is used for 45° anchoring of support frames to the concrete slab. Attachment at bottom rebars.

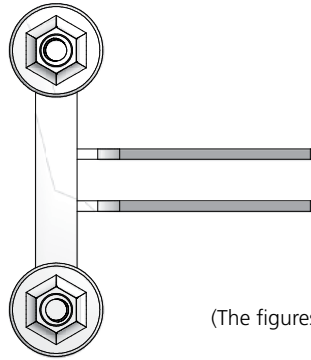
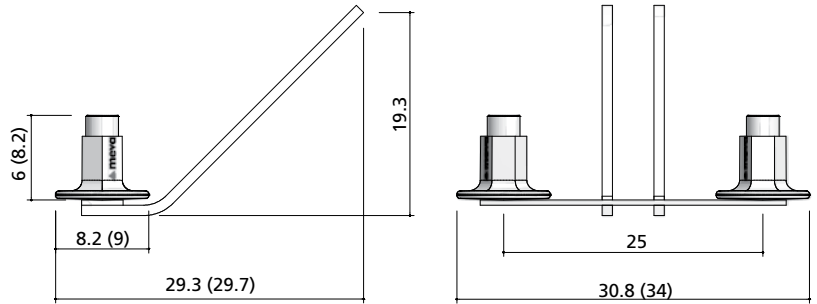
Admissible load:

DW 15: 180 kN

DW 20: 320 kN.



Ref. No.	Description / Application	m ²	kg
29-925-60 Double anchor DW 15	1.8
29-925-65 Double anchor DW 20	2.7



(The figures in parentheses refer to double anchor DW 20)

Pressure gauge

Not shown here. Is used to measure anchor forces from 250 to 400 kN.

Includes compensating plate for tie rods, with 50 mm hole diameter.

Ref. No.	Description / Application	m ²	kg
29-915-15 Pressure gauge 250 kN	6.4
29-915-00 Pressure gauge 400 kN	6.4

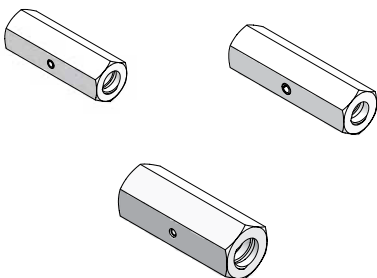
Coupling nut

With Dywidag-thread, DIN 18216. Is used to connect tie rods to the anchors cast in the concrete slab. Adm. load capacity and spanner width (mm):

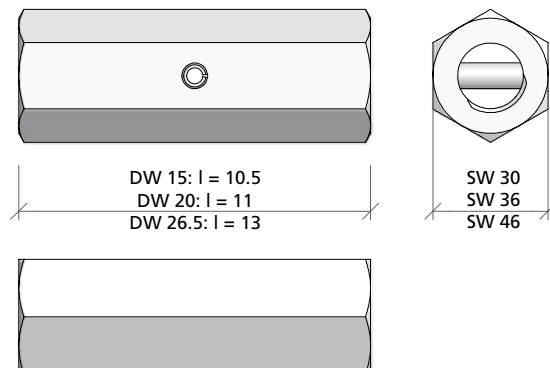
Ø 15 mm: 90 kN, SW 30

Ø 20 mm: 160 kN, SW 36

Ø 26.5 mm: 250 kN, SW 46

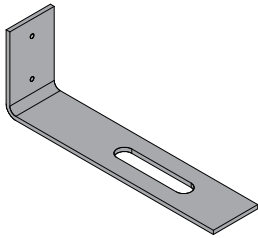


Ref. No.	Description / Application	m ²	kg
29-900-55 Coupling nut 15 (SW 30)	0.4
29-900-50 Coupling nut 20	0.7
29-900-56 Coupling nut 26.5	1.4

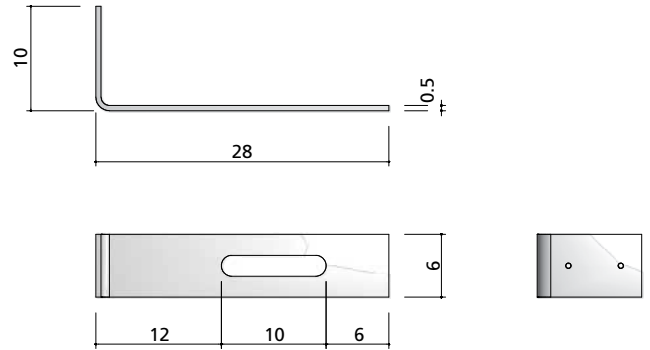


Upstand bracket

Adjustment range 100 mm. Is used to brace upstand formwork.

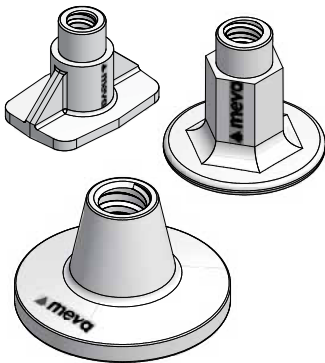


Ref. No.	Description / Application	m ²	kg
29-925-10	Upstand bracket		

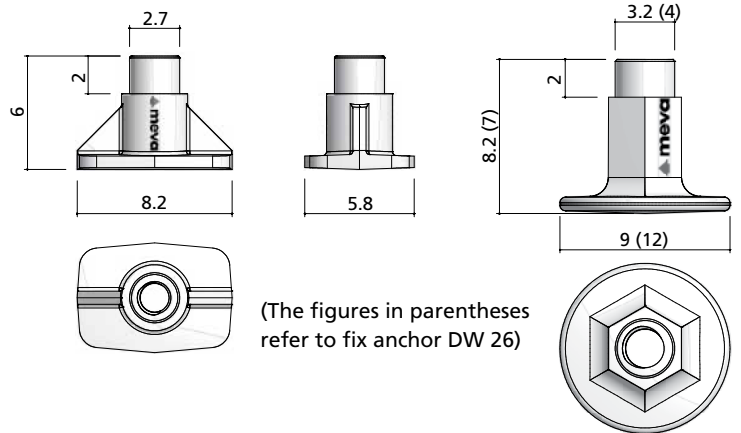


Fix anchor

Uncoated. Is used to anchor tie rods in the concrete with anchor supports, single or double anchors.

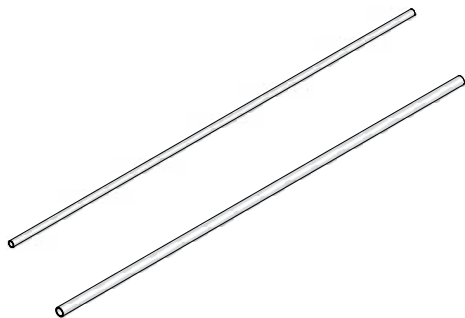


Ref. No.	Description / Application	m ²	kg
29-926-60	Fix anchor DW 15		0.5
29-926-65	Fix anchor DW 20		0.9
29-926-70	Fix anchor DW 26		1.9

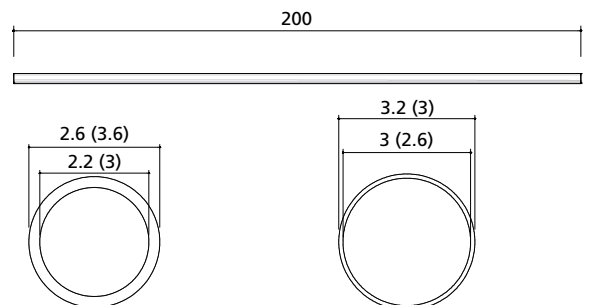


Plastic tube

Is used as a plastic sleeve for a tie rod that is to be recovered and re-used. Standard length 2.00 m.



Ref. No.	Description / Application	m ²	kg
29-902-30	Plastic tube D22/200		0.4
29-902-28	Plastic tube D30/200		0.4
29-902-29	Plastic tube D26/200 for fix anchor DW 15		0.4
29-902-27	Plastic tube D32/200 for fix anchor DW 20		3.8

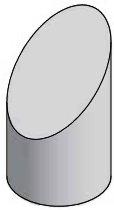


Plastic tube D22/200 (Plastic tube D30/200)

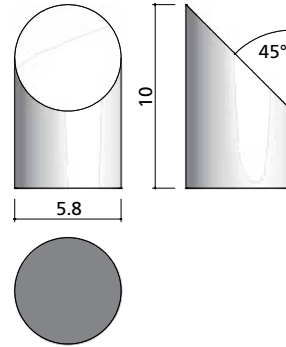
Plastic tube D26/200 for fix anchor (Plastic tube D32/200 for fix anchor)

Planing cap

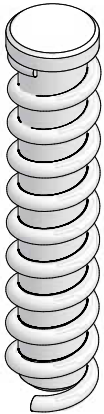
Hard foam, 10 cm long, 45° end piece.
For DW 15 and DW 20. Is plugged onto the DW tie rod or plastic sleeve for one-sided anchoring of support frames STB. Hole depth 5 cm.



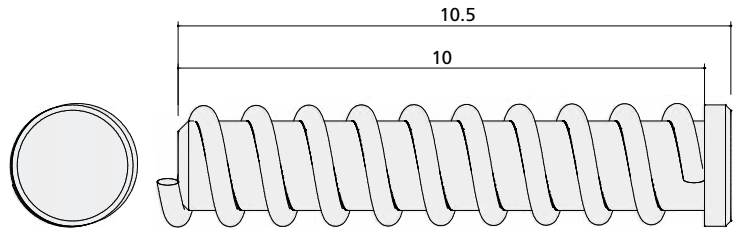
Ref. No.	Description / Application	m ²	kg
29-917-75 Planing cap DW 15		1.0


Spiral anchor DW 15/100

Steel spiral bead, 10 cm long, with styropore core. Designed to anchor equipment parts with tie rods DW 15, e.g. push-pull props for aligning formwork. Remove styropore with 14 mm drill.



Ref. No.	Description / Application	m ²	kg
29-921-10 Spiral anchor DW 15/100		6.1



Concrete strength	Extraction force	Admissible load (with safety factor 3)
7 N/mm ²	25.5 kN	8.5 kN
13 N/mm ²	35.3 kN	11.8 kN
16 N/mm ²	44.2 kN	14.7 kN
24 N/mm ²	49.9 kN	16.6 kN

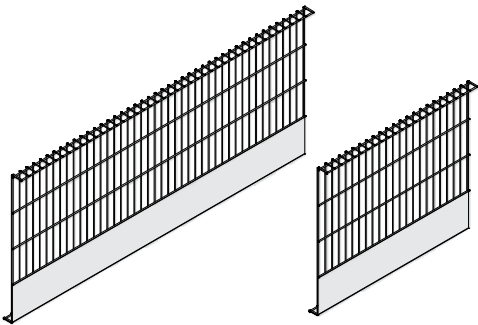
Adjustable spanner

Not shown here. Is suited for DW 15, DW 20 and DW 26 and used to loosen and unscrew recoverable tie rods.

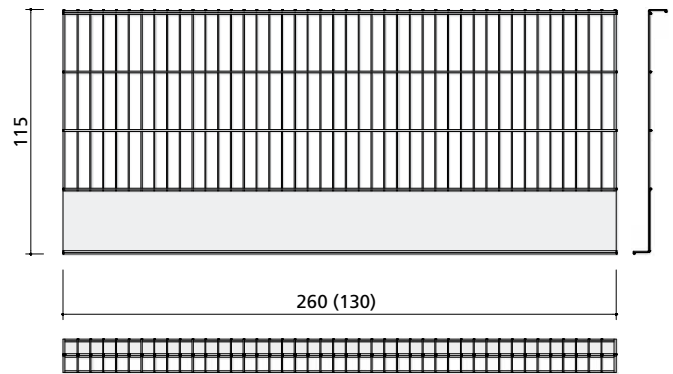
Ref. No.	Description / Application	m ²	kg
29-926-95 Adjustable spanner		1.6

Safety mesh

Steel, painted. Sturdy steel mesh with reinforced, bent edges and closed steel sheet to prevent small items from falling. The safety mesh serves as railing, sheet and mesh. 500 kg impact protection. Meets the requirements as defined by European standard EN 133374, classes A, B and C.



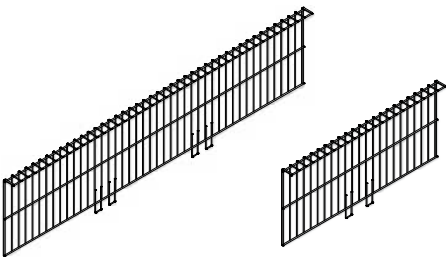
Ref. No.	Description / Application	m ²	kg
29-920-10	Safety mesh 115/260		19.4
29-920-20	Safety mesh 115/130		10.5



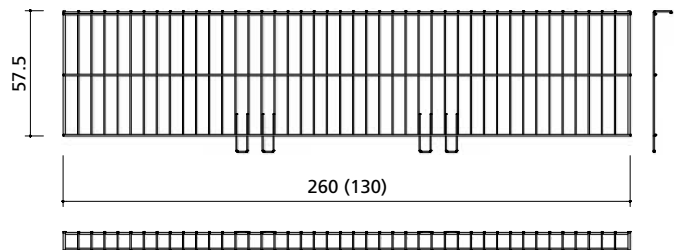
(The figure in parentheses refers to safety mesh 115/130)

Safety mesh extension

Steel, painted. Is used to heighten the safety mesh. 500 kg impact protection. Meets the requirements as defined by European standard EN 133374, classes A, B and C.

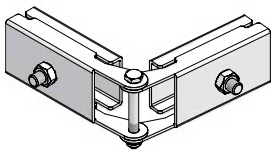


Ref. No.	Description / Application	m ²	kg
29-920-40	Safety mesh extension 57.5/130		5.0
29-920-30	Safety mesh extension 57.5/260		9.3

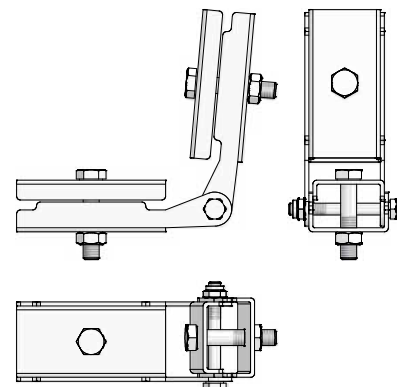


Safety mesh corner hinge

Steel, galvanized. Connects safety meshes at angles from 76° to 284°. Can be attached anywhere at the safety mesh.

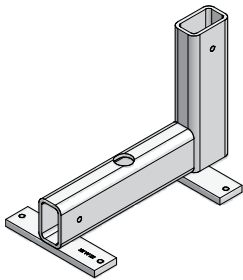


Ref. No.	Description / Application	m ²	kg
29-920-65	Safety mesh corner hinge.....		0.7

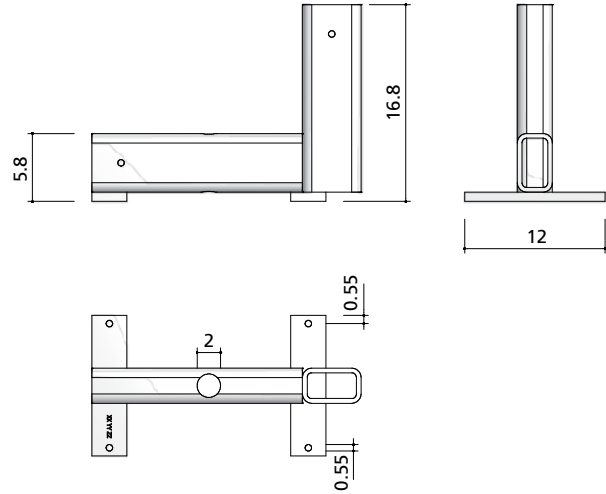


Shoe MFS

Steel, galvanized. Is used together with the spiral anchor, tie rod DW 15 and MEVA guard-railing post to build a fall-down protection at slab edges.



Ref. No.	Description / Application	m ²	kg
29-921-70 Shoe MFS		1.9



Notes

Grid area for notes.



Headquarters (Germany)

MEVA Schalungs-Systeme GmbH
Industriestrasse 5
D-72221 Haierbach
Tel. +49 7456 692-01
Fax +49 7456 692-66
info@meva-international.com
www.meva-international.com

Logistic Centers

A-Pfaffstatten, Tel. 02252 20900-0
D-Berlin, Tel. 03375 9030-0
D-Haierbach, Tel. 07456 692-01
D-Hannover, Tel. 0511 94993-0
GB-Tamworth, Tel. 01827 60217
H-Budapest, Tel. 01 2722222
RO-Bucuresti, Tel. 021 2066460
RUS-Moskva, Tel. 495 7813737
USA-Springfield, Tel. 937 3280022

International Sales & Service

A-Pfaffstatten, Tel. 02252 20900-0
AUS-Adelaide, Tel. 08 82634377
B-Kruike, Tel. 03 250 11 11
CDN-Toronto, Tel. 416 5766397
CH-Seon, Tel. 062 7697100
CO-Bogota, Tel. 01 5204236
F-Sarrequemines, Tel. 0387 959938
GB-Tamworth, Tel. 01827 60217
H-Budapest, Tel. 01 2722222
HR-Bestovje, Tel. 013 323 666
IND-Mumbai, Tel. 022 27563430
LT-Kaunas, Tel. 0684 82795
MAL-Perak, Tel. 12 5209337
N-Oslo, Tel. 067 154200
NL-Gouda, Tel. 0182 570770
PA-Panama City 507 2372222
PL-Bialystok, Tel. 085 6768159
RO-Bucuresti, Tel. 021 2066460
RUS-Moskva, Tel. 495 7813737
RUS-Sankt-Peterburg, Tel. 812 6802890
SGP-Singapore, Tel. 67354459
SLO-Petrovce, Tel. 03 7131500
UAE-Dubai, Tel. 04 3411180
USA-Springfield, Tel. 937 3280022