

Wall formwork

Product list

Please note

This product list includes all parts necessary for most applications. For parts required for special applications, please refer to the MEVA price list. Dimensions are in centimetres (cm) unless another measure is shown.

Contents

Alignment rail	58	Panel height 1.20 m.....	50
Articulated flange nut 15/120	60	Panel height 1.60 m.....	50
Articulated foot plate.....	65	Panel height 2.40 m.....	49
Brace frame 250	62	Panel height 3.00 m.....	48
Braces SRL	64	Plastic tube	59
Cone for plastic tube	60	Plug.....	60
Cotter pin 4	65	Plug D20	58
Dismantling auxiliary 120.....	57	Push-pull prop R	63
Drive nut 60.....	61	Push-pull strut	61
EA/AF-Crane hook	62	RS-assembly lock	56
EA assembly lock	55	Safety mesh.....	67
EA compensation plate	57	Safety plug stacks	69
EA steel filler.....	56	Scaffold tube	68
EcoAs AL Column panel.....	52	Side railing.....	66
EcoAs hinged inside corner	54	Spanner SW 27.....	61
EcoAs hinged outside corner.....	55	Stacking Angle 60/40/23	69
EcoAs inside corner.....	53	Stop end bracket	57
EcoAs Multipurpose panel	53	Stop end fixture 23/40.....	58
EcoAs outside corner	54	Support angle for walkway brackets	59
EcoAs panels	48	Swivel-joint coupler 48/48	69
End plate connector DW15.....	64	Tensioner EA for foundation tape	51
Flange nut 100	60	Tension screw M 350/EA.....	53
Flange screw.....	56	Tie claw 23	61
Foot plate	64	Tie rod DW 15/90	59
Formwork-prop connector.....	63	Tie rod fixture	59
Foundation tape	51	Tilting bracket 23.....	68
Guardrailing post	67	Trolley for foundation tape	51
Guardrailing post 48.....	68	Uni-assembly lock	55
Head bolt 16/90	65	Walkway bracket.....	65
Panel height 0.80 m.....	51	Walkway bracket 65	66

Wall formwork

EcoAs panels

Galvanized and post-treated. Frame profile height 10 cm, frame profile width 23 mm. Three tie holes per panel heights 300 cm and 240 cm, two tie holes per panel heights 160 cm and 120 cm. Heights 240 cm, 160 cm and 120 cm: centered tie hole at the top and bottom for horizontal application. The frames of EA panels are made of closed steel profiles and are torsion proof. The EcoAs is optionally covered with an alkus board or a multi-layer wood board (birch ply BP). All around grooves and EA assembly locks guarantee a tight and perfectly aligned stepless panel connection. Conical anchor sleeves are weld into the frames. Multi function profiles allow for an easy, fast and safe attachment of accessories.

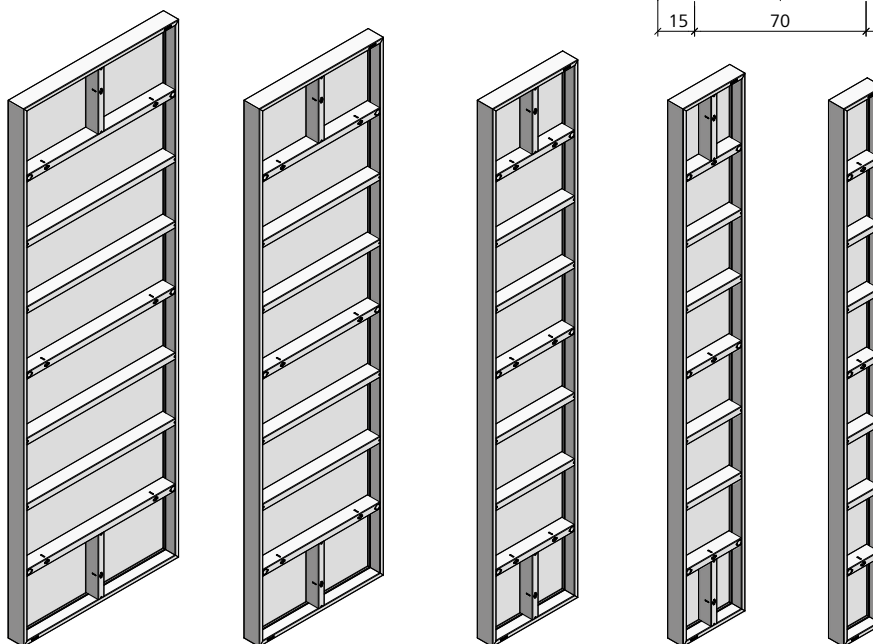
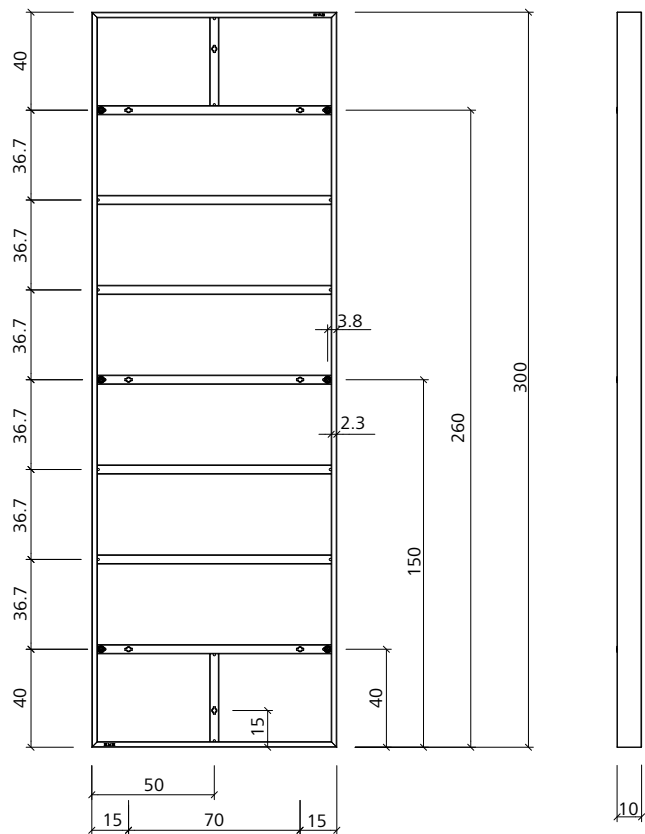
Panel height 3.00 m

7 cross stiffeners, of which 5 are multi-function profiles (weld-in nuts with Dywidag thread). 3 tie holes per panel height (2 additional multi-function profiles with tie holes at the top and bottom for horizontal application for bottom slabs).

Important

Tie holes that are not used must always be closed with plastic plug D20.

Ref.-No.	Description / Application	m ²	kg
21-703-11	EcoAs AL.....300/100	3.00	97.80
21-703-21	EcoAs AL.....300/80	2.40	84.10
21-703-46	EcoAs AL.....300/55	1.65	68.50
21-703-61	EcoAs AL.....300/40	1.20	54.50
21-703-76	EcoAs AL.....300/25	0.75	40.70
21-703-10	EcoAs BP.....300/100	3.00	94.50
21-703-20	EcoAs BP.....300/80	2.40	81.50
21-703-45	EcoAs BP.....300/55	1.65	64.40
21-703-60	EcoAs BP.....300/40	1.20	53.20
21-703-75	EcoAs BP.....300/25	0.75	40.00



Wall formwork

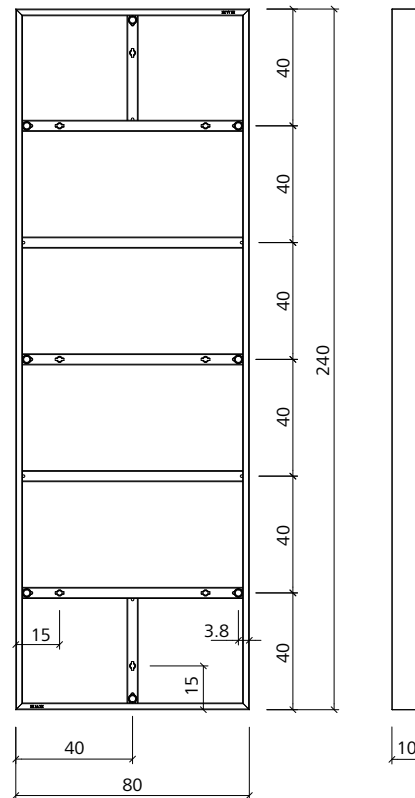
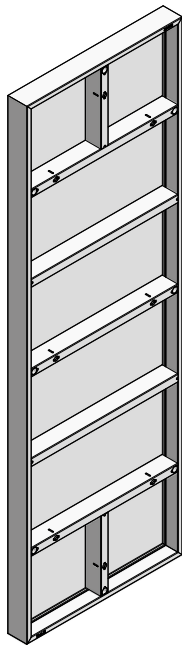
Panel height 2.40 m

5 cross stiffeners, of which 3 are multi-function profiles (weld-in nuts with Dywidag thread). 3 tie holes per panel height (2 additional multi-function profiles with tie holes at the top and bottom for horizontal application for bottom slabs).

Important

Tie holes that are not used must always be closed with plastic plug D20.

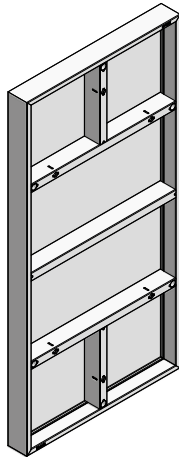
Ref.-No.	Description / Application	m ²	kg
21-700-21	EcoAs AL..... 240/80	1.92	68.00
21-700-46	EcoAs AL..... 240/55	1.32	55.00
21-700-51	EcoAs AL..... 240/50	1.20	52.00
21-700-56	EcoAs AL..... 240/45	1.08	49.00
21-700-61	EcoAs AL..... 240/40	0.96	41.50
21-700-76	EcoAs AL..... 240/25	0.60	33.00



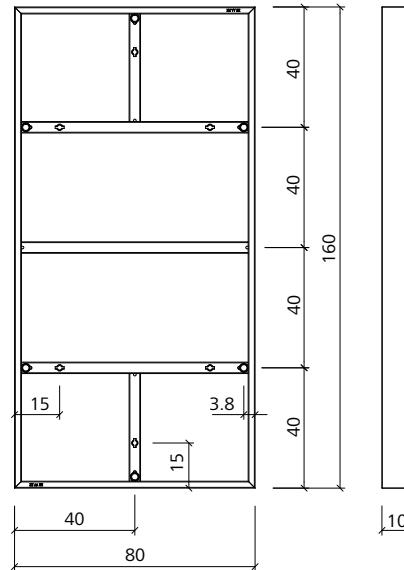
Wall formwork

Panel height 1.60 m

3 cross stiffeners, of which 2 are multi-function profiles (weld-in nuts with Dywidag thread). 2 tie holes per panel height (2 additional tie holes at the top and bottom for horizontal application for bottom slabs).

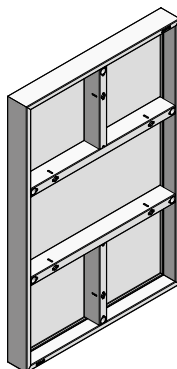


Ref.-No.	Description / Application	m ²	kg
21-705-21	EcoAs AL..... 160/80	1.28	47.60
21-705-46	EcoAs AL..... 160/55	0.88	37.90
21-705-51	EcoAs AL..... 160/50	0.80	36.00
21-705-56	EcoAs AL..... 160/45	0.72	34.00
21-705-61	EcoAs AL..... 160/40	0.64	27.50
21-705-76	EcoAs AL..... 160/25	0.40	21.70

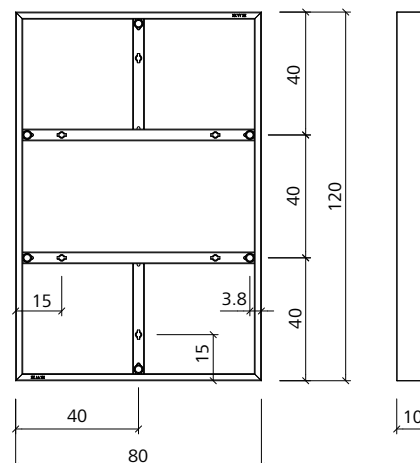


Panel height 1.20 m

2 cross stiffeners, both are multi-function profiles (weld-in nuts with Dywidag thread). 2 tie holes per panel height (2 additional tie holes at the top and bottom for horizontal application for bottom slabs).



Ref.-No.	Description / Application	m ²	kg
21-710-21	EcoAs AL..... 120/80	0.96	37.60
21-710-46	EcoAs AL..... 120/55	0.66	30.00
21-710-51	EcoAs AL..... 120/50	0.60	28.70
21-710-56	EcoAs AL..... 120/45	0.54	27.20
21-710-61	EcoAs AL..... 120/40	0.48	21.50
21-710-71	EcoAs AL..... 120/30	0.36	18.10
21-710-76	EcoAs AL..... 120/25	0.30	16.60



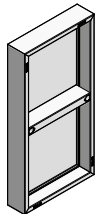
Important

Tie holes that are not used must always be closed with plastic plug D20.

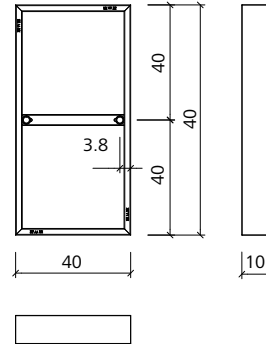
Wall formwork

Panel height 0.80 m

1 cross stiffeners is multi-function profiles (weld-in nuts with Dywidag thread). 2 tie holes per panel height .

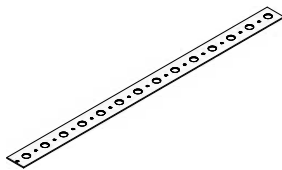


Ref.-No.	Description / Application	m ²	kg
21-715-61	EcoAs AL.....80/40	0.32	14.50

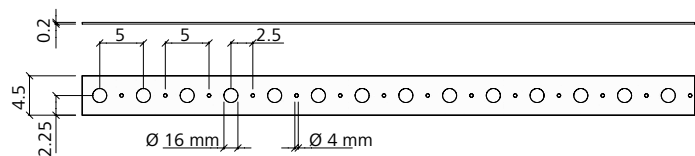


Foundation tape

Galvanized. Hole spacing 50 mm, hole Ø 16 mm, length 50 m. Adm. tractive force 10 kN. To be cut at hole center. Serves together with the appropriate tensioner as bottom anchoring when assembling panels in horizontal position.

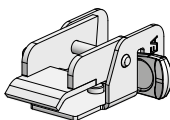


Ref.-No.	Description / Application	m ²	kg
29-307-50	Foundation tape 50 m.....		20.00

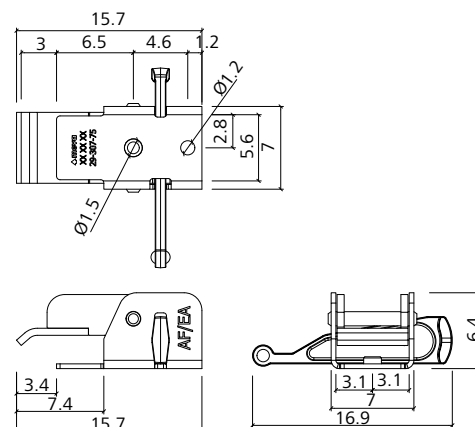


Tensioner EA for foundation tape

Galvanized. Connects the foundation tape to EcoAs or AluFix panels and serves as bottom anchoring when assembling panels in horizontal position. Two tensioners are required per anchoring position.



Ref.-No.	Description / Application	m ²	kg
29-307-75	Tensioner EA for foundation tape.....		1.26



Trolley for foundation tape

Not shown. Galvanized. Is used to transport and cut the foundation tape to length. Suitable for one roll. Pneumatic wheels.

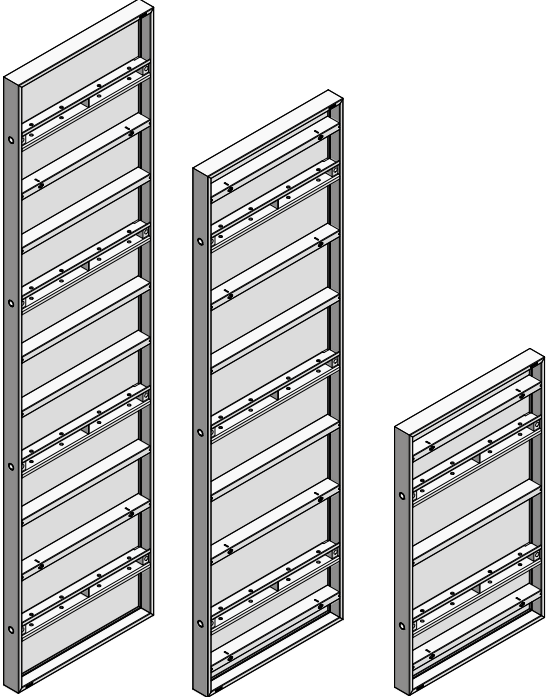
Ref.-No.	Description / Application	m ²	kg
29-307-55	Trolley for foundation tape.....		21.80

Wall formwork

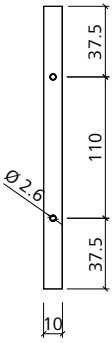
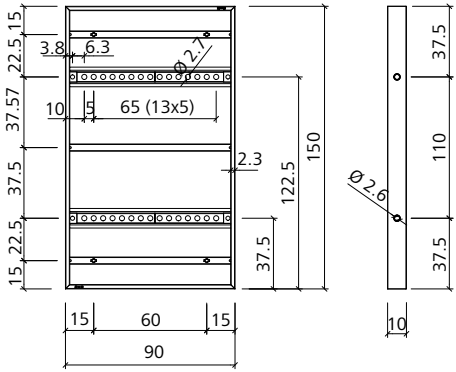
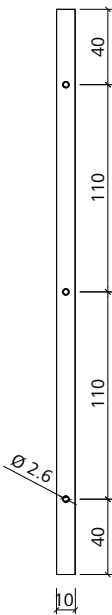
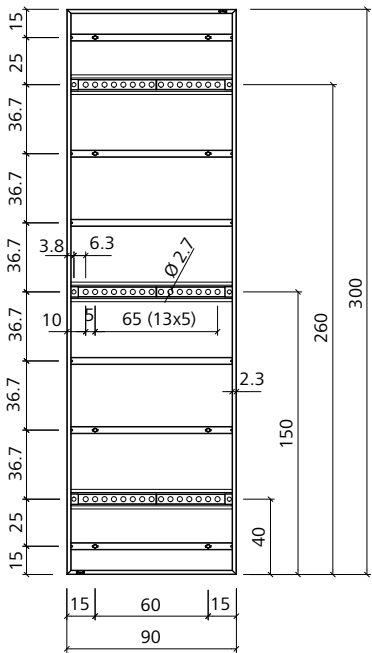
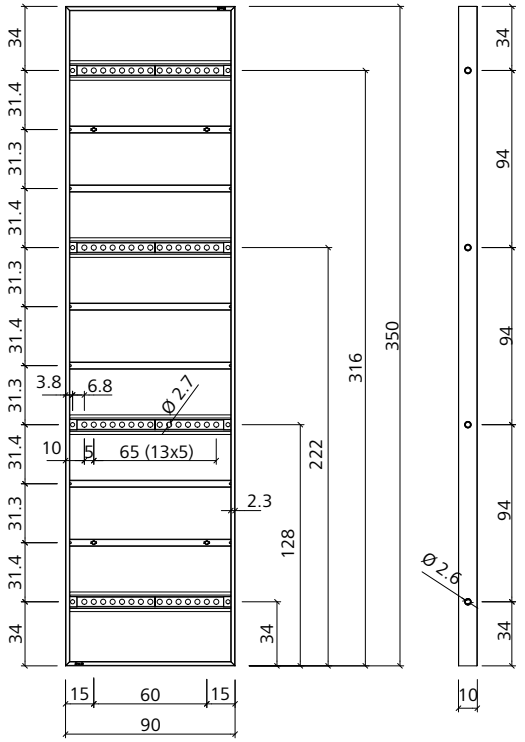
EcoAs

EcoAs AL Column panel

Steel, galvanized. Four tie holes per panel heights 350, three tie holes per panel heights 300 cm and two tie holes per panel heights 150 cm with unperforated alkus facing. Equipped with perforated profiles for tensioning screws M350/EA. Can be used for column formwork up to 75 cm (adjustment in 5 cm increments) and for pilasters, connections to existing walls, hinged corners, etc.



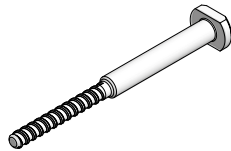
Ref.-No.	Description / Application	m ²	kg
21-704-86	EcoAs AL-CP.....350/90	3.15	133.10
21-704-91	EcoAs AL-CP.....300/90	2.70	115.10
21-704-96	EcoAs AL-CP.....150/90	1.35	65.80
21-704-85	EcoAs BP-CP.....350/90	3.15	129.60
21-704-90	EcoAs BP-CP.....300/90	2.70	112.10
21-704-95	EcoAs BP-CP.....150/90	1.35	64.30



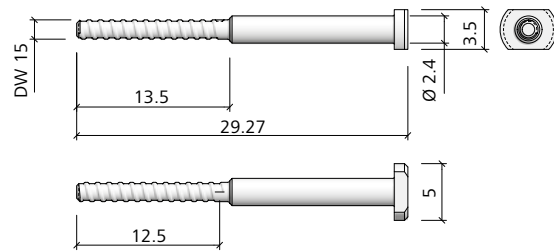
Wall formwork

Tension screw M 350/EA

Galvanized. Connects column panels. A flange nut 100 or an articulated flange nut 15/120 is also required.

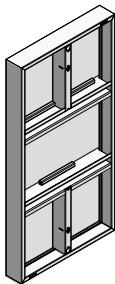


Ref.-No.	Description / Application	m ²	kg
29-402-98	Tension screw M350/EA	0.90	

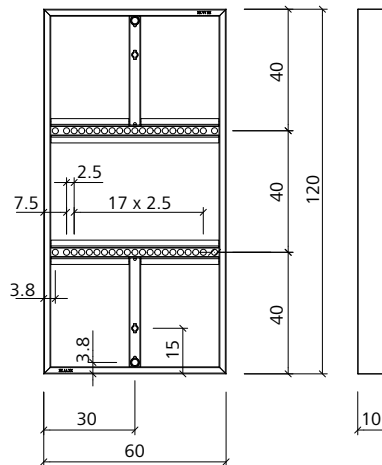


EcoAs Multipurpose panel

With perforated profiles to be used as column formwork or to concrete pilasters, stop ends, connections to existing walls, corner configurations, etc. Is used in connection with stop end fixture 23/40.



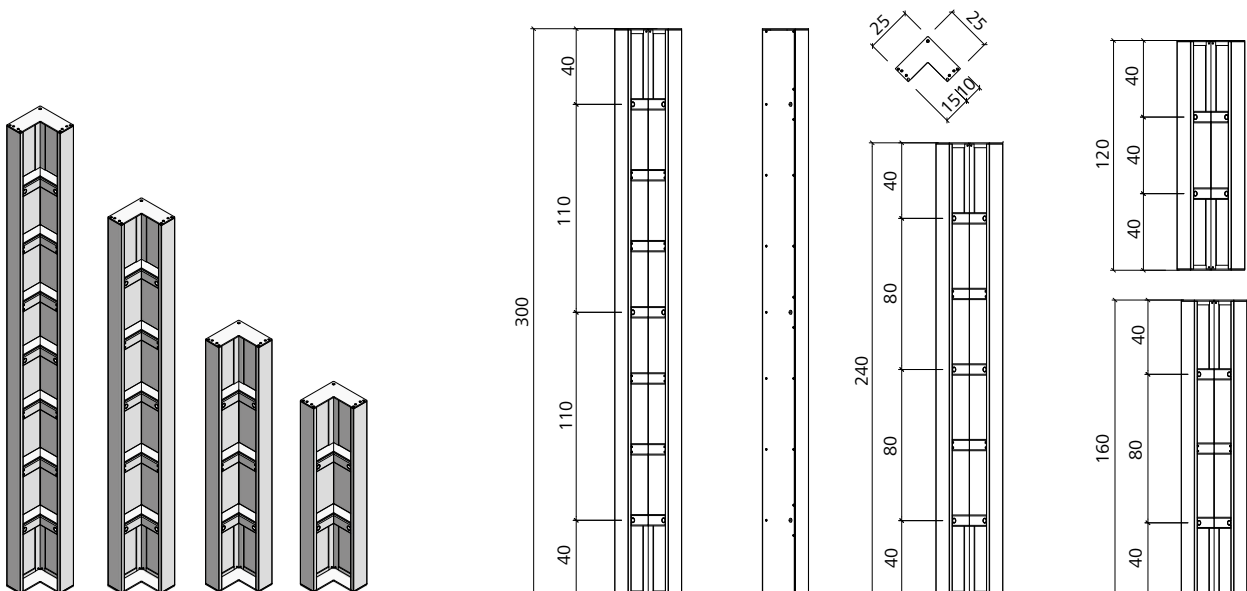
Ref.-No.	Description / Application	m ²	kg
21-720-51	EcoAs AL-MPP 120/60	0.72	34.19



EcoAs inside corner

Alu(minium) frame with high-quality annealed plastic coating. All-plastic facing. Aluminium frame with tie holes. For 90° corners, side length 25 cm.

Ref.-No.	Description / Application	m ²	kg
21-724-10	EcoAs AL-IC 300/25	1.50	30.50
21-724-20	EcoAs AL-IC 240/25	1.20	24.50
21-724-30	EcoAs AL-IC 160/25	0.80	16.80
21-724-40	EcoAs AL-IC 120/25	0.60	13.00

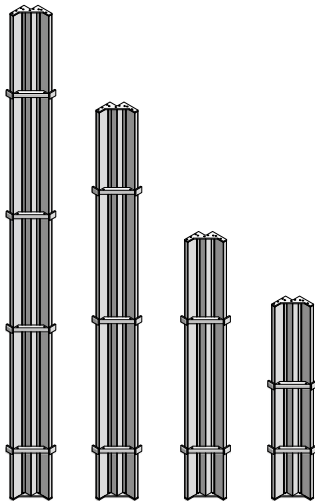


Wall formwork

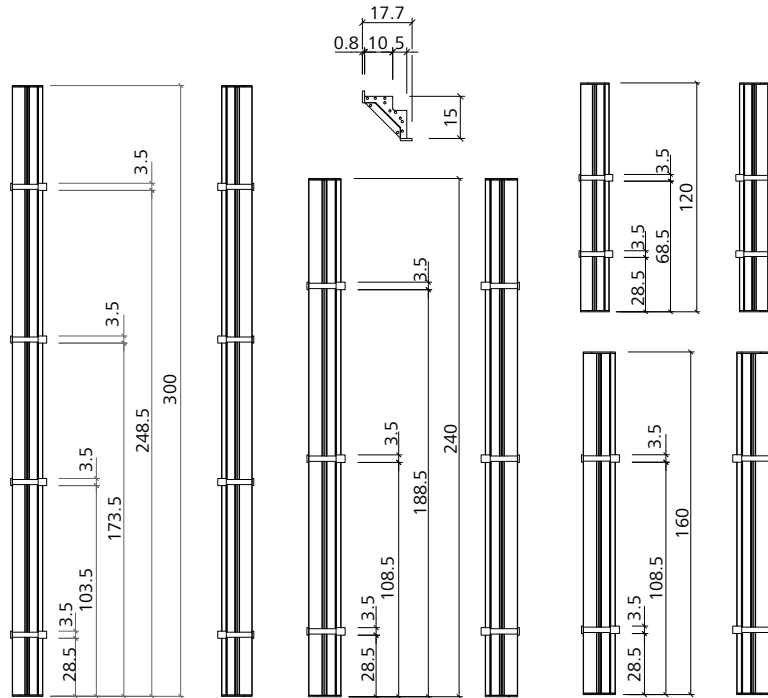
EcoAs

EcoAs outside corner

Aluminium with high-quality annealed plastic coating. Facing 5 cm wide on both sides, integrated chamfer strip. Provides together with EcoAs panels and EA assembly locks a fast and tight outside corner assembly for 90° angles.

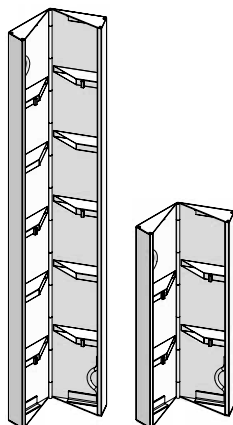


Ref.-No.	Description / Application	m ²	kg
21-725-75	EcoAs OC 300	0.30	15.80
21-725-85	EcoAs OC 240	0.24	12.60
21-725-90	EcoAs OC 160	0.16	8.50
21-725-95	EcoAs OC 120	0.12	6.50

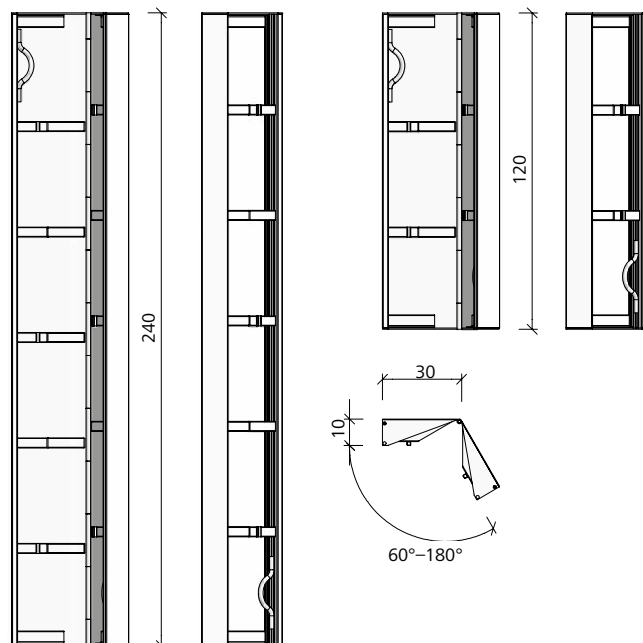


EcoAs hinged inside corner

Steel construction with steel sheeting, primed and cavity-sealed. Side length 30 cm. Adjustable angle 60° to 180°.



Ref.-No.	Description / Application	m ²	kg
21-726-30	EcoAs HIC 240/30	1.44	74.30
21-726-40	EcoAs HIC 120/30	0.72	38.20

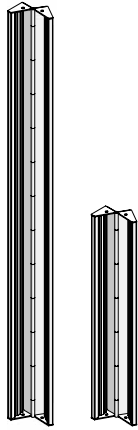


Wall formwork

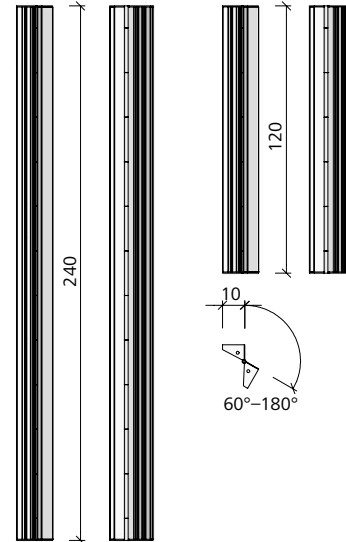
EcoAs

EcoAs hinged outside corner

Steel construction with steel sheeting, primed and cavity-sealed. Side length 7.5 cm. Adjustable angle 60° to 180°.

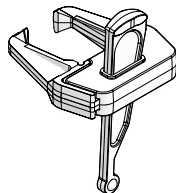


Ref.-No.	Description / Application	m ²	kg
21-726-50	EcoAs HOC.....240	0.36	39.70
21-726-60	EcoAs HOC.....120	0.18	20.20

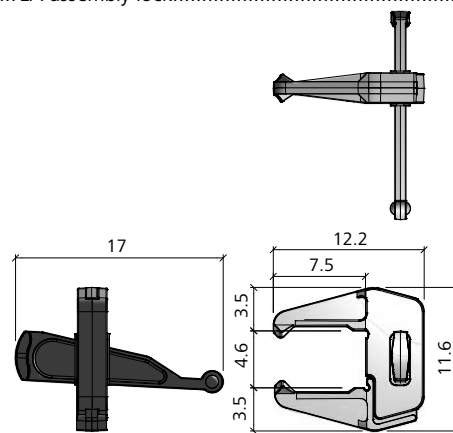


EA assembly lock

Galvanized. Tightly connects and aligns EA panels.
Clamping length 4.6 cm.

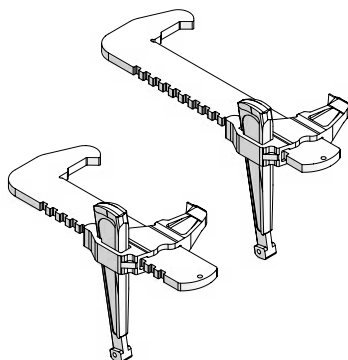


Ref.-No.	Description / Application	m ²	kg
29-205-50	EA-assembly lock.....		1.50

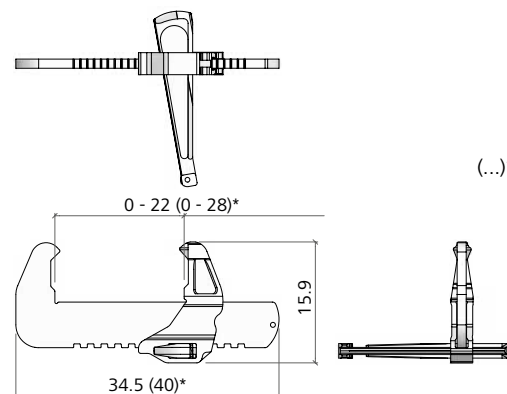


Uni-assembly lock

Galvanized. For stepless compensation.
Clamping length 22 cm or 28 cm.



Ref.-No.	Description / Application	m ²	kg
29-400-85	Uni-assembly lock 22		3.60
29-400-90	Uni-assembly lock 28		3.90

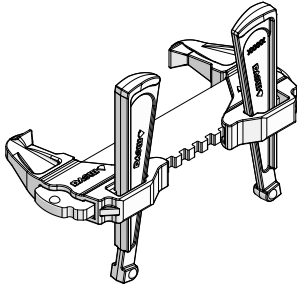


(...)* = 29-400-90

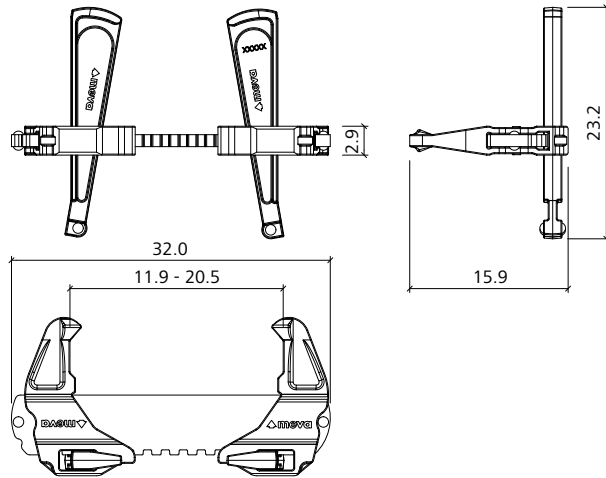
Wall formwork

RS-assembly lock

Galvanized, For stepless length compensation. Clamping length is 11.9 to 20.5 cm for stepless compensation.

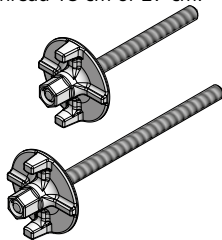


Ref.-No.	Description / Application	m ²	kg
23-807-70 RS-assembly lock.....		4.70

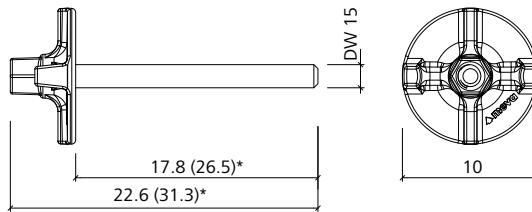


Flange screw

Galvanized. DW thread Ø 15 mm. Is used to attach accessories, e.g. alignment rails, brace frames, push-pull props, etc. Length of thread 18 cm or 27 cm.



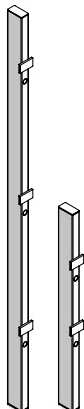
Ref.-No.	Description / Application	m ²	kg
29-401-10 Flange screw 18.....		1.02
29-401-12 Flange screw 28.....		1.28



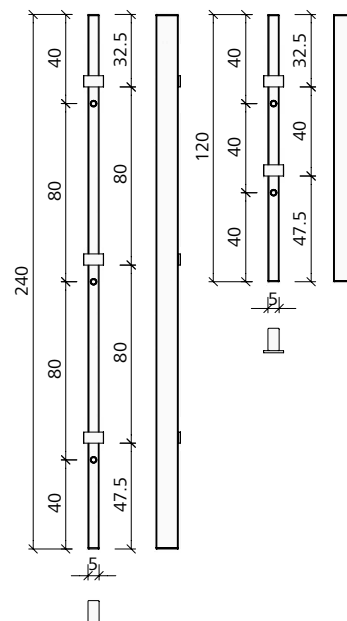
(...)* = 29-401-12

EA steel filler

Completely made of steel, primed and cavity-sealed, with tie holes. For length adjustment of 5 cm, particularly in corners. 2 or 3 Uni-assembly locks are required for each filler.



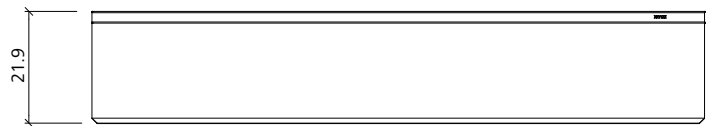
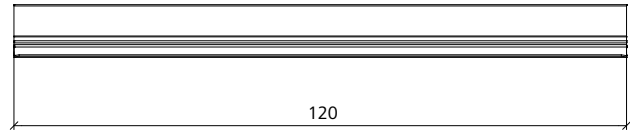
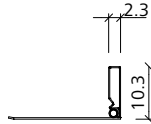
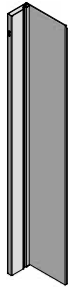
Ref.-No.	Description / Application	m ²	kg
21-726-00 EA-steel filler 240/5.....	0.12	13.00
21-726-10 EA-steel filler 120/5.....	0.06	6.50



Wall formwork

EA compensation plate

Steel construction with steel sheeting, primed and cavity-sealed. Is used to compensate gaps of 6 to 20 cm and attached to panels with 2 EA assembly locks. Alignment rails must be used to bridge and align the panels with the compensation plate.



Ref.-No.	Description / Application	m ²	kg
21-726-20	EA-compensation plate 120/20	0.24	11.80

Dismantling auxiliary 120

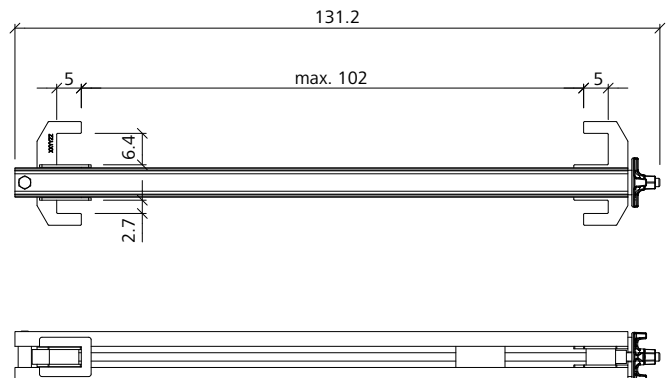
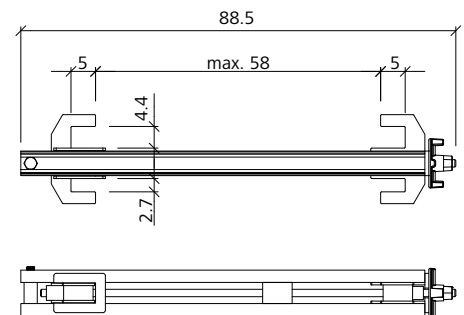
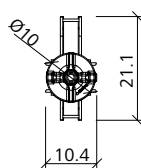
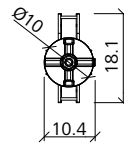
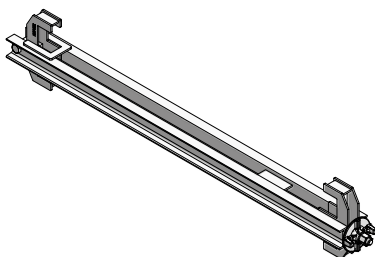
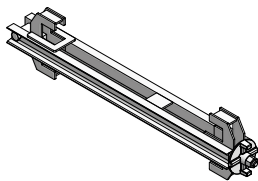
Diagonally divided timber filler, 10 cm wide, 120 cm high. Permits easy stripping in restricted areas such as shafts and staircases. Two Uni-assembly locks are required per dismantling auxiliary. Alignment rails must be used for reinforcement. Delivery and weight by pairs.



Ref.-No.	Description / Application	m ²	kg
29-306-20	Dismantling auxiliary 120		3.60

Stop end bracket

Galvanized. Is used to form stop ends. Stop end bracket 23/40 for wall thickness up to 35. Stop end bracket 60/23 for wall thickness up to 75 cm.

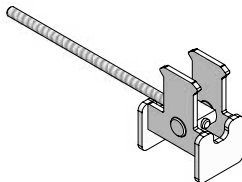


Ref.-No.	Description / Application	m ²	kg
29-105-45	Stop end bracket 23/40		13.40
29-105-60	Stop end bracket 2.5' - 60/23		19.50

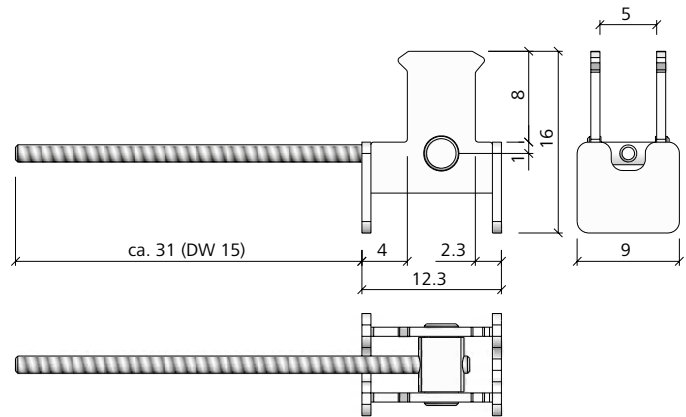
Wall formwork

Stop end fixture 23/40

Yellow chromated. Is used together with the EcoAs or StarTec multi-purpose panel to form outside corners and abutments. Is suited for the frame profiles of EcoAs and AluFix (23 mm) and AluStar/StarTec (40 mm). A flange nut 100 or an articulated flange nut 15/120 is also required.



Ref.-No.	Description / Application	m ²	kg
79-402-85 Stop end fixture 23/40 (yellow)		3.00



Plug D20

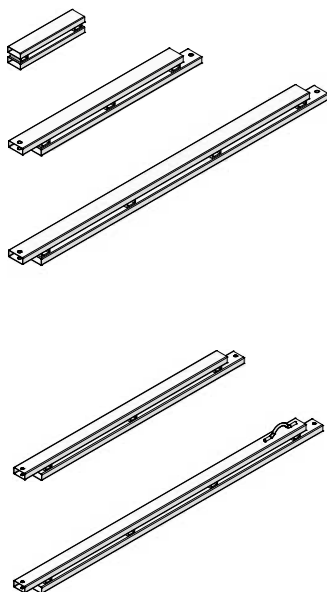
Is used to close unused tie holes (AluFix, EcoAs, AluStar and StarTec).



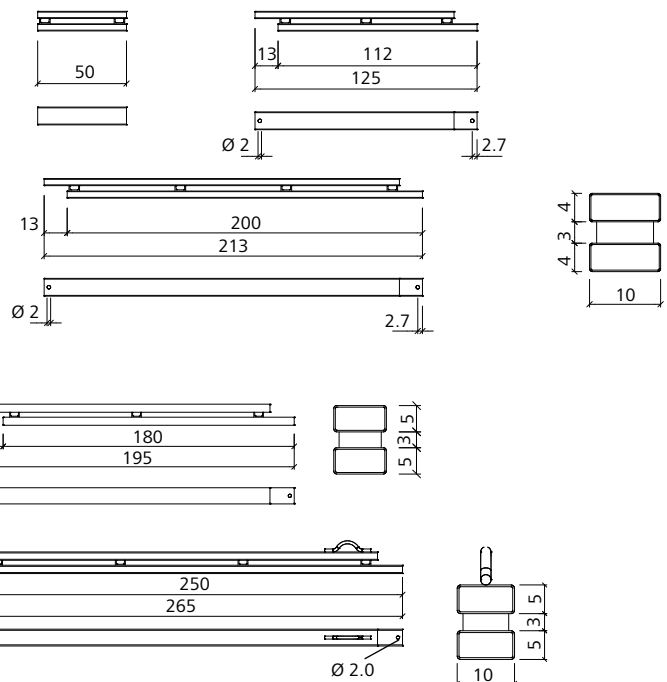
Ref.-No.	Description / Application	m ²	kg
29-902-63 Plug D20 red		0.01
29-902-62 Plug D20 without imprint		0.01

Alignment rail

Galvanized. Is used to brace panel joints for crane ganging, bridge problem areas and brace compensation areas. Is attached to the formwork with flange screws.



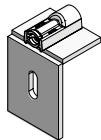
Ref.-No.	Description / Application	m ²	kg
29-201-73 AS-alignment rail 50, galv.		5.20
29-201-75 AS-alignment rail 125, galv.		10.50
29-201-80 AS-alignment rail 200, galv.		19.00
29-400-92 M-alignment rail 180, galv.		24.80
29-402-50 M-alignment rail 250, galv.		34.50



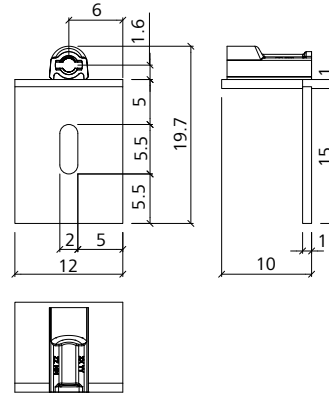
Wall formwork

Support angle for walkway brackets

Galvanized. Is used to support a walkway bracket if the DW-nut on the multi-function bracket profile is covered by an alignment rail. In this case the mounting bracket is fixed to the panel through the alignment rail by a separate flange screw.



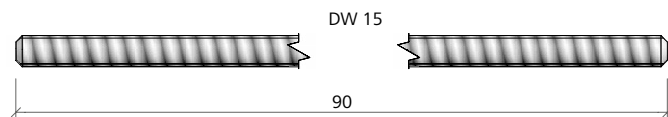
Ref.-No.	Description / Application	m ²	kg
29-106-95	Support angle for walkway brackets.....	2.70	



Tie rod DW 15/90

Uncoated, not weldable. DW thread Ø 15 mm. Is used to tie panels of double-sided formwork. Adm. load capacity 90 kN (DIN 18216).

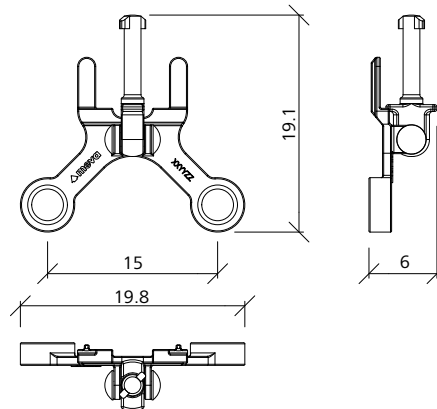
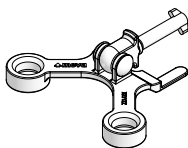
Ref.-No.	Description / Application	m ²	kg
29-900-80	Tie rod DW 15/90.....	1.25	



Tie rod fixture

Galvanized. To hold DW tie rods with articulated flange nut, XT tie rods or XT taper ties. Can be used with horizontal or vertical MEVA wall formwork panels.

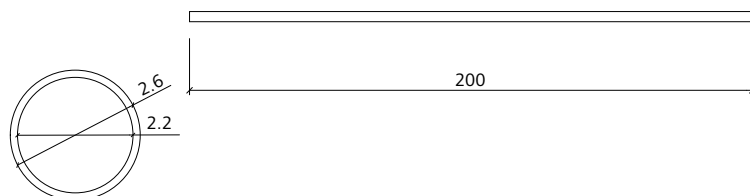
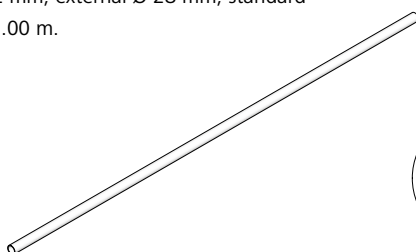
Ref.-No.	Description / Application	m ²	kg
29-927-05	Tie rod fixture Ø35.....	1.20	



Plastic tube

Plastic spacer tube for tie holes. Two cones are also required per tie hole. D22/200: internal Ø 22 mm, external Ø 28 mm, standard length 2.00 m.

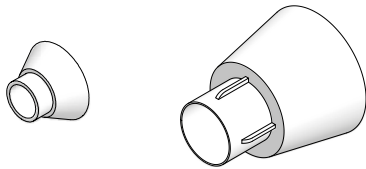
Ref.-No.	Description / Application	m ²	kg
29-902-30	Plastic tube D22/200.....	0.35	



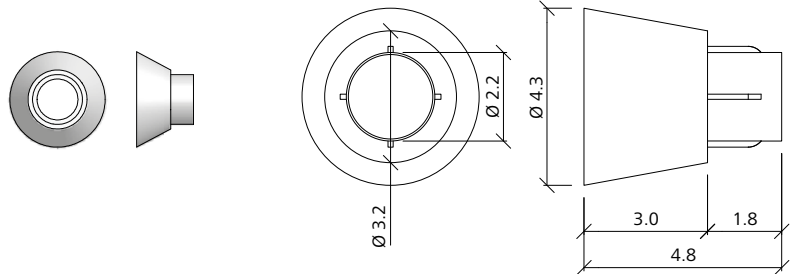
Wall formwork

Cone for plastic tube

Available with 10 mm or 30 mm covering.



Ref.-No.	Description / Application	m ²	kg
29-902-40	Cone for plastic tube D22/10 (10 mm covering)	0.01	
29-902-50	Cone for plastic tube D22/30 (30 mm covering)	0.01	



Plug

Is used to close tie holes in the wall when plastic tubes D22 are applied. Two plugs are required per tie hole.

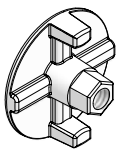


Ref.-No.	Description / Application	m ²	kg
29-902-70	Plug D22	0.01	

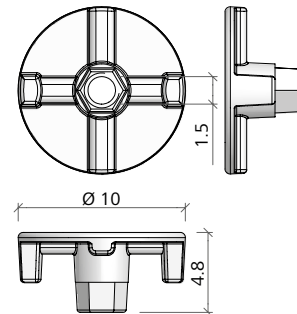


Flange nut 100

Forged, galvanized. For DW tie rods with 15 mm Ø. Plate Ø 100 mm, SW 27. Admissible load capacity 90 kN (DIN 18216).

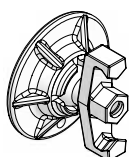


Ref.-No.	Description / Application	m ²	kg
29-900-20	Flange nut 100 (SW 27, forged)	0.70	

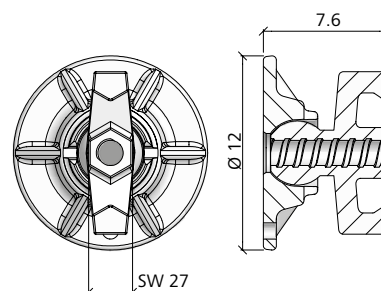


Articulated flange nut 15/120

Forged, galvanized. DIN 18216. DW thread Ø 15 mm, plate Ø 120 mm, max. inclination 10°, SW 27. Max. load capacity 90 kN. Reduces wear of panel coating.



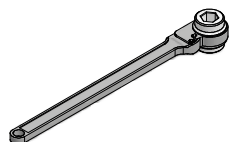
Ref.-No.	Description / Application	m ²	kg
29-900-10	Articulated flange nut 15/120 (SW 27)	1.81	



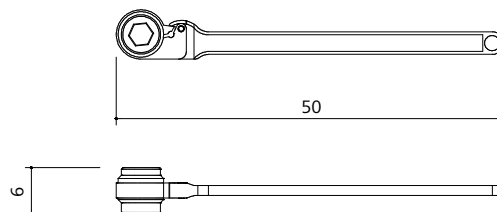
Wall formwork

Spanner SW 27

Inset yellow chromated. Spanner width (SW) 27 mm. Is used to tighten and loosen flange nut 100, articulated flange nut 15/120 and flange screw.

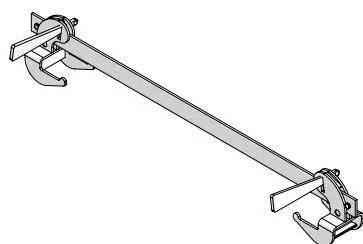


Ref.-No.	Description / Application	m ²	kg
29-800-10	Spanner SW 27		1.80

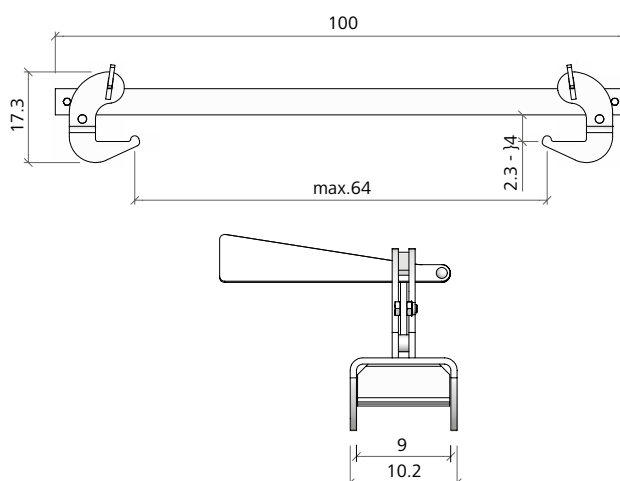


Push-pull strut

Galvanized, torsion-proof. Is attached above a panel joint and replaces top tie of horizontal panels for a wall or slab thickness up to 64 cm (AluFix and EcoAs) and 60 cm (StarTec and AluStar).



Ref.-No.	Description / Application	m ²	kg
79-105-70	Push-pull strut		6.60

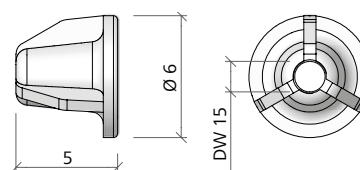


Drive nut 60

Galvanized. DW thread \varnothing 15 mm, plate \varnothing 60 mm. Adm. load capacity 90 kN (DIN 18216). Is used to tie the formwork to the ground or to a wall connection.

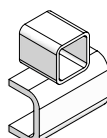


Ref.-No.	Description / Application	m ²	kg
29-900-23	Drive nut 60		0.50

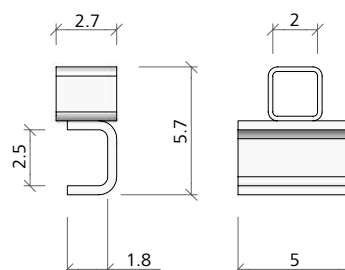


Tie claw 23

Galvanized. Permits tying (with tie rod DW 15 and flange nut 100) directly above or beside EcoAs and AluFix panels.



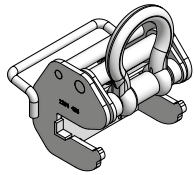
Ref.-No.	Description / Application	m ²	kg
29-901-44	Tie claw 23		0.17



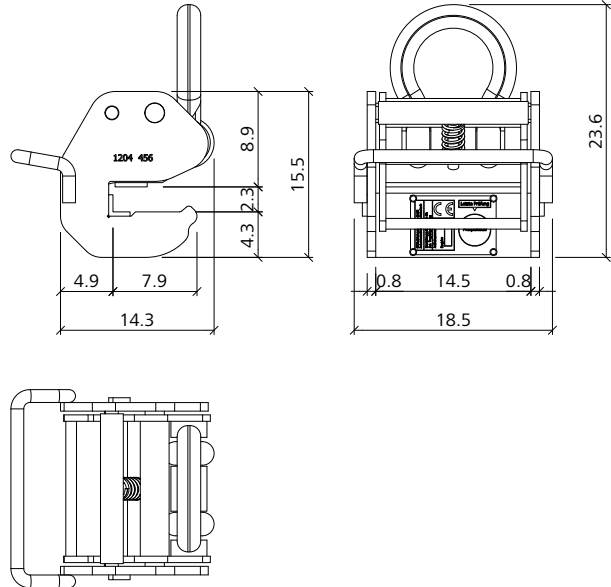
Wall formwork

EA/AF crane hook

Coated. Is used to move and crane-gang AluFix and EcoAs panels. Self-locking. Load capacity 6 kN (600 kg). Always two crane hooks required per gang. Refer to the crane hook Operating Instructions for application and safety test.



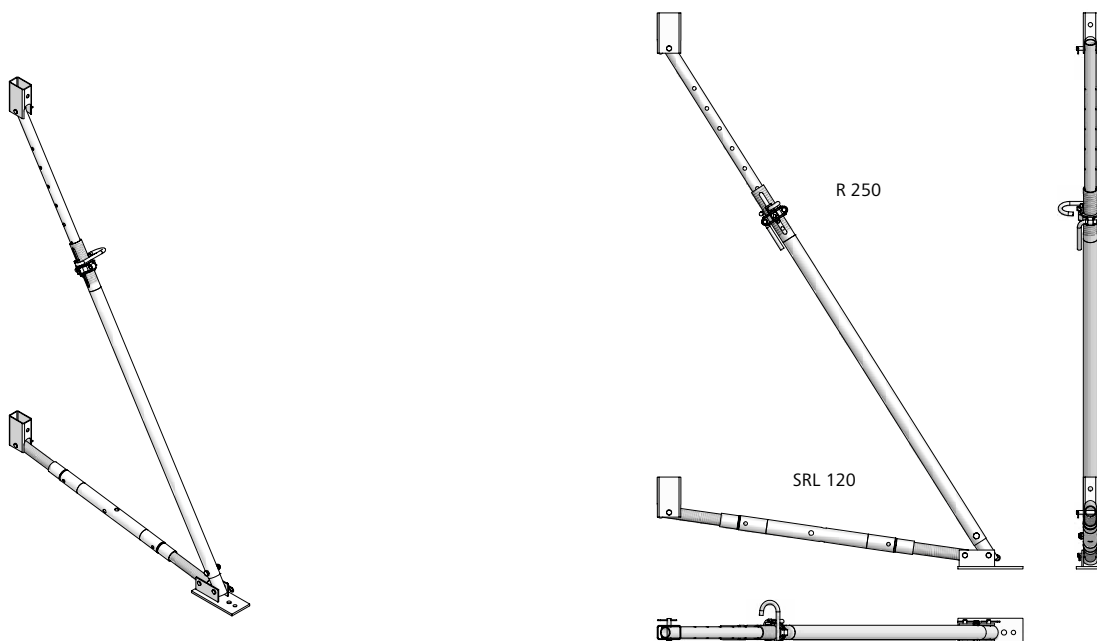
Ref.-No.	Description / Application	m ²	kg
29-103-05	EA/AF crane hook		5.89



Brace frame 250

Galvanized. Available with formwork-prop connector. Is used to align and brace the formwork. Consists of a push-pull prop R 250 (190-320 cm), a brace SRL 120 (90-150 cm) and a double-jointed footplate. The formwork-prop connectors are attached to the formwork with flange screws 18.

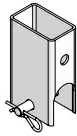
Ref.-No.	Description / Application	m ²	kg
29-109-20	Brace frame 250 with formwork-prop connector		31.50



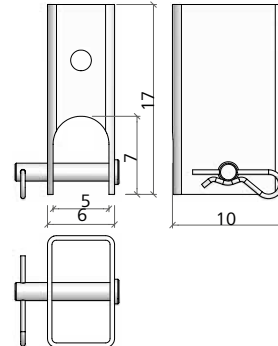
Wall formwork

Formwork-prop connector

Galvanized. Delivery includes head bolt 16/90 and cotter pin 4. Is used to connect braces, brace frames and push-pull props (max. Ø 48 mm) to the multi-function profile with a flange screw 18.



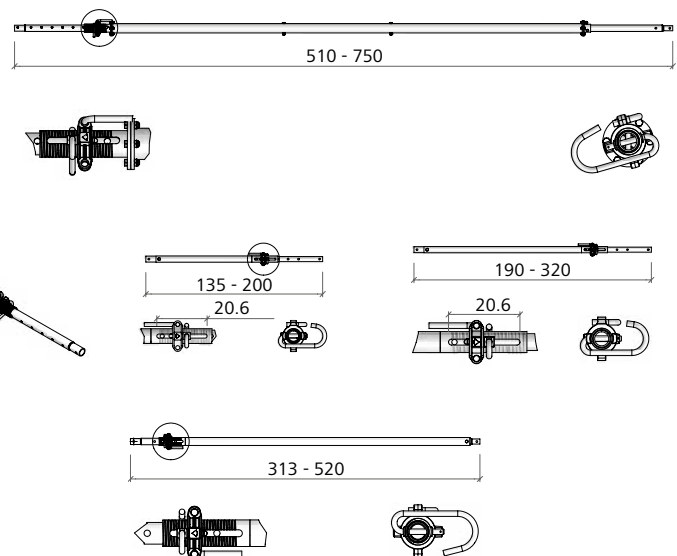
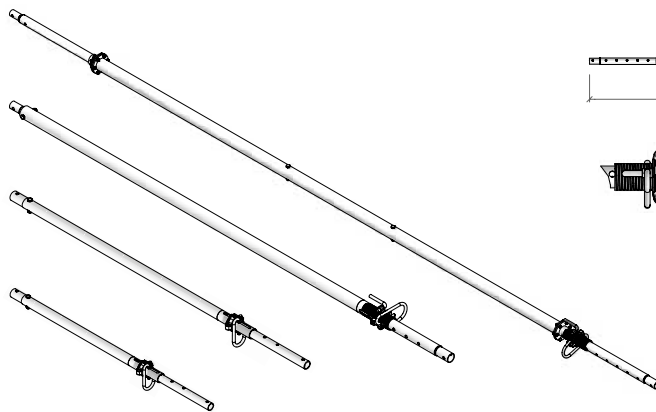
Ref.-No.	Description / Application	m ²	kg
29-804-85	Formwork-prop connector		1.65



Push-pull prop R

Galvanized. Guarantee tensile and compression strength. Align and brace wall formwork. Length of thread 20.6 cm. Foot plates and formwork-prop-connectors to be ordered separately.

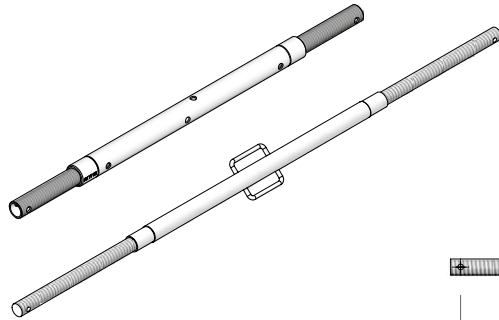
Ref.-No.	Description / Application	m ²	kg
29-109-40	Push-pull prop R 160 (135-200)		12.60
29-109-60	Push-pull prop R 250 (190-320)		17.20
29-109-80	Push-pull prop R 460 (340-520)		34.00
29-109-85	Push-pull prop R 630 (510-760)		57.00



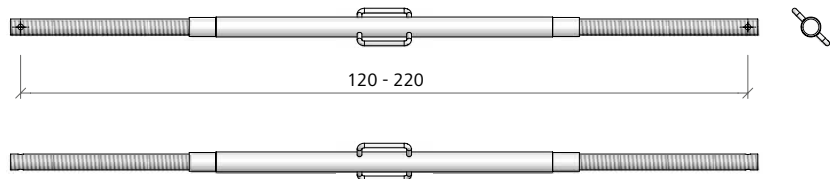
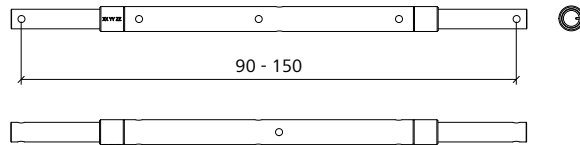
Wall formwork

Braces SRL

Galvanized. Guarantee tensile and compression strength. With right-hand and left-hand spindle and revolving centre part. Align and brace wall formwork. Foot plates and formwork-prop-connectors to be ordered separately.

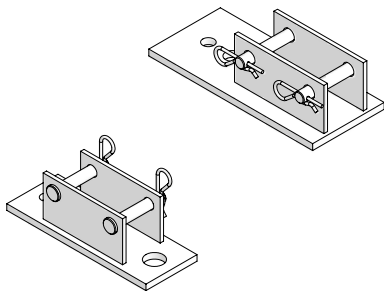


Ref.-No.	Description / Application	m ²	kg
29-108-80	Brace SRL 120 (90-150)	8.79	
29-108-90	Brace SRL 170 (120-220)	11.50	

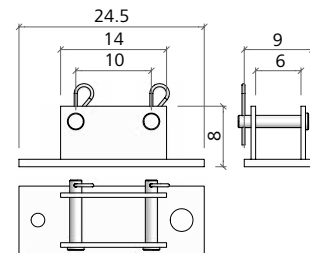
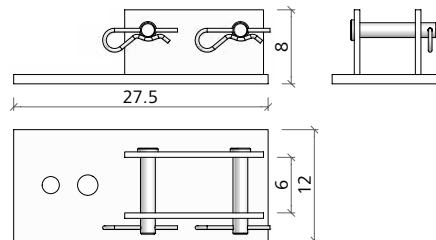


Foot plate

Galvanized. With head bolt 16/90 and cotter pin 4. Serves as foot plate for brace frames 250 and as connector for braces and push-pull props up to Ø 57 mm.



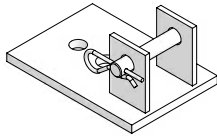
Ref.-No.	Description / Application	m ²	kg
29-402-32	Double-jointed foot plate (prop diam. up to 57 mm)	4.00	
79-427-50	Foot plate 60 (prop diam. up to 57 mm)	3.00	



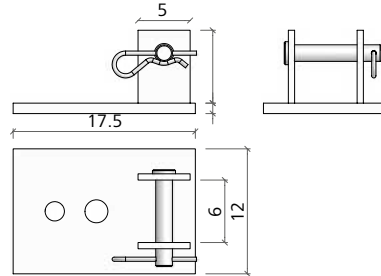
Wall formwork

Articulated foot plate

Galvanized. With head bolt 16/90 and cotter pin 4. For push-pull props and braces of up to \varnothing 57 mm.



Ref.-No.	Description / Application	m ²	kg
29-802-48	Articulated foot plate (prop diam. up to 57 mm)	2.30	

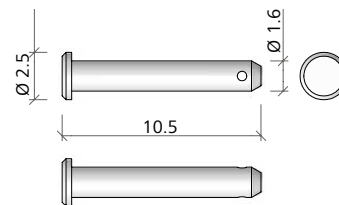


Head bolt 16/90

Galvanized. Is used to attach push-pull props and braces to foot plates and formwork-prop connectors.

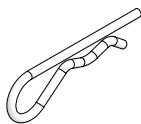


Ref.-No.	Description / Application	m ²	kg
42-413-50	Head bolt 16/90, galv.	0.17	

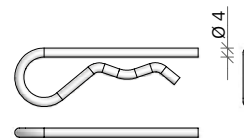


Cotter pin 4

Galvanized. Locks the head bolt.

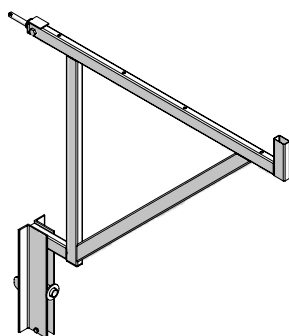


Ref.-No.	Description / Application	m ²	kg
62-010-04	Cotter pin 4	0.02	

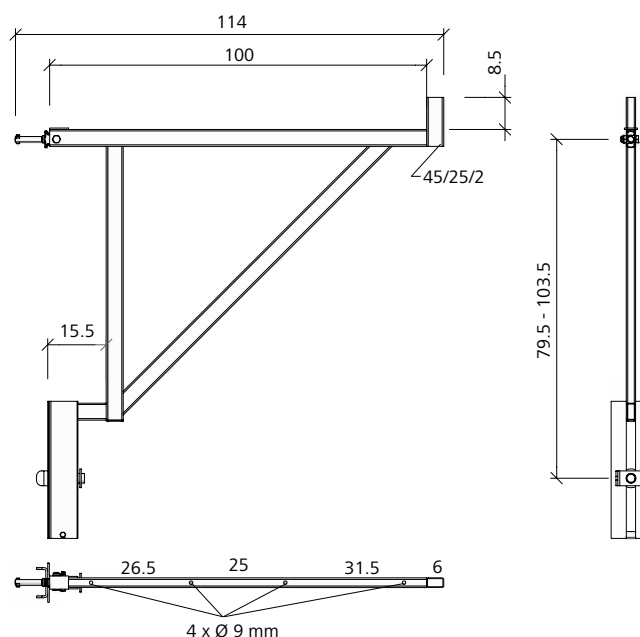


Walkway bracket

Galvanized, yellow, pluggable. Is used as working and safety scaffold. Is attached to the multi-function profile and secured to the multi-function profile below with a flange screw 18. The planking can be mounted to the brackets. Working width approx. 90 cm. MEVA Guardrailing post is also required. Bracket spacing depends on type of planking (DIN 4420).



Ref.-No.	Description / Application	m ²	kg
29-106-00	Walkway bracket 90 (yellow), galv.	10.30	

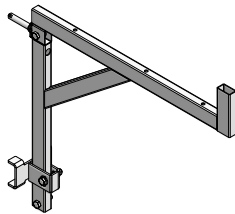


Wall formwork

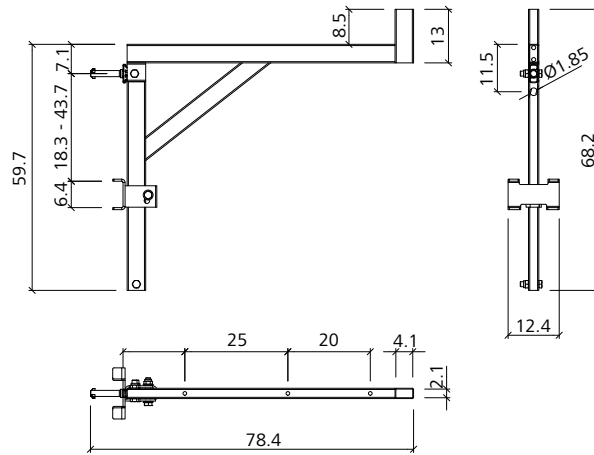
Walkway bracket 65

Galvanized, pluggable. Adapted in particular to AluFix and EcoAs.

Is used as working and safety scaffold. Is plugged into the multi-function profile while the sliding part rests on the cross stiffener – no flange screw needed. The planking can be mounted to the brackets. Working width approx. 65 cm. A MEVA guardrailing post is required in addition. Bracket spacing depends on type of planking (DIN 4420).



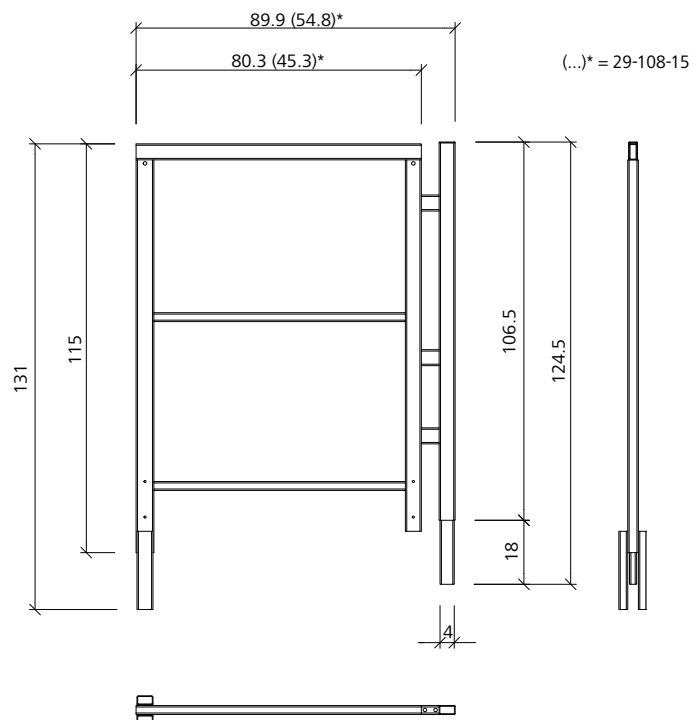
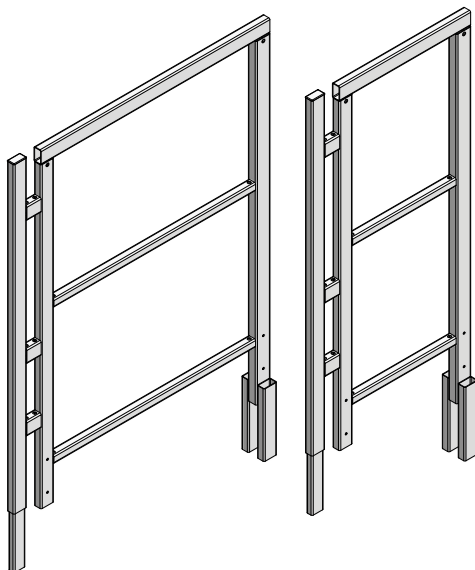
Ref.-No.	Description / Application	m ²	kg
29-106-15.....	Walkway bracket 65.....		4.80



Side railing

Galvanized. Is plugged into the walkway bracket.

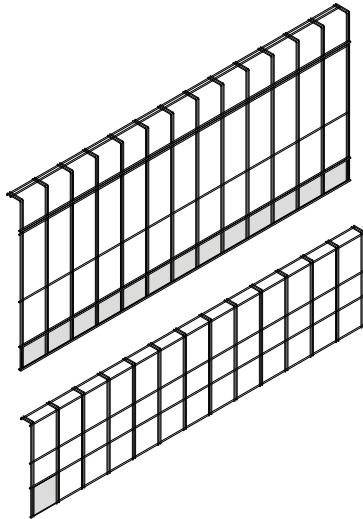
Ref.-No.	Description / Application	m ²	kg
29-108-20	Side railing 90/100, galv.....	12.30	
29-108-15.....	Side railing 65/100, galv.....	10.50	



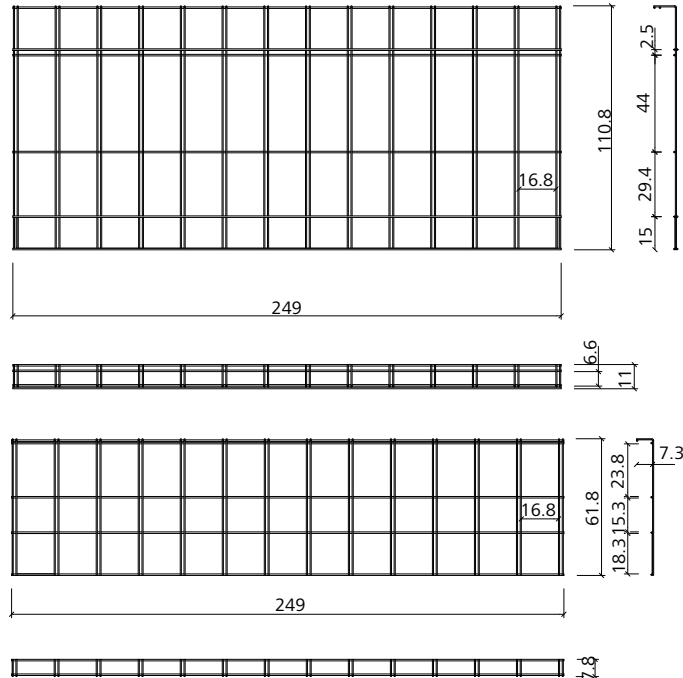
Wall formwork

Safety mesh

Painted steel. Robust steel mesh with reinforced edges and closed steel sheet to prevent small items from falling down. The mesh replaces railings, toe board and net in one single part. DIN EN 13374 Class A.

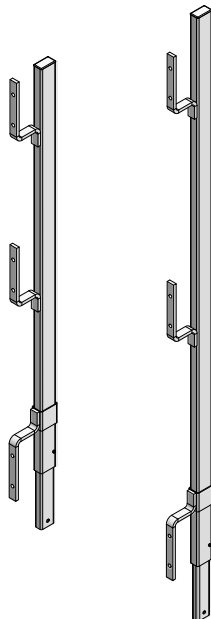


Ref.-No.	Description / Application	m ²	kg
29-920-00 Safety mesh 1100/2490	15.00	
29-920-05 Safety mesh 600/2490	9.80	

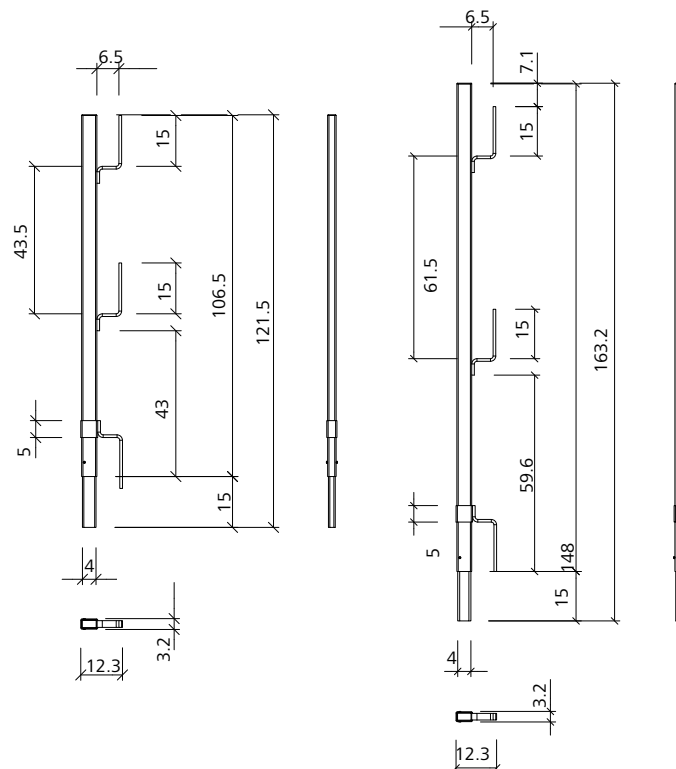


Guardrailing post

Galvanized. Is plugged into the walkway bracket.



Ref.-No.	Description / Application	m ²	kg
29-106-75 Guardrailing post 100.....	3.70	
29-106-85 Guardrailing post 140.....	4.70	



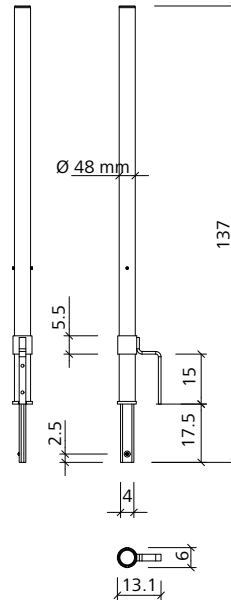
Wall formwork

Guardrailing post 48

Galvanized. With manifold to be plugged into the walkway bracket and with 48 mm Ø tube to attach scaffold couplers.

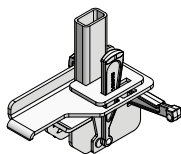


Ref.-No.	Description / Application	m ²	kg
29-106-80 Guardrailing post 48/120 (UK).....		5.50

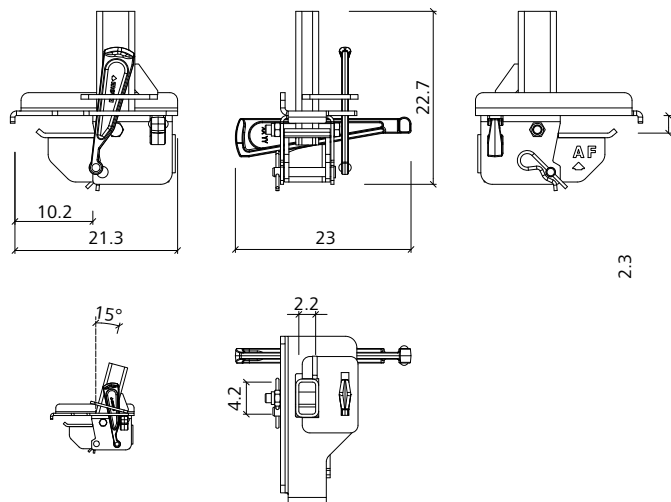


Tilting bracket 23

Galvanised. Used to attach MEVA guardrailing posts to create a fall protection system. It can be set up vertically to facilitate the installation of safety meshes or railing boards or inclined by 15° to create a larger working area. Secured with a wedge to the frame profile of 23 mm.

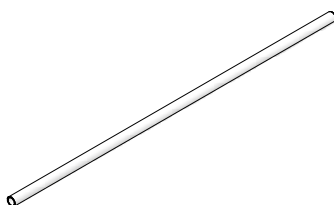


Ref.-No.	Description / Application	m ²	kg
29-920-84 Tilting bracket 23		4.90



Scaffold tube

Galvanized. Is used as handrail in combination with guardrailing post 48.



Ref.-No.	Description / Application	m ²	kg
29-412-23 Scaffold tube 48/200.....		9.40
29-412-26 Scaffold tube 48/300.....		14.10
29-412-27 Scaffold tube 48/400.....		18.80
29-412-25 Scaffold tube 48/500.....		23.50
29-412-28 Scaffold tube 48/600.....		28.20

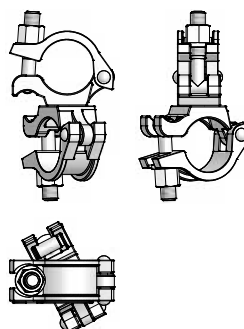
Wall formwork

Swivel-joint coupler 48/48

Galvanized. Connects 2 scaffold tubes with 48.3 mm Ø at any angle.

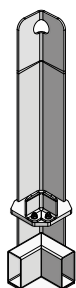


Ref.-No.	Description / Application	m ²	kg
29-412-52	Swivel-joint coupler 48/48	1.20	

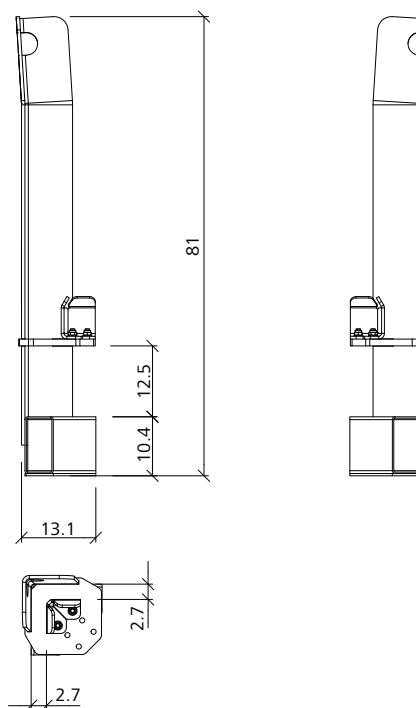


Stacking angle 60/40/23

Steel, galvanized. Used to stack and transport two to five wall formwork panels of the same size with frame profile widths of 60 mm, 40 mm or 23 mm. Four stacking angles 60/40/23 are required for each panel stack. The permissible load capacity per stacking angle is 15 kN (1.5 t). Refer to the stacking angle Operating Instructions for application and safety test.

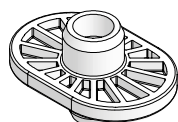


Ref.-No.	Description / Application	m ²	kg
29-305-45	Stacking angle 60/40/23	9.60	



Safety plug stacks

Plastic, black. Secures stacked AluFix, EcoAs, AluStar and StarTec panels.



Ref.-No.	Description / Application	m ²	kg
40-131-10	Safety plug AS/ST stacks, black	0.04	

Wall formwork

Notes

A large grid of small dots for taking notes, consisting of 20 columns and 30 rows.

Wall formwork

Notes

A large grid of small dots for taking notes, consisting of approximately 30 columns and 40 rows.



MEVA Schalungs-Systeme GmbH

Industriestraße 5 Tel. +49 7456 692-01
72221 Haiterbach Fax +49 7456 692-66
Germany info@meva.net

www.meva.net